

CONSULTATION

ON THE NEW ADDITIONAL SECONDARY EDUCATION PROVISION IN THE MUSSELBURGH AREA

have your say



EAST LoTHIAN COUNCIL
DEPARTMENT OF RESOURCES AND PEOPLE SERVICES

THIS IS A PROPOSAL DOCUMENT

The Council has approved the following proposal for consultation:

It is proposed to establish a new secondary school in Wallyford from 2020, or as soon as possible thereafter, to provide additional secondary education provision within the Musselburgh cluster area.

Proposal:

That subject to the outcome of this consultation exercise:

- A new secondary school will be established in Wallyford from 2020, or as soon as possible thereafter, to provide additional secondary education provision within the Musselburgh cluster area.
- The site of the new secondary school will be in the area of Wallyford.
- The catchment area of the new secondary school will be created from the present Pinkie St Peter's Primary School and proposed revised Wallyford Primary School catchment areas.
- S1-S2 young people who reside within the catchment areas of Wallyford Primary School and Pinkie St Peter's Primary School will attend a new secondary school in Wallyford from 2020, or as soon as possible thereafter.
- The children and young people attending Wallyford Primary School and Pinkie St Peter's Primary School will transfer to the new secondary school at the end of P7 with effect from 2020 onwards, or as soon as possible thereafter.

This proposal also has implications for:

- Musselburgh Grammar School
- Sanderson's Wynd Primary School
- Ross High School

East Lothian Council want to hear your views on the proposal to establish a new second, secondary school for the Musselburgh area and proposed changes to the catchment areas of **Pinkie St Peter's Primary School, Wallyford Primary School and Musselburgh Grammar School**. Within this Proposal Document you will find information about the proposals, the reasons behind them, their likely impact and how you can tell us what you think about them.

There is also a short questionnaire at the end of this document that we are inviting as many people affected as possible to complete and return. Your opinions are important given the change to school provision being proposed in the Musselburgh area.

East Lothian Council would like to thank you in advance for your help and co-operation as your views are extremely important to us.

We would like to be as open as possible with the results of this consultation so please note that your response will be anonymised and made public at the end of the consultation period. You may wish to ensure that you do not give any identifying details in your response. If you don't wish your response to be made public, you can specify this in the questionnaire.

DISTRIBUTION

A copy of this document, and an information leaflet, are available on the East Lothian Council Consultation Hub: www.eastlothianconsultations.co.uk/education/musselburgh-school

An information leaflet will be provided to:

- All Musselburgh schools,
- Olivebank Children & Family Centre
- Brunton Hall, Musselburgh,
- Musselburgh Library,
- Wallyford Library,
- Musselburgh East Community Learning Centre,
- Wallyford Community Centre,
- Doctor surgery,
- First Step Nursery,
- Fisherrow Community Nursery,
- Honest Toun Nursery,
- Loretto Private Nursery,
- Musselburgh Private Nursery,
- Musselburgh Area Partnership, and
- John Muir House, Haddington.

Paper copies of the consultation document, including the questionnaire, will also be available at:

- All Musselburgh schools,
- Brunton Hall, Musselburgh
- Musselburgh Library,
- Wallyford Library,
- Wallyford Community Centre,
- Musselburgh East Community Learning Centre and
- John Muir House, Haddington.

Versions of this document can be supplied in Braille, large print, audiotape or in your own language. Please phone the Public Information Officer on 01620 827199.

To be taken into consideration, responses to the consultation must be received by **Wednesday 15th June 2016**. These can be made electronically through the online consultation questionnaire on East Lothian Council's Consultation Hub at www.eastlothianconsultations.co.uk/education/musselburgh-school

Written responses can be returned to Musselburgh Consultation, East Lothian Council, Resources and People Services, John Muir House, Haddington, EH41 3HA.

You can also deposit your written response in one of the collection boxes at the following locations These collection boxes will be in place from **Friday 6th May 2016**:

- Campie, Loretto RC, Musselburgh Burgh, Pinkie St Peter's, Stoneyhill and Wallyford Primary Schools
- Musselburgh Grammar School
- Musselburgh and Wallyford Libraries
- Musselburgh East Community Learning Centre
- Brunton Hall
- John Muir House, Haddington

The statutory consultees are:

- The Parent Councils of Campie, Musselburgh Burgh, Loretto RC, Pinkie St Peter's, Stoneyhill, Wallyford and Whitecraig primary schools and Musselburgh Grammar School.
- The parents of pupils at Campie, Musselburgh Burgh, Loretto RC, Pinkie St Peter's, Stoneyhill, Wallyford and Whitecraig primary schools and Musselburgh Grammar School.
- The parents of any children expected to attend Wallyford Primary School, Pinkie St Peter's Primary School and Musselburgh Grammar School within two years of the date of publication of the proposal paper.
- The pupils at Campie, Musselburgh Burgh, Loretto RC, Pinkie St Peter's, Stoneyhill, Wallyford and Whitecraig primary schools and Musselburgh Grammar School.
- The staff at Campie, Musselburgh Burgh, Loretto RC, Pinkie St Peter's, Stoneyhill, Wallyford and Whitecraig primary schools and Musselburgh Grammar School.
- Musselburgh Area Partnership
- Musselburgh Community Council

SUMMARY OF PROCESS FOR THIS PROPOSAL DOCUMENT

Consideration by Council

1. This Proposal Document has been issued as a result of a decision by East Lothian Council on 26th April 2016. This document has been developed with reference to East Lothian Council's vision for education and additionally has been shaped with reference to the emerging Local Development Plan (LDP), a qualitative assessment exercise and a pre-consultation exercise conducted between June and July 2015.

Proposal Document issued to consultees and published on East Lothian Council's website

2. An information leaflet setting out details about the proposal and consultation meetings will be issued to the consultees listed on the preceding page. Advice on where the complete Proposal Document can be obtained will be included and will be published on East Lothian Council's Consultation Hub:
www.eastlothianconsultations.co.uk/education/musselburgh-school
3. If requested, copies of the proposal will also be made available in alternative formats or translated for readers whose first language is not English.
4. Although not a statutory requirement, officers of the Council conducted a pre-consultation exercise on aspects of the proposal contained in this document. This was undertaken between 24th June 2015 to 31st July 2015. The pre-consultation exercise was open to the pupils, parents and staff of all Musselburgh primary schools and the existing secondary school on the three education options for the delivery of secondary school facilities.

The comments resulting from this pre-consultation exercise can be found in Appendices B1 and B2 in the following report to Council: [Council Meeting 26/04/16](#)

5. A "Frequently Asked Questions" document has also been prepared which is also available on East Lothian Council's Consultation Hub:
www.eastlothianconsultations.co.uk/education/musselburgh-school.

Publication of advertisement in local newspapers

6. An advertisement will be placed in the local newspaper on 5th May 2016 and 19th May 2016. A pre-announcement will also be made on the Council's website and social media posts on the 2nd May 2016. In addition, there may be announcements related to the Proposal process on East Lothian Council's website, Facebook page and Twitter feeds.

Length of Consultation period

7. The consultation period will commence on **Tuesday 3rd May 2016** and last until close of business on **Wednesday 15th June 2016**, being a period of six weeks, which also includes the minimum 30 school days.

Format of Public meetings

8. A public meeting will be held at **Brunton Hall on Monday 30th May 2016 at 7.00pm**, the details of which are set out below in paragraphs 11-13.

Involvement of Education Scotland

9. When the Proposal Document is published, a copy will also be sent to Education Scotland by East Lothian Council. Education Scotland will also receive a copy of any relevant written representations that are received by the Council from any person during the consultation period or, if Education Scotland agree, a summary of them. Education Scotland will further receive a summary of oral representations made to the Council at the public meetings and drop in sessions that will be held and, as available, a copy of any other relevant documentation. Education Scotland require three weeks within which they prepare a report on the educational aspects of the proposal after the Council has sent them all representations and documents mentioned above. The three-week period will not start until after the consultation period has ended. In preparing their report, Education Scotland may enter the affected schools and make such reasonable enquiries of such people there as they consider appropriate.

Preparation of Consultation Report

10. The Council will review the proposal having regard to the Education Scotland report, written representations that it has received and oral representations made to it by any person at the public meeting and drop in sessions. It will then prepare a final Consultation Report. The report will be published in electronic and printed formats and will be advertised in the local newspapers. It will be available on the Council website and from Council Headquarters, public libraries in the vicinity of the affected schools, and the affected schools. Anyone who made written representations during the consultation period will also be informed about the report. The final Consultation report will include a record of the total number of written representations made during the consultation period, a summary of the written representations, a summary of the oral representations made at the public meetings and drop in sessions, the Council's response to the Education Scotland Report as well as any written or oral representations it has received, together with a copy of the Education Scotland Report and any other relevant information. It will also set out the actions the Council has taken to address any alleged inaccuracies and omissions notified to it. The Report will also contain a statement explaining how it complied with the requirement to review the proposal in

light of the Education Scotland Report and representations (both written and oral) that it had received. The final Consultation Report will be published and be available for further consideration for a period of 3 weeks.

Decision

11. This report together with any other relevant documentation will be considered after the end of the 3-week period, by the Council who will come to a final decision on this matter.

Scottish Ministers Call-in

12. This proposal does not concern a school closure and as such does not require the Council to notify Scottish Ministers after the Council takes its final decision.

Note on Corrections

13. If any inaccuracy or omission is discovered in this Proposal Document either by the Council or any person, the Council will determine if relevant information has been omitted or, there has been an inaccuracy. It may then take appropriate action which may include the issue of a correction or the reissuing of the Proposal paper or the revision of the timescale for the consultation period if appropriate. In that event, relevant consultees and Education Scotland will be advised. The person, or persons, who have raised concerns will receive an individual response to their submission

Public Meeting and drop in sessions

14. A formal public meeting will be held to discuss the proposal. Anyone wishing to attend the public meeting is invited to do so. The meeting, which will be convened by East Lothian Council will be addressed by the Head of Education, and other senior officers of the Council and chaired by an independent person.
15. The meeting will be an opportunity to:
- Hear more about the proposal
 - Ask questions about the proposal
 - Have your views recorded so that they can be taken into account as part of the consultation process.
16. The meeting will be held in **Brunton Hall on 30th May 2016 at 7.00pm.**
17. Drop in sessions will be held in :

Venue	Date	Time
Wallyford Primary School	16 May 2016	11:00am – 5:00pm
Brunton Hall	18 May 2016	10:00am – 2:00pm
Pinkie St Peter's Primary School	19 May 2016	11:00am – 5:00pm

18. A note will be taken at all meetings of comments, questions and officer responses. A summary of the points raised will be published on the Council website, and a copy will be made available on request. These notes will also be forwarded to Education Scotland along with all other submissions and comments that are received by the Council during the consultation process.

**EAST LoTHIAN COUNCIL
DEPARTMENT OF RESOURCES AND PEOPLE SERVICES**

THIS IS A PROPOSAL DOCUMENT

The Council has approved the following proposal for consultation:

It is proposed to establish a new secondary school in Wallyford from 2020, or as soon as possible thereafter, to provide additional secondary education provision within the Musselburgh cluster area.

Proposal:

That subject to the outcome of this consultation exercise:

- A new secondary school will be established in Wallyford from 2020, or as soon as possible thereafter, to provide additional secondary education provision within the Musselburgh cluster area.
- The site of the new secondary school will be in the area of Wallyford.
- The catchment area of the new secondary school will be created from the present Pinkie St Peter's Primary School and proposed revised Wallyford Primary School catchment areas.
- S1-S2 young people who reside within the catchment areas of Wallyford Primary School and Pinkie St Peter's Primary School will attend a new secondary school in Wallyford from 2020, or as soon as possible thereafter.
- The children and young people attending Wallyford Primary School and Pinkie St Peter's Primary School will transfer to the new secondary school at the end of P7 with effect from 2020 onwards, or as soon as possible thereafter.

This proposal also has implications for:

- Musselburgh Grammar School
- Sanderson's Wynd Primary School
- Ross High School

19. This proposal document is therefore issued with the intention of seeking views on two issues:

- The establishment of a new secondary school on a site in Wallyford; and
- the creation of its catchment area.

Background

20. East Lothian Council is committed to raising educational attainment and ensuring that all young people have the best opportunities in life. It is believed that the proposal is the most reasonable, viable and appropriate course of action open to it in creating additional secondary education provision within the Musselburgh cluster area. The reasons for the Council coming to this view and consulting on this proposal are set out in this proposal paper.
21. The Strategic Development Plan for South East Scotland (SDP) was approved by Scottish Ministers in June 2013. The SDP with its Supplementary Guidance on Housing Land requires the Local Development Plan (LDP) to ensure sufficient housing land is available to deliver 10050 homes during the period 2009 – 2024 with 6,250 of those homes capable of being delivered across East Lothian in the period to 2019.
22. The emerging LDP (draft proposed plan as approved by Council on the 17th November 2015) details a preferred approach of “Compact Growth” with a requirement for an additional secondary education solution in the Musselburgh cluster to allow this growth to come forward.
23. The Council must ensure provision can be made for the education of children in its area and must consult on certain changes in such arrangements before it can commit to them, including what is needed to make sites effective. The LDP is only deliverable based on approving an educational solution to meet the increase in projected pupil numbers. All of the uncommitted development in the existing Musselburgh cluster including that identified in the draft proposed plan requires the new secondary education facility in order for such development to come forward.
24. A pre-consultation exercise was carried out by the Council’s Education service with the pupils, parents and staff of all Musselburgh primary schools and the existing secondary school on the three education options for the delivery of secondary school facilities. This took place between 24th June 2015 to 31st July 2015.
25. This consultation generated 261 responses of which 78% were received from parents and pupils (see Appendices B1 and B2 in the following report to Council: [Council Meeting 26/04/16](#)). Headline statistics indicate that respondents consider factors such as the quality of the learning environment, safer routes to school and the availability of new subjects to be of a high priority when considering options for additional secondary education provision.

26. The additional secondary educational provision will directly affect the following schools and is considered in this Proposal Document:

- Musselburgh Grammar School
- Pinkie St Peter's Primary School
- Levenhall Nursery School
- Musselburgh Grammar School
- Ross High School
- Sanderson's Wynd Primary and Nursery School
- Wallyford Primary and Nursery School

The following schools are indirectly affected by this proposal document

- Campie Primary and Nursery School
- Loretto RC Primary and Nursery School
- Musselburgh Burgh Primary and Nursery School
- Stoneyhill Primary and Nursery School
- Whitecraig Primary and Nursery School

The factors which have been considered in the development of this Proposal Document are:

- The condition and suitability of the establishments to facilitate learning and teaching processes in the 21st Century;
- The need to develop inspirational learning environments which raise the aspirations of children and young people, staff and the wider community;
- The increasing pupil roll projection in the area;
- The need to address potential over-capacity in the school estate and create a sustainable school estate for future generations;
- The need to reduce the Council's carbon footprint; adapt to climate change and reduced finite natural resources.

General Population Data and School Pupil Rolls

Projected Population Data and school pupil rolls

27. There is significant house building committed and proposed for the Musselburgh area. To provide additional secondary education capacity required to accommodate pupils who will eventually live in planned housing developments in the Musselburgh cluster area, we are undertaking a consultation on the proposal to establish a new, second, secondary school, located within Wallyford (referenced as "4" on Map 1).

28. It is also proposed to adjust the secondary catchment area associated with Musselburgh Grammar School and create a new, second, secondary catchment area (referenced as "C" on Map 1) so that the pupil population, including the projected pupils from new

housing is distributed to make best use of capacity available at Musselburgh Grammar school and at the proposed new, second, secondary school.

29. Implementation of the proposal will mean:

- The Council will build a new, second, secondary school for the Musselburgh Area, located within Wallyford (referenced as “4” on Map 1) that would serve the Pinkie St Peter’s Primary School and proposed revised Wallyford Primary School catchment areas;
- Musselburgh Grammar School would continue to serve the Campie Primary School, Musselburgh Burgh Primary School, Stoneyhill Primary School and Whitecraig Primary School catchment areas.

30. All existing properties in the Pinkie St Peter’s Primary School and revised Wallyford Primary School catchment areas would transfer to the new, second, secondary school. A full list of these addresses is available to view on East Lothian Council’s Consultation Hub at: www.eastlothianconsultations.co.uk/education/musselburgh-school

31. The three affected areas include 3,536 houses, from which there are currently more than 405 pupils resident and attending East Lothian secondary schools.

Analysis of secondary schools attended by pupils resident in each area:

Area	Houses	Pupils	Musselburgh Grammar School	Preston Lodge High School	Ross High School
Pinkie St Peter’s	1,782	201	188	5	8
Wallyford	1,743	204	190	5	9
Sanderson’s Wynd	11	*			*
Totals	3,536	>405	378	10	>17

** less than 10 pupils – Numbers of less than 10 pupils have been suppressed for disclosure and data quality reasons*

The secondary pupil population for the Musselburgh Area, taking into account pupils from new housing with consent and those that will arise from the emerging Local Development Plan (LDP), is currently projected to have a peak roll of 2,337.

Pupil Numbers

32. The Musselburgh cluster area is currently served by Musselburgh Grammar School with a 2015 Pupil Census roll of 1,123 pupils and six non-denominational primary schools totalling 2,714 pupils. The Musselburgh cluster area also has one Roman Catholic primary school: Loretto RC Primary School with a 2015 Pupil Census roll of 179 pupils Table 1 below shows the current occupancy rate at each of the schools:

Table 1: Musselburgh Cluster Area Primary Pupil Rolls and School Capacities as at September 2015

School Name	(A) Working capacity / usable spaces	2015/16 Pupil Census roll	2015/16 % Occupancy Rate
Campie	444	395	89.0%
Musselburgh Burgh	325	308	94.8%
Pinkie St Peter's	358	322	89.9%
Stoneyhill	318	213	67.0%
Wallyford	257	262	101.9%
Whitecraig	100	89	89.0%
Loretto RC	179	220	81.4%

A number of primary pupils resident in the Musselburgh cluster area attend a Roman Catholic (RC) school or a school in another area, as shown in Table 2:

Table 2:

Catchment	Pupils attending school in area	Pupils attending RC school	Pupils attending outwith area	Total
Campie	345	17	3	365
Musselburgh Burgh	302	45	3	350
Pinkie St Peter's	297	39	13	349
Stoneyhill	144	1	1	146
Wallyford	331	48	14	393
Whitecraig	93	13	4	110
Total	1,673	163	38	1,713

There are 1,099 secondary pupils resident in the Musselburgh cluster area of which 49 pupils attend a secondary school in another cluster area in East Lothian.

Projected Population Data and School Pupil Rolls

33. The Council takes a number of factors into account when projecting pupil rolls, gathering information from NHS Lothian and information held on the Education Management Information System. The key factors influencing each forecast are:

- baseline population roll for each school or early years establishment
- the number of births in each school catchment area in East Lothian
- net stage migration rates for each school or catchment area
- The number of houses planned to be built in a school's catchment area
- P7 to S1 transfer rates
- S4-S5 and S5-S6 stay-on rates
- average new build child per house ratios

The pupil roll projections are trends-based forecasts and take into consideration a wide range of evidence from the local catchment area and/or school (as appropriate) including the number of children (births, pre-school, primary and secondary school age) attending East Lothian schools from new build housing developments in each catchment area since 2003/04.

The methodology for forecasting primary and secondary school rolls has been in use in East Lothian Council since 1996 and was originally developed by Lothian Regional Council. The methodology for projecting priority 2 year olds, 3 & 4 year olds and Additional Support Needs (ASN) Specialist Provision populations within each catchment area was developed by East Lothian Council during 2015 and 2016.

The Council acknowledges that it is difficult to accurately predict school rolls over a long timeframe. The projections are a best estimate of what the size of each relevant pupil population will be in the future when particular assumptions are made on the baseline roll. The assumptions applied are based on current demographics, averages and historical trends and do not allow for future changes in local or national policy that may also influence population changes.

The projections are strongly influenced by the initial baseline population as well as proposed new house build. Material changes in the number and phasing of proposed new houses between different planning applications being lodged may subsequently change previously modelled projections. Similarly, changes in baseline population and occupancy levels can have an impact on whether a proposed development can be accommodated within existing school capacity and nursery and ASN provision or not. As the baseline changes each year and house completion rates change it then impacts on the assumptions that are made about future births, migration, stay-on rates etc. The process of population change is cumulative and therefore the reliability of projections decreases over time. Projections for areas with small populations are also less reliable as baseline population changes have a bigger impact more quickly than in areas with larger populations.

The projected pupil rolls for Musselburgh Grammar School to 2021, taking into account pupils from new housing with consent and those that will arise from the emerging Local Development Plan (LDP), are shown in table 3 below.

Table 3: Projected Pupil Rolls for Musselburgh Grammar School to 2021 as at April 2016

2016	2017	2018	2019	2020	2021
1106	1122	1167	1238	1372	1484

Secondary Building Data – Capacity

34. The overall size of a new secondary school is based on the area required for its projected pupil roll. The Scottish Futures Trust standard area metric provides a global space allocation per student for the school roll, which is 10 square metres per student for a projected roll of 1200 or more. A schedule of accommodation is developed from this global space allocation including, but not limited to, general classrooms, science laboratories and other specialist spaces, ICT, art, music, drama and PE areas, together with general core accommodation for social, dining and staff. The schedule of accommodation for each school is developed through consultation between the Council and relevant stakeholders from the school and wider community including Community Planning partners.

Table 4 below shows the current capacity at Musselburgh Grammar School:

Table 4: Musselburgh Grammar School Pupil Roll and School Capacity as at September 2015

School Name	Usable spaces	2015/16 Pupil Census roll	2015/16 % Occupancy Rate
Musselburgh GS	1,350	1,123	83.2%

Musselburgh Grammar School does not currently have the capacity to accommodate the projected pupil numbers that will arise from the emerging Local Development Plan (LDP)

Financial implications

35. Investment will be required to establish a new, second, secondary school. The high level indicative Capital costs of a Second Secondary School for the Musselburgh Catchment area are estimated to be in the region of £35M. However this is dependent upon the final overall size and design of the school.

The costs of providing an upper and lower school are estimated to be similar to a secondary school but again dependent upon overall size and design.

The high level indicative costs of providing one secondary school for the whole of the Musselburgh area is estimated to be in the region of £65M - £70M again dependent upon the final overall size and design of the school.

The cost of the provision will be met by the Council partially off-set by Developers contributions. Developers have a legal obligation to pay their proportionate share of costs of the new Education facility directly related to the impact of the additional housing being built.

Location

36. A qualitative assessment of potential sites for future secondary schools in the Musselburgh area was prepared in February 2015 (see Appendix A in the following report to Council: [Council Meeting 26/04/16](#)). This provided an assessment of potential sites to establish their suitability and to provide a range of options for the delivery of secondary school facilities in the Musselburgh area. Initially the sites were assessed in respect of area and ownership. Sites that were shown to be suitable were then assessed in respect of access, pupil movement and various constraints. Three sites were identified as being suitable for the various school options. Following amendment at the Council meeting 17th November 2015 and the removal of the proposal (MH10) Goshen New Secondary School from the draft proposed LDP, two suitable sites remain. These are:

- Wallyford
- Craighall

37. Taking into account pupil movement, accessibility, limited transport services and the impact of all of the aforementioned could have on pupil safety, access to extra-curricular activities and to community facilities the preferred potential site for the additional provision is at Wallyford. The new site is close to the previous proposed site to the extent that the assessment factor results remain applicable.

38. Land identified for the placement of a new secondary school immediately to the east of the existing Wallyford settlement should be accessible both in public transport and sustainable transport terms. The school development site being in close proximity to the existing settlement has the potential for well developed pedestrian and cycle (shared) links connecting onto a wider permeable network.

39. The Craighall site has significant constraints including access, pupil movement and limited public transport services. This has the potential to have an adverse impact on young people's uptake of extra-curricular activities and the growing community's access to community facilities. Building a new school on the Craighall site would also result in two secondary schools being within close proximity of one another with both located within the western part of the cluster. Whilst the Wallyford site did not form part of the original qualitative assessment, the proposed site is closer to the community and pupil movement

and accessibility is enhanced. Furthermore, when issues such as improved pupil movement, accessibility and transport services and the positive impact all of the aforementioned could have on pupil safety are taken into account and combined with the enhanced access to extra-curricular activities and to community facilities the preferred potential site for the new school is at Wallyford.

Proposal for consultation

Introduction

40. Taking all of the information contained within Paragraphs 20 to 39 of this report it can be evidenced that:

- Musselburgh Grammar School will exceed capacity by 2020;
- By locating the school at Wallyford it will be at the heart of the community, provide a hub for learning, activities and facilities that will make a contribution to improving people's health and wellbeing, adding to the strength and vibrancy of its community;
- The Wallyford site should be accessible both in public transport and sustainable transport terms. The school development site being in close proximity to the existing settlement has the potential for well developed pedestrian and cycle (shared) links connecting onto a wider permeable network.;
- Road safety will be a priority and measures needed to discourage vehicle trips during the school travel times and indiscriminate parking behaviour associated with the drop off of children.
- Wider measures will also be needed to support, facilitate and encourage active travel, linked with safer routes to school. Consideration of improvements in the wider catchment area to remove barriers to cycling and walking will be considered and developed accordingly.

41. East Lothian Council are undertaking a Transport Appraisal in the context of the Local Development plan. The Appraisal is to examine the effect of the cumulative impacts from the housing and economic development land allocations in East Lothian on the local and strategic road and rail networks and evaluate the effectiveness of the interventions.

A Transport Assessment considers the local impact of development in an area, the problems caused by the single or multiple allocations, examining active travel arrangements, public transport services, the injury accident history, existing journey times, junction capacities, flows and parking controls. The assessment will make statements on the current arrangements and possible interventions to either maintain or enhance the situation. We will endeavour to have a no net detriment as a consequent of the development.

Proposal

42. This proposal would result in a new, purpose-built facility for secondary age young people in the Musselburgh area.

The provision of additional secondary education capacity required for the Musselburgh cluster area being a new, second, secondary school in Wallyford involving:

- Establishment of a catchment area for the proposed new secondary school
- Revision of the existing catchment boundaries of Pinkie St Peter's Primary School, Wallyford Primary School, Musselburgh Grammar School, Sanderson's Wynd Primary School and Ross High School.
- Variation of the existing admission arrangements to alter the catchment areas for Musselburgh Grammar, Sanderson's Wynd and Ross High.
- Establishment of temporary admission arrangements to accommodate the phased population of the new school
- Variation in the arrangements for the transfer of pupils from a primary school to a secondary school by altering the designated secondary school for the directly affected primary schools and establish temporary transfer arrangements to accommodate the phased population of the new secondary school.

The Council is keen to receive comment on the proposal to the solution of the requirement for additional secondary education provision in the Musselburgh area to be a new second secondary school in Wallyford.

Officers have reviewed the available land within the Musselburgh area and have come to a view that the suitable site available is in Wallyford (referenced as "4" on Map 1).

Consideration was also given by officers to the inclusion of other schools in the area and the impact of building a new establishment such as the one outlined above. The proposed adjustment of catchment areas would ensure that the pupil population, including the projected pupils from new housing is distributed to make best use of capacity available at both Musselburgh Grammar School and the proposed new, second, secondary school.

Transition arrangements

43. Children from the affected primary schools who will transfer to the new secondary school will benefit from the new purpose built secondary school. The pupils associated with this proposal will benefit from being in a school where capacity pressures are not impacting on the learning environment e.g. flexibility of learning spaces, flow of pupil traffic etc. A full transition programme will be in place to support progression in learning and in order that learners are prepared to take a full part in secondary education with their peers in the new school.

- The new S1 intake at the effective date, i.e. August 2020 or as soon as thereafter, living in the Pinkie St Peter's and Wallyford catchment areas would transfer to the new, second, secondary school.

- The pupils attending Musselburgh Grammar School, living in the Pinkie St Peter's and Wallyford catchment areas and going into S2 and S3 at the effective date, i.e. August 2020 or as soon as thereafter, would transfer to the new, second, secondary school.
- The pupils attending Musselburgh Grammar School, living in the Pinkie St Peter's and Wallyford catchment areas and going into S4, S5 and S6 at the effective date, i.e. August 2020 or as soon as thereafter, would remain at Musselburgh Grammar School for the remainder of their senior phase education.
- Younger siblings of pupils attending Musselburgh Grammar at the effective date, would have the option to attend Musselburgh Grammar if they wish.

Appraisal of alternative options

44. A pre-consultation exercise was carried out by the Council's Education Service with the pupils, parents and staff of all Musselburgh primary schools and the existing secondary school on three education options for the delivery of secondary school facilities. This took place 24th June 2015 until 31st July 2015 (see Appendices B1 and B2 in the following report to Council: [Council Meeting 26/04/16](#)).

Views were sought on the three alternative solutions identified for providing the required additional capacity.

- Option A - a new second secondary school serving part of the Musselburgh area
- Option B – a new S4- S6 senior phase school for Musselburgh Grammar School on a separate site
- Option C – a new enlarged S1 –S6 Musselburgh Grammar School on a new site.

This consultation generated 261 responses of which 78% were received from parents and pupils (see Appendices B1 and B2 in the following report to Council: [Council Meeting 26/04/16](#)). Headline statistics indicate that respondents consider factors such as the quality of the learning environment, safer routes to school and the availability of new subjects to be of a high priority when considering options for additional secondary education provision.

In the pre-consultation exercise, 40% of respondents indicated Option A as being acceptable compared to 26% for Option B and 32% for Option C. Less than half (43%) considered one secondary school for the whole Musselburgh area to be very important or important.

An appraisal of each of the three school options on each of the two potential sites was carried out based on the qualitative criteria and features which formed part of the pre-consultation (see Appendix C in the following report to Council: [Council Meeting 26/04/16](#)). The option that ranked highest in terms of quality of provision based on the objectives is a new, enlarged Musselburgh Grammar School located in Wallyford, closely followed by a new second secondary school in Wallyford.

Taking into consideration the advantages and disadvantages of each option as detailed above and below as well as the significant additional costs of a new, enlarged secondary school, the best value option for the Council is a new second secondary school in Wallyford.

Reasons why Option B is not being proposed:

45. A review of school consultations conducted by other local authorities presented evidence relative to the consideration of a split site school. The results indicate a desire to move away from an existing split site provision due to the following reasons:

- the potential adverse impact on young people's learning experiences resulting from increased staff movement across school sites;
- the potential adverse impact on continuity and progression in the curriculum;
- increased teacher travel costs;
- reduced pupil contact time for teachers;
- pupil safety in moving between sites;
- the potential for higher levels of truancy if young people have a greater distance to travel to school;
- planning staff movement between sites during the school day;
- impact on capacity to supervise behaviour due to staff travel between sites;
- the negative impact of separating junior and senior pupils that minimises opportunities for senior pupils to act as positive role models to younger peers;
- reduced opportunities to hold whole school and cross-stage events and activities such as assemblies that result from physical capacity restrictions and have a negative impact on a whole-school community ethos.

Establishing a new S4–S6 senior phase facility would introduce the requirement for further transition arrangements in relation to physical relocation. If this option was to be pursued, consideration would need to be given to young people's mental, emotional, social and physical needs in planning these transitions particularly for those within the specialist provision.

The pre-consultation exercise identified some advantages to this option mainly in relation to no changes to existing secondary catchment areas and the enhancement of provision. However, many of the concerns identified above are reflected in the comments made by respondents to the pre-consultation exercise (see Appendices B1 and B2 in the following report to Council: [Council Meeting 26/04/16](#)).

To offset disadvantages set out above, teaching staff could be recruited and deployed to teach in either the S1–S3 or S4–S6 establishment only. However, this is likely to impact significantly on recruitment and retention of teaching staff.

Reasons why Option C is not being proposed:

46. A new single S1 to S6 Musselburgh Grammar School sized to accommodate all currently committed and projected future growth in the Musselburgh area is currently projected to have a peak roll of 2,337.

Scottish School Estate statistics show that the three largest secondary schools out of the 365 Scottish secondary schools have school rolls of between 1,700 and 1,995 pupils. Educational literature on the issue of school size is generally inconclusive citing advantages and disadvantages to large and small schools in relation to improving outcomes for learners.

The Organisation for Economic Cooperation and Development (OECD) Directorate for Education and Skills review of School Size Policies November 2014 (see link at section 7.2 in the following report to Council: [Council Meeting 26/04/16](#)) concluded that, even if there may be benefits to larger schools, such as broader academic curricula with specialised courses or a wider choice of extra-curricular activities, these benefits can unequally affect pupil performance with some pupils benefitting more than others, in particular those from socioeconomic advantaged backgrounds. In the pre-consultation exercise, respondents recognise that a larger school has the potential to offer a broader curriculum, including vocational programmes and that all members of the community benefit from a new single facility.

However, respondents also commented on their concerns about young people's ability to cope in a larger school, the resulting impact on their achievements and also on the potential impact on maintaining a community spirit and positive ethos.

Respondents to the pre-consultation exercise were more in favour of a school roll ranging from 1,000 to 1,700 pupils than a school roll above 1,700. Less than half (43%) considered one secondary school for the whole of the Musselburgh area to be very important or important.

Education Benefits Statement

47. The Educational Benefits Statement, for the proposal, has been prepared having regard to the Guidance and Explanatory Notes published by the Scottish Government in association with the Schools (Consultation) (Scotland) Act, 2010 and which are available for reference at the following websites, respectively:

www.scotland.gov.uk/Resource/Doc/91982/0097130.doc

www.oqps.gov.uk/legislation/acts2010/en/aspen_20100002_en.pdf

"An education authority shall endeavour to secure improvement in the quality of school education which is provided in the schools managed by them; and they shall exercise their functions in relation to such provision with a view to raising Standards of education."

As required by the Schools (Consultation) (Scotland) Act, 2010, this Educational Benefits Statement is written from the perspective of benefits, should the proposal be implemented. Additionally the self-evaluation tool provided by Education Scotland was used to ensure compliance with the amended procedures now in place from the Act.

- A. The East Lothian Partnership's aim for East Lothian is set out in its statement of intent:
"We will work in partnership to build an East Lothian where everyone has the opportunity to lead a fulfilling life and which contributes to a fair and sustainable future."
- B. East Lothian Council's vision is to provide the best education service in Scotland via Inclusion, Achievement, Ambition, Attainment and Progress for All. We strive to achieve our vision and these principles through the actions taken by the Education Service to improve the quality of experiences we provide for children, young people, adults and families of East Lothian. The establishment of a new secondary school will make a clear statement about the value the Council places on investing in education and lifelong learning, and provide a new vibrant learning community. The new secondary school will offer young people the opportunity to learn and develop within a state-of-the-art facility which will benefit from modern design and materials and consider good practice learned through collaborative working with other Councils and through experience and good practice developed within East Lothian. The building will be sustainable and energy efficient.

A new modern secondary school will signal to the whole community how East Lothian Council values 21st century learning. This new build will represent best value through the effective and efficient use of Council resources. By locating the school at the heart of the community it will provide a hub for learning, activities and facilities that will make a contribution to improving people's health and wellbeing, adding to the strength and vibrancy of its community. The proposed new school will provide excellent facilities for children, families and other users outwith core school hours. The new school will provide accessible facilities that could be used to meet the learning, leisure and social needs of the community. It is envisaged that all children and young people in the area will benefit from the development of the new secondary school.

A new modern secondary school will benefit the whole community and support East Lothian Partnership's overarching priority to reduce inequalities both within and between our communities and the delivery of the 3 strategic objectives:

- Sustainable Economy
 - Resilient People
 - Safe and Vibrant Communities
- C. It is important that the school is flexible and allows the creative and multiple use of spaces by the staff and pupils, and also by the community. Whilst the design of the school is still to take place, however, the accommodation will include purpose-designed facilities including a sports and recreation facilities, dining areas, digital technology, drama and the arts and other learning resources. There will be a number of grass sports pitches and an All Weather Pitch. Car parking, bus bays and drop off areas will also form part of the design.
- D. Experience in our other new school buildings has demonstrated that a new and flexible learning environment has inspired pupils and has a positive impact on the general health

and wellbeing of learners, increases aspirations, attainment, achievement and positive destinations beyond school.

- E. The specific layout and plans for the new school will be developed in due course and will be made available through further consultation with key stakeholders through the establishment of a User Reference Group and other associated meetings. The purpose and role of the User Reference Group is to assist with providing relevant local information to allow the Design Team to develop the outline concept design into an operational design. The User Reference Group normally consists of representatives such as an Education Officer, Architectural Design, Head Teachers, Pupil Council representatives, Parent Council representatives, Community Learning and Development, Library representative, Community Police etc.
- F. The new school will benefit from design practices which support the varied range of teaching environments that best deliver learning. Spaces for learning will be designed in such a way as to allow a range of teaching styles and approaches including: active learning, interdisciplinary learning and outdoor learning.
- G. The digital technologies will provide a platform for emerging and new technologies to be used to support learning and enable the full potential of the use of technologies to the benefit of young people, including distance learning opportunities. The provision of high quality technology for learning will provide the potential to transform ways of learning and teaching by giving young people and staff flexible and ubiquitous access to a fully digital learning environment.
- H. The curriculum will provide the opportunity for learners to achieve across all curricular areas and develop skills, attributes and capabilities through courses aligned with the design principles of Curriculum for Excellence: challenge and enjoyment, breadth, progression, depth, personalisation and choice, coherence and relevance. Children and young people will be provided with a broad range of opportunities for personal achievement and interdisciplinary learning across all curriculum areas and subjects by building on best practice in curriculum design.
- I. The new school will support the delivery of vocational learning and promote skills for learning, life and work and deliver positive outcomes for young people in a modern well equipped environment.
- J. The shared flexible learning and teaching spaces in the new school will enable staff to work together in a collaborative manner and provide more opportunities for co-operative working between pupils.
- K. The recruitment of a high-quality skilled leadership team and teachers would increase the expertise within our existing schools and the planning and delivery of the

curriculum. New staff provide the opportunity to extend our school community and promote and support innovation, creativity and practitioner enquiry which will lead to positive change.

- L. The opportunity for the new secondary school and Musselburgh Grammar to work collaboratively to enhance educational provision could lead to increased personalisation and choice for young people within the immediate area and more widely across East Lothian. It will also enhance support for the authority's approach to Developing our Young Workforce through the provision of additional skills for learning, life and work. The provision of new programmes and courses will mitigate against young people disrupting their learning within their school based subject areas in order to attend those courses delivered out with East Lothian. Young people from both secondary schools will have the opportunity of engaging in a broader range of curricula and pastoral activities. This collaboration between the two schools could also offer a range of varied extra-curricular opportunities to pupils across the two sites.
- M. As well as increasing opportunities for greater personalisation and choice through an expanded range of in-house provision across the two secondary schools in the area, learners will also be able to access a wider range of learning pathways through increasing links with partners such as Edinburgh College, Queen Margaret University, Skills Development Scotland, Industry and other partners.
- N. The new school will ensure that accessibility for learners with disabilities complies with the Council's Accessibility Strategy and the Equality Act (2010). The new school will be designed in such a way as to promote accessible, inclusive learning which will meet the needs of all learners including those with Additional Support Needs.
- O. Pupil Support staff and teaching staff will work closely with all associated primary schools to ensure that the learning, pastoral and social needs of children are fully supported during the transition process, including enhanced arrangements for children and young people with Additional Support Needs.
- P. The new school will build on current, and facilitate new, opportunities for effective integrated working with other services and partner agencies and will provide necessary support to children and families in the new school catchment area.
- Q. The new school's design, construction and operation will be environmentally and energy efficient; contributing directly to delivering the year-on-year reductions in greenhouse gas emissions introduced by the Climate Change (Scotland) Act 2009 and provide a rich context for learning for children and young people about sustainability now and in the future.
- R. Reduced congestion and planned travel options will make it safer for our young people to access their places of learning and contribute to improved air quality and traffic

management in Musselburgh. Pupils from the Wallyford and Pinkie Catchments areas will be within walking distance of the new school contributing to the sustainability agenda.

Summary – Balancing Educational Benefits against the impact on Musselburgh Grammar School and its communities as a Result of Realigned Catchment Areas

48. In considering how educational benefits weigh against any potential disadvantages reference should be made to the impact on the other schools and communities within the area. All of the schools involved in this proposal currently provide an effective education for their children and young people. Section 1 of the Education (Scotland) Act 1980 requires Councils to secure for their area adequate and efficient provision of school education. Section 17 of the Act requires Councils to provide sufficient school accommodation. The Act therefore places a legislative duty on the Council to plan for the growth in our communities. The Council recognises this duty as an opportunity to enhance the learning opportunities for young people whilst bringing positive benefits to the whole community.

Parental and community perceptions relating to the introduction of a new second secondary school within the Musselburgh area can be addressed through the strong partnership working that already exists within our communities and cluster arrangements. East Lothian Council will work closely with children, young people, and parents to establish a new sense of school community within the context of the wider Musselburgh community.

The establishment of the new secondary school will have a positive impact on the balance between the numbers of pupils in Musselburgh Grammar and the new secondary school.

By locating the school at the heart of the community it will provide a hub for learning, community activities and facilities that will make a contribution to improving people's health and wellbeing, adding to the strength and vibrancy of its community. The proposed new school will provide excellent facilities for children, families and other users outwith core school hours. The new school will provide facilities which could be used to meet the learning, leisure and social needs of the whole community. The new secondary school will provide a range of sports and community facilities within its locality. It is anticipated that this proposal may have wider benefits to the community in respect of:

- local employment opportunities
- apprenticeships on the construction of the new school.

It is believed that this proposal will positively impact on local, social or economic activities and will support the local development of the area.

Sustainability

49. Sustainability will be a key factor in the design of the new school and will be incorporated into every feasible aspect. This ranges from the materials used to the heating system and the lighting provided, and also to the landscaping of the external site to encourage biodiversity.

Likely effect caused by different travelling arrangements

50. It is current Council policy to provide free transport to and from school for secondary aged pupils who reside more than 2 miles from their catchment area school.

There are a number of criteria used to determine whether free transport is provided to school, including:

- Any pupils who live outwith the Council's distance criterion;
- Those who live within the distance criterion, but for whom the walking route to school is assessed as unsafe;
- If a child has a medical condition which requires them to be transported to and from school; or
- If a child is at a critical stage of education and requires to be kept at their current school.

Management of Proposals

51. It is intended that pupils from the proposed revised catchment area of Wallyford Primary School, the existing Pinkie St Peter's Primary School catchment area and S1/S2 pupils from both of these catchment areas attending Musselburgh Grammar School in session 2019/20 will be integrated within a new build from the start of the 2020-21 session, which commences in August 2020, or as soon as possible thereafter.

It is acknowledged that should the proposal be approved and implemented, forward planning will be required from the Department of Resources and People Services as a matter of good management practice in securing the future staffing required. This planning is necessary in respect of curriculum delivery, staff management and associated issues. This will be secured under the normal management arrangements for such projects. The senior leadership team and staff necessary to secure a smooth pastoral and curricular transition will be in post 3 months prior to the opening of the new school.

The name of the new secondary school would not be determined by the Council at this stage of the project. Such matters are determined in consultation with parents, staff and the young people themselves. Again there are proven, successful procedures in place to support this process.

High on the list of priorities for officers would be the development of a comprehensive transition programme to support the transition into the new school.

Integrated Impact Assessment

52. An integrated impact assessment has been undertaken as part of the consultation as it is important to understand how the needs of different groups may differ. Integrated Impact Assessment is a tool which enables the Local Authority to consider the needs of different groups. It enables it to:

- Develop better policies and practices, based on evidence
- Prevent or mitigate negative impacts on determinants
- Take effective action on key social policy areas including equality and human rights, poverty and the economy
- Meet legal requirements in relation to equality, sustainability and the environment and the need to promote human rights in all areas of life
- Consider the potential to advance/hinder the wellbeing of children and young people
- Be more transparent and accountable

The Local Authority is required by legislation to assess its proposals for equality impact to ensure that it does not unlawfully discriminate.

East Lothian Council will continue to consider the implications of this proposal in relation to equality, to reflect any issues raised in writing or oral representation made as part of the consultation process. The result of the Integrated Impact Assessment will be included in the Final Consultation Response document.

Conclusion

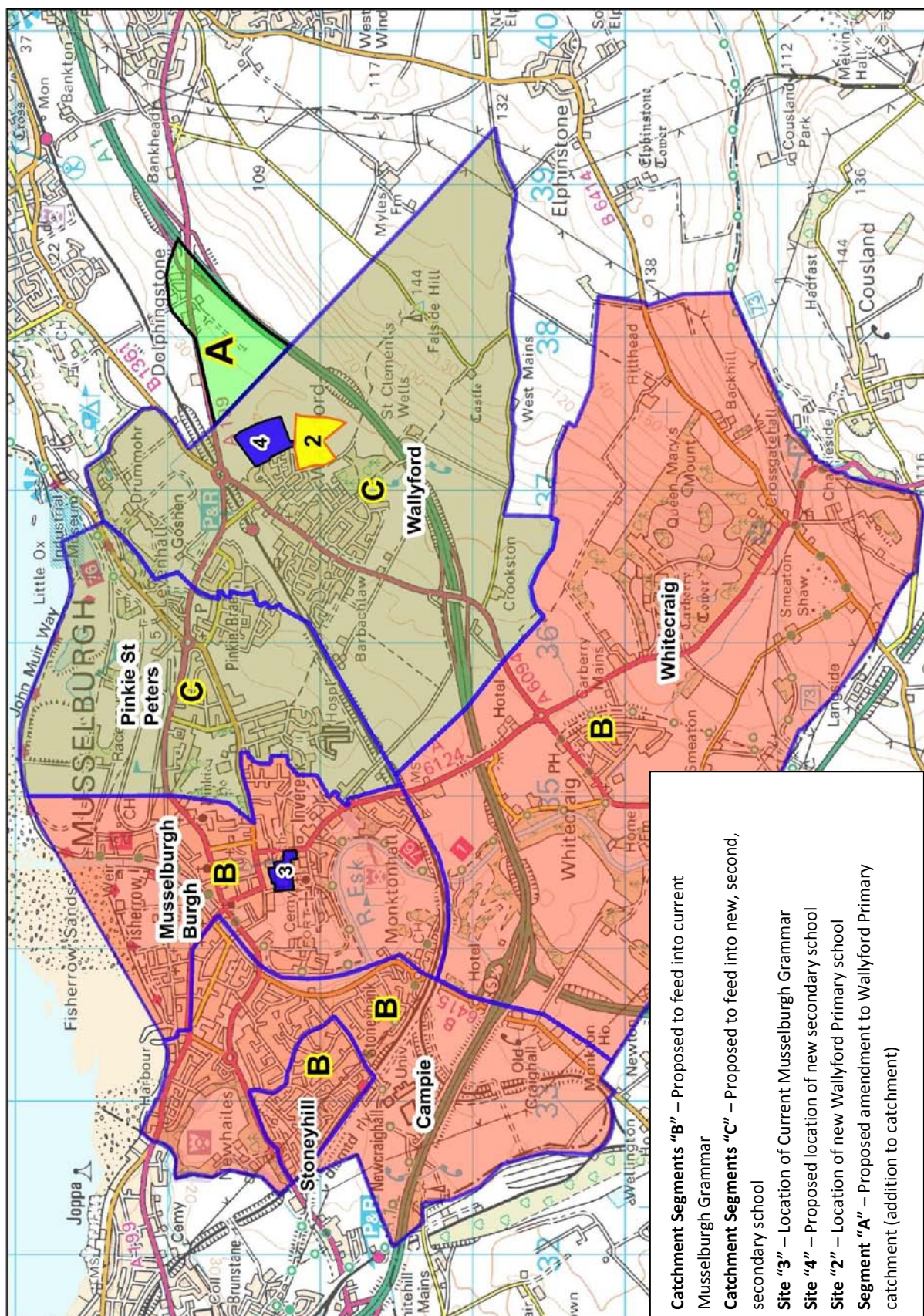
53. It is believed that, if implemented, the current proposal to locate a new secondary school in Wallyford to provide additional secondary education provision within the Musselburgh cluster area for occupancy by August 2020 will bring significant educational benefits to children and young people and will also bring positive benefits to the whole community. The local communities are well served by the existing secondary school and primary schools. They act as focal points for community events. The provision of a new secondary school will enhance, build upon and improve the existing provision further. It is also believed that the current proposal is the most reasonable, viable and appropriate course of action open to it. The reasons for this are set out within this proposal paper.

It is believed that the measures proposed in this document will enhance the provision of secondary education in East Lothian. The proposal will provide a positive balance between the location of schools and the provision of schools within their local communities for children and young people while alleviating the projected pupil roll in Musselburgh Grammar School. Future pupil projections have been considered and the new secondary school can accommodate all projected and potential pupils from the catchment area.

Environmental impacts have been summarised and detailed work will continue to be undertaken as part of the environmental assessment for this proposal.

Overall, there are strong educational and economic arguments in favour of this proposal. In order to be able to meet the timescale for the delivery of a new secondary school in Wallyford for occupancy from August 2020 it is necessary to go out to consultation for educational purposes in the summer term 2016.

MAP 1 – MUSSELBURGH CATCHMENT AREA MAP





New Additional Secondary Education Provision in the Musselburgh Area – Consultation Questionnaire

A Public Meeting will be held to discuss the proposals on Monday 30 May 2016 in the Brunton Hall at 7pm

Please note – the closing date for submission of Consultation Questionnaires is Wednesday 15 June 2016.

We would like to make all comments made by the public during this consultation available at the end of the consultation period. Those sending in a response, whether by letter or electronically should know that their response will be open to the public once the consultation period ends. If they do **not** wish their response to be publicly available, they should tick the box below:

"I wish my response to be considered as confidential with access restricted to elected members and council officers of East Lothian Council. My comments will not be made available to the public" ☐

1. Are you responding to this questionnaire as an individual or on behalf of an organisation?

Individual ☐

Group / organisation (please give details in the box below) ☐

2. Which category best describes you? (Parents – please tick more than one box if you have children at different schools)

	Campie	Burgh	Pinkie St Peter's	Stoneyhill	Wallyford	Whitecraig	Musselburgh Grammar	Other school
Parent of current pupil(s)	<input type="checkbox"/>	<input type="checkbox"/>	<input type="checkbox"/>	<input type="checkbox"/>	<input type="checkbox"/>	<input type="checkbox"/>	<input type="checkbox"/>	<input type="checkbox"/>
Parent of future pupil(s)	<input type="checkbox"/>	<input type="checkbox"/>	<input type="checkbox"/>	<input type="checkbox"/>	<input type="checkbox"/>	<input type="checkbox"/>	<input type="checkbox"/>	<input type="checkbox"/>
Pupil	<input type="checkbox"/>	<input type="checkbox"/>	<input type="checkbox"/>	<input type="checkbox"/>	<input type="checkbox"/>	<input type="checkbox"/>	<input type="checkbox"/>	<input type="checkbox"/>
Member of staff	<input type="checkbox"/>	<input type="checkbox"/>	<input type="checkbox"/>	<input type="checkbox"/>	<input type="checkbox"/>	<input type="checkbox"/>	<input type="checkbox"/>	<input type="checkbox"/>

Other (please give details in the box below, for example, 'local resident')

3. If you are a parent, please indicate which stage of education your child / children currently attends (please tick all that apply)

Not yet in Education	<input type="checkbox"/>	P4 – P7	<input type="checkbox"/>
Pre-school Education (age3-5)	<input type="checkbox"/>	S1 – S6	<input type="checkbox"/>
P1 – P3	<input type="checkbox"/>	No longer in school Education	<input type="checkbox"/>

4. Please indicate which catchment area you currently live in (please tick just one). See map on page 4.

Campie Primary School	<input type="checkbox"/>	Stoneyhill Primary School	<input type="checkbox"/>	Don't know	<input type="checkbox"/>
Musselburgh Burgh Primary	<input type="checkbox"/>	Wallyford Primary School	<input type="checkbox"/>	Other	<input type="checkbox"/>
Pinkie St Peter's Primary School	<input type="checkbox"/>	Whitecraig Primary	<input type="checkbox"/>		

There is significant house building committed and proposed for the Musselburgh area. To accommodate the increase in pupil population we are proposing to establish a new, second, secondary school in Wallyford that will serve the Pinkie St Peter's and the proposed revised Wallyford catchment areas.

The existing Musselburgh Grammar School would continue to serve the pupil population from the Campie, Musselburgh Burgh, Stoneyhill and Whitecraig catchment areas.

Further detailed information can be found in the **Consultation Document** and at
www.eastlothianconsultations.co.uk/education/musselburgh-school

5. To what extent do you agree or disagree with the proposal to establish a new, second secondary school in Wallyford that will serve the Pinkie St Peter's and proposed revised Wallyford catchment areas?

Strongly agree	<input type="checkbox"/>
Agree	<input type="checkbox"/>
Disagree	<input type="checkbox"/>
Strongly disagree	<input type="checkbox"/>
No opinion	<input type="checkbox"/>

6. What factors have most influenced your decision / view? (please tick all that apply)

Location of the proposed school	<input type="checkbox"/>
Transport / access issues	<input type="checkbox"/>
Size of the proposed school	<input type="checkbox"/>
The curriculum at the proposed school (see Education Benefits Statement included in the Consultation Document)	<input type="checkbox"/>
Community Facilities that would be available at the new school	<input type="checkbox"/>
Cost of building the proposed school	<input type="checkbox"/>
Other (please give details in the box below)	<input type="checkbox"/>

Please use this box if you wish to give a reason(s) for your view or if you wish to make any further comment on the proposals (if you need to continue on a separate page please attach)

Thank you for completing this Consultation Questionnaire, please note the closing date for submission of completed questionnaires is Wednesday 15 June 2016.

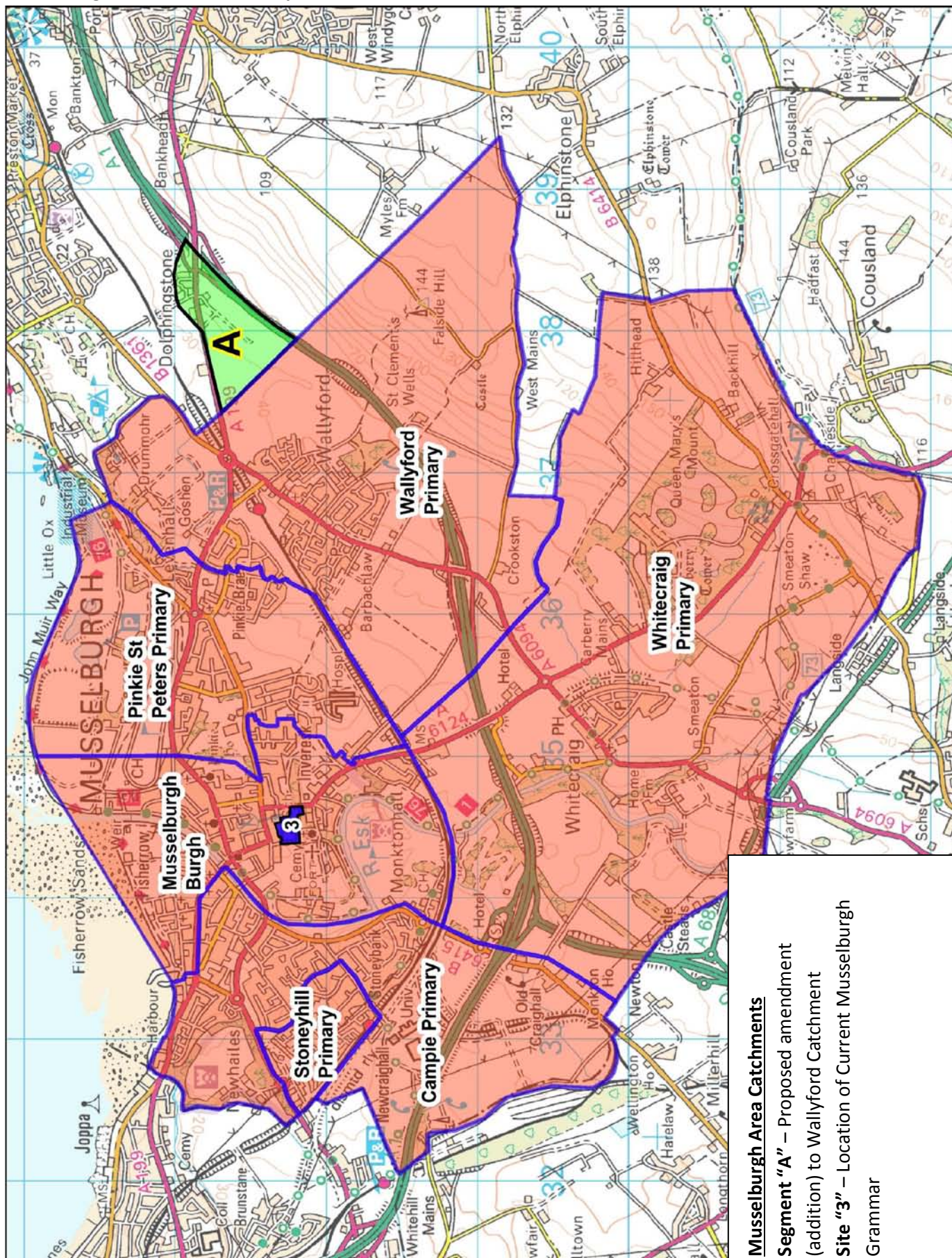
You can return your completed questionnaire by post to:

Musselburgh Consultation
East Lothian Council
Resources and People Services
John Muir House
Haddington
EH41 3HA

Or deposit it in one of the collection boxes at the following locations (available from Friday 6 May 2016):

- Campie, Loretto RC, Musselburgh Burgh, Pinkie St Peter's, Stoneyhill and Wallyford Primary Schools
- Musselburgh Grammar School
- Musselburgh and Wallyford Libraries
- Musselburgh East Community Learning Centre
- Brunton Hall
- John Muir House, Haddington

Musselburgh Area Catchment Map



Musselburgh Area Catchments

Segment "A" – Proposed amendment (addition) to Wallyford Catchment

Site "3" – Location of Current Musselburgh Grammar

Grammar