

EAST LOTHIAN SPECIAL LANDSCAPE AREAS

- 1 Lammermuir Moorland
- 2 Whiteadder
- 3 Lammer Law\, Hopes to Yester
- 4 Monymut to Blackcastle
- 5 Danskine to Whitecastle
- 6 Halls to Bransly Hill
- 7 Doonhill to Chesters
- 8 Whittingehame to Deuchrie
- 9 Humbie Headwaters
- 10 River Esk
- 11 Biel and Belton
- 12 Bolton
- 13 Garleton Hills
- 14 Elphinstone Ridge
- 15 Traprain and Tyne Valley
- 16 Whitekirk and Balgone Outcrops
- 17 Garden County Farmland
- 18 Ormiston Yew and Fountainhall
- 19 North Berwick Law

- 20 Linplum
- 21 Clerkington and Tyne Walk
- 22 Samuelston
- 23 Winton Walks
- 24 Kingston
- 25 Morham
- 26 North Berwick to Seton Sands Coast
- 27 Belhaven Bay
- 28 Tantallon Coast
- 29 Dunbar to Barns Ness coast
- 30 Thorntonloch to Dunglass Coast
- 31 Fisherrow Sands
- 32 Prestonpans Coast

OTHER SPECIAL LANDSCAPE AREAS

- Midlothian Council
- Scottish Borders Council

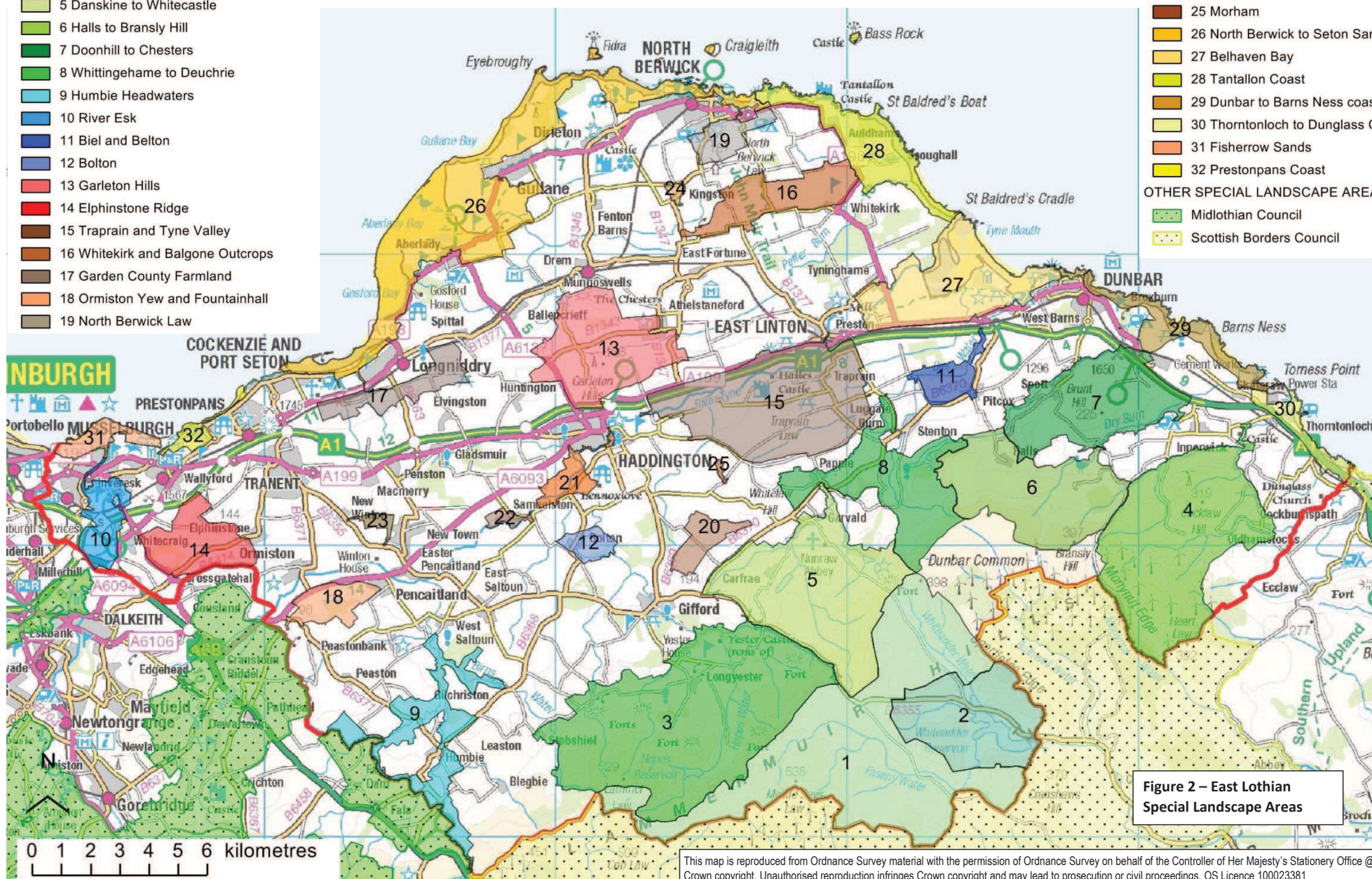


Figure 2 – East Lothian Special Landscape Areas

This map is reproduced from Ordnance Survey material with the permission of Ordnance Survey on behalf of the Controller of Her Majesty's Stationery Office @ Crown copyright. Unauthorised reproduction infringes Crown copyright and may lead to prosecution or civil proceedings. OS Licence 100023381