

DRAFT

East Lothian Play Sufficiency Assessment

May 2023



Welcoming sign in Ormiston Park

1 Background to Play

The national vision for play

The Scottish Government has committed to embedding children's right to play across every aspect of children's everyday lives.

The vision for play in Scotland

*"We want Scotland to be the best place to grow up. A nation which values play as a life-enhancing daily experience for all our children and young people; in their homes, nurseries, schools and communities."*¹

Why is play important?

Children's right to play is enshrined in the UN Convention on the Rights of the Child (UNCRC). Research² clearly demonstrates the individual and societal benefits of play for children and young people. We now know that play leads to a wide range of interconnected beneficial outcomes to play across the cognitive, physical, emotional and social developmental areas. However, research also demonstrates that play also has positive societal outcomes through building healthier and more tolerant societies.

*"From the perspective of politicians and policy makers... investing in play can, and does, lead to multiple benefits including improved educational attainment, a healthier society and increased levels of tolerance within and between communities."*³

What do we mean by play?

Play is not easily defined and can take many forms. It can be active, passive, solitary, independent, assisted, social, exploratory, educational or just for fun. It can happen indoors or outdoors. It can be structured, creative, messy, entirely facilitated by the imagination or can involve using the latest gadget. However, no matter what form play may take, what is important is that every child's right to play is respected and they are allowed the freedom to choose how and when they play.

What are 'high quality play opportunities'?

The varied forms of play means it is not easy to assess quality. High quality play opportunities may be structured or entirely child-led. They may be taking place in spaces specifically designed for play or in spaces in which play has not been planned. It may be taking place outwith the control or view of adults. Further, by its very nature 'high quality' provision will vary in different circumstances and locations. However, in terms of the provision and assessment of play opportunities and environments, in general we might expect 'high quality opportunities' to happen when:

- the principles of the UN Convention on the Rights of the Child are put into practice.
- the environment provides stimulus for play to flourish.
- if adults are involved, they work to established ethical and professional standards.⁴

¹ [Play Strategy for Scotland: our vision](#)

² Play for a Change, 2008; [Getting it Right for Play: an evidence base](#); [The Play Return](#); [Play is the Way](#)

³ [The Play Return](#)

⁴ [Play Strategy for Scotland: our action plan](#)

It is also increasingly understood that children need challenge and risk when they play, so a balance must be sought between keeping children safe from harm while also allowing them to engage in risky activities.⁵

2 What is a Play Sufficiency Assessment (PSA)?

The Play Sufficiency Assessment (PSA) is intended to provide an overall picture as to the provision and distribution of outdoor play opportunities for children across the totality of a local authority area. The statutory requirements for PSAs are laid out in the Town and Country Planning (Play Sufficiency Assessment) (Scotland) Regulations 2023. The regulations specify that all PSAs should provide statements as regards to the quality, quantity and accessibility of formal and informal outdoor play opportunities. The Regulations define children as any person under the age of 18 years.

Regulation 3(1) requires that PSAs take the form of a written report, incorporating maps as required. The Regulation provides flexibility for planning authorities to include information that is meaningful locally and to align the Assessment with other relevant areas of work such as the Open Space Audit and Strategy and local Play Strategy, however the PSA must feed into the Local Development Plan.

3 East Lothian's Play Sufficiency Assessment (PSA)

Assessment Process

Assessment of East Lothian's formal outdoor play spaces took place over a period of five weeks in March and April 2023. All Council owned and managed formal outdoor play spaces in East Lothian were assessed at least once. In total 120 formal play outdoor play spaces owned and managed by East Lothian Council were assessed by the Play Scotland assessment team. Five play spaces were also assessed by disabled children and their families with the support from specialist practitioners from East Lothian Play Association (ELPA) and Can Do. A further five formal outdoor play spaces were assessed by primary school children. The formal outdoor play spaces assessed by target groups were selected by the groups themselves based on the play spaces that they identified as being most important to their group members. Additionally, a desktop analysis of relevant assessments was carried out and engagement was undertaken with children and young people to assess the play sufficiency of informal play in East Lothian.

Play spaces that are not council owned or managed were not included in the assessment, as there is a lack of data about these spaces, and the Council has no jurisdiction to improve or make recommendations for change in these spaces. This is an area that might be considered again in future PSA reports.

⁵ [Managing Risk in Play Provision](#)



John Muir Country Park, natural imaginative play equipment

Key Findings

Key Positive Messages

East Lothian has 120 council owned and managed formal outdoor play spaces distributed across the entirety of the local authority area.

Most residents in the six largest settlements have at least one formal outdoor play space within a 5-minute walk.

East Lothian provides a wealth of informal outdoor play opportunities across a wide range of natural settings.

East Lothian's formal outdoor play spaces are clean and well maintained.

Most formal outdoor play spaces in East Lothian are attractive sites with natural features such as trees, bushes or shrubs.

Formal outdoor play spaces in East Lothian provide welcoming and safe play environments with a variety of general play opportunities.

Formal outdoor play spaces in East Lothian provide a good range of opportunities for physical play, particularly for younger children.

Formal outdoor play spaces in East Lothian offer a range of opportunities for younger children to take risks and experience adventurous play.

Formal outdoor play spaces in East Lothian provide a good range of opportunities for younger children to engage in social play.

East Lothian provides a good range of informal outdoor play opportunities in a range of natural and green spaces.

Key Development Messages

Formal outdoor play spaces in East Lothian currently offer limited opportunities for creative play.

Formal outdoor play spaces in East Lothian provide limited opportunities for children to play on or with a range of natural resources within the boundary of the play space.

Formal outdoor play spaces in East Lothian offer limited accessible play opportunities for disabled children and families.

Formal outdoor play spaces in East Lothian currently offer limited inclusive infrastructure to support inclusive play opportunities.

Key Recommendations

The PSA identified that there is an excellent quantity of play provision in East Lothian, and a good range of physical and risky play opportunities. The PSA identified important ways to strengthen the quality and accessibility of play opportunities in East Lothian where future funding opportunities would make this possible. The following recommendations are intended to provide focus for future investment in play provision.

The quality and range of play opportunities in East Lothian could be improved through:

- Increasing opportunities for sensory, creative and nature-based play
- Increasing all play opportunities for the 12-17 year old groups
- Increasing opportunities for calm, quiet play
- Increasing opportunities for social play
- Increasing ‘hang out’ spaces for the 12-17 year old age groups

Accessibility and inclusion of play opportunities in East Lothian could be improved through:

- Increasing the variety of play space surfaces
- Including a wider variety of inclusive fixed equipment
- Increasing opportunities for social, sensory, creative, and natural play
- Integrating inclusive play opportunities into the main play space
- Including features to support play for children with a wider variety of disabilities
- Improving safe, accessible routes into play spaces
- Embedding lived experience into play space design

Key Overall Message

The quantity of outdoor play spaces in East Lothian is good with most residents having access to formal or informal outdoor play spaces near to their homes. Any future improvements should therefore focus on strengthening the quality and accessibility of both formal and informal outdoor play opportunities.



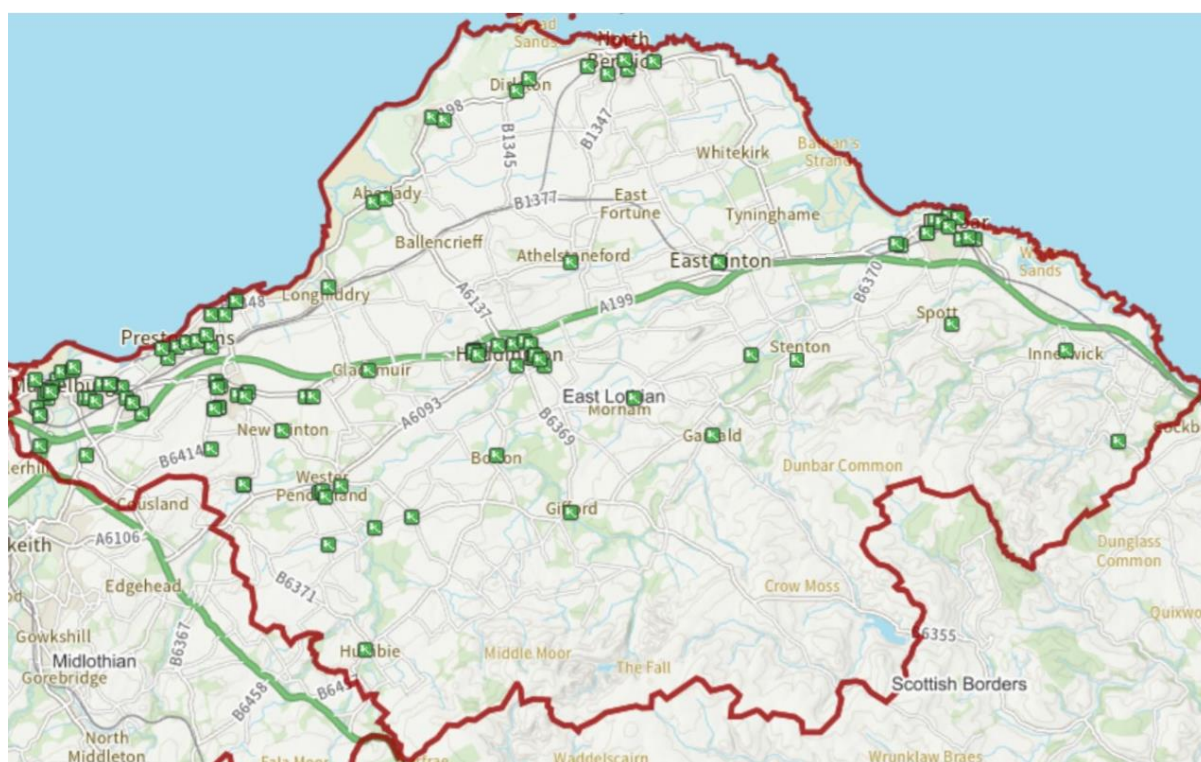
Ormiston Park imaginary play; King George V skate park and street art

4 Quantity and Quality of Play Spaces by Community Council Area

East Lothian has 120 Council owned or managed formal outdoor play spaces. Figure below illustrates the location of all these formal outdoor play spaces across the East Lothian authority area. There is a good distribution of formal outdoor play spaces across the local authority relative to the size of the settlements.

Every formal outdoor play space in East Lothian was assessed for the quality of play opportunities. This included assessment of the play environment and play space features via the Play Space Survey. The Play Opportunities Survey provided a detailed assessment of the types of play opportunities provided within each play space across four key age ranges (0-4, 5-11, 12-15, 16-17 years). Each individual piece of fixed equipment within each play space was included in the assessment. In total, 889 pieces of fixed equipment were assessed. On average there were seven pieces of fixed equipment per play space, although most play spaces have between four and ten pieces of equipment. Three play spaces have 20 or more pieces of fixed equipment.

Figure 1: East Lothian Authority Area Map Identifying All Council Managed Formal Outdoor Play Spaces



Section 4 of this report focuses on quantity and quality of formal outdoor spaces in all 20 Community Council areas:

- 4.1 Cockenzie and Port Seton Community Council Area
- 4.2 Dunbar Community Council Area
- 4.3 Dunpender Community Council Area (East Linton, Whittingehame)
- 4.4 East Lammermuir Community Council Area
- 4.5 Garvald and Morham Community Council Area
- 4.6 Gifford Community Council Area
- 4.7 Gullane Area Community Council Area
- 4.8 Haddington District Community Council Area
- 4.9 Humble, East and West Saltoun and Bolton Community Council Area
- 4.10 Longniddry Community Council Area
- 4.11 Macmerry and Gladsmuir Community Council Area
- 4.12 Musselburgh and Inveresk Community Council Area
- 4.13 North Berwick Community Council Area
- 4.14 Ormiston Community Council Area
- 4.15 Pencaitland Community Council Area
- 4.16 Prestonpans Community Council Area
- 4.17 Tranent and Elphinstone Community Council Area
- 4.18 Wallyford Community Council Area
- 4.19 West Barns Community Council Area
- 4.20 Whitecraig Community Council Area

4.1 Cockenzie and Port Seton Community Council Area

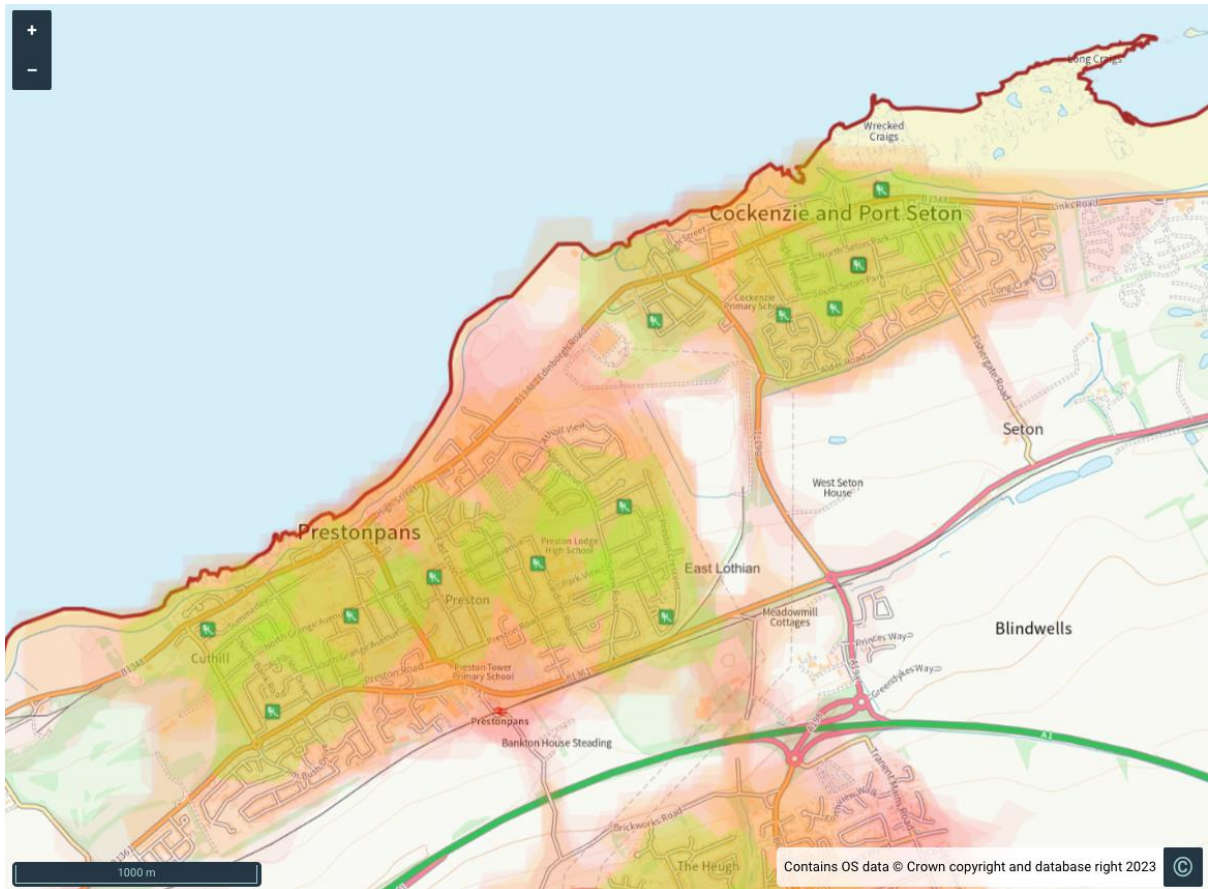
There are eight council-owned formal play spaces in Cockenzie and Port Seton. Two spaces are small neighbourhood play spaces, five are larger neighbourhood play spaces, and one space is a specific interest play space*. The play spaces provide formal play opportunities across the full 0-17 age range and are well maintained, clean, and free from noise and traffic pollution. The formal play spaces in Cockenzie and Port Seton provide a wide range of opportunities for physical, risky and social play, although opportunities for creative and nature-based play are more limited. King George V play space provides a wide range of play opportunities across the full age range and includes both a toddler area and skate park. The formal play spaces in Cockenzie and Port Seton currently offer minimal play opportunities for disabled children and families.

Formal Play Space	Play Space Type*	Play Equipment Target Age Range
Goolwa Park	Small neighbourhood play space	0-15 years
King George V Older Children Play Space	Larger neighbourhood play space	5-17 years
King George V Toddler Park	Larger neighbourhood play space	0-4 years
King George V Park Skate Park	Specific interest play space	5-17 years
Long Craigs	Small neighbourhood play space	0-4 years
Promenade	Larger neighbourhood play space	0-11 years
South Seton Park	Larger neighbourhood play space	0-4 years
Whin Park	Larger neighbourhood play space	0-15 years

* Defined as:

- Small neighbourhood play space is a play space with 0-3 pieces of formal play equipment.
- Larger neighbourhood play space is a play space with 4-13 pieces of formal play equipment.
- Specific interest play space is a play space with one large piece of equipment, for example a Multi-Use Game Area (MUGA), skate ramp, pump track or football pitch.

Figure 2: Prestonpans, Cockenzie and Port Seton Map of Walking Distances to Formal Outdoor Play Spaces



Green shading	5-minute walk
Orange shading	10-minute walk
Pink shading	15-minute walk

4.2 Dunbar Community Council Area

There are ten council-owned formal play spaces in Dunbar. One space is a small neighbourhood play space, six are larger neighbourhood play spaces, two are destination play spaces, and one space is a specific interest play space*. The play spaces provide formal play opportunities across the full 0-17 age range and are well maintained, clean, and free from noise and traffic pollution. The formal play spaces in Dunbar provide a wide range of opportunities for physical, risky and social play, although opportunities for creative and nature-based play are more limited. Play opportunities for older children are more limited, although Pine Street provides opportunities for the full age range, including a skate park and MUGA. Bleachingfield play space offers some accessible play opportunities for disabled children and families, although the range of accessible and inclusive play opportunities in Dunbar remains limited.

Formal Play Space	Play Space Type*	Play Equipment Target Age Range
Beachmont Place	Small neighbourhood play space	0-4 years
Bleachingfield	Larger neighbourhood play space	0-11 years
East Beach Dunbar	Larger neighbourhood play space	0-11 years
Lauderdale Park	Destination play space	0-15 years
Lochend Road Play Area	Destination play space	0-15 years
Parsons Pool	Larger neighbourhood play space	0-11 years
Pine Street	Larger neighbourhood play space	0-11 years
Pine Street Skate Park, MUGA and shelter	Specific interest play space	5-17 years
Queen's Place	Larger neighbourhood play space	5-15 years
Wingate Crescent	Larger neighbourhood play space	0-11 years

* Defined as:

- *Small neighbourhood play space is a play space with 0-3 pieces of formal play equipment.*
- *Larger neighbourhood play space is a play space with 4-13 pieces of formal play equipment.*
- *Destination play space is a play space with 14 or more pieces of formal play equipment.*
- *Specific interest play space is a play space with one large piece of equipment, for example a Multi-Use Game Area (MUGA), skate ramp, pump track or football pitch.*

Figure 3: Dunbar Map of Walking Distances to Formal Outdoor Play Spaces



Green shading	5-minute walk
Orange shading	10-minute walk
Pink shading	15-minute walk

4.3 Dunpender Community Council Area (East Linton, Whittingehame)

There are three council-owned formal play spaces in Dunpender. One space is a small neighbourhood play space, one is a larger neighbourhood play spaces, and one space is a specific interest play space*. The play spaces provide formal play opportunities across the full 0-17 age range and are well maintained, clean, and free from noise and traffic pollution. The formal play spaces in Dunpender provide a wide range of opportunities for physical, risky and social play, although opportunities for creative and nature-based play are more limited. East Linton play space provides a wide range of play opportunities across the full age range, including a skate park suitable for older age ranges. The skate park in East Linton is accessible for children with physical disabilities, although the range and type of play opportunities offered is limited. Overall, the range of accessible and inclusive play opportunities for disabled children and families in Dunpender is limited.

Formal Play Space	Play Space Type*	Play Equipment Target Age Range
East Linton Play Space	Larger neighbourhood play space	0-17 years
East Linton Skate Park	Specific interest play space	0-17 years
Whittingehame	Small neighbourhood play space	0-11 years

* Defined as:

- Small neighbourhood play space is a play space with 0-3 pieces of formal play equipment.
- Larger neighbourhood play space is a play space with 4-13 pieces of formal play equipment.
- Specific interest play space is a play space with one large piece of equipment, for example a Multi-Use Game Area (MUGA), skate ramp, pump track or football pitch.

Figure 4: Dunpender Community Council Formal Outdoor Play Spaces



4.4 East Lammermuir Community Council Area

There are four council-owned formal play spaces in East Lammermuir. All four spaces are larger neighbourhood play spaces*. The play spaces provide formal play opportunities across the full 0-17 age range and are well maintained, clean, and free from noise and traffic pollution. The formal play spaces in East Lammermuir provide a wide range of opportunities for physical, risky and social play, although opportunities for creative and nature-based play are more limited. The formal play spaces in East Lammermuir currently offer minimal play opportunities for disabled children and families.

Formal Play Space	Play Space Type*	Play Equipment Target Age Range
Innerwick Play Area	Larger neighbourhood play space	0-17 years
Oldhamstocks	Larger neighbourhood play space	0-11 years
Spott	Larger neighbourhood play space	0-11 years
Stenton	Larger neighbourhood play space	0-17 years

* Larger neighbourhood play space is defined as a play space with 4-13 pieces of formal play equipment.

Figure 5: East Lammermuir Community Council Formal Outdoor Play Spaces



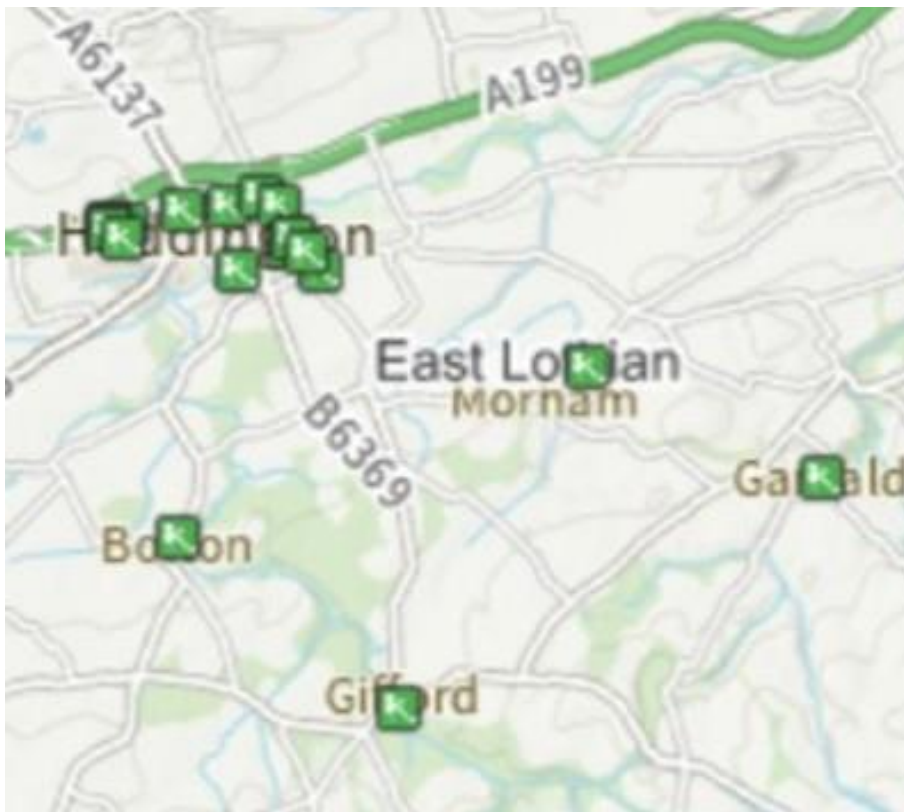
4.5 Garvald and Morham Community Council Area

There are two council-owned formal play spaces in Garvald and Morham. Both spaces are larger neighbourhood play spaces*. The play spaces provide formal play opportunities across the full 0-17 age range and are well maintained, clean, and free from noise and traffic pollution. The formal play spaces in Garvald and Morham provide a wide range of opportunities for physical, risky, social and nature-based play, although opportunities for creative play are more limited. Neither play space offers play opportunities for disabled children and families.

Formal Play Space	Play Space Type*	Play Equipment Target Age Range
Garvald Play Area	Larger neighbourhood play space	0-17 years
Morham Play Area	Larger neighbourhood play space	5-17 years

* Larger neighbourhood play space is defined as a play space with 4-13 pieces of formal play equipment.

Figure 6: Garvald and Morham Community Council Formal Outdoor Play Spaces



4.6 Gifford Community Council Area

There are two council-owned formal play spaces in Gifford. One space is a larger neighbourhood play space and the other a destination play space*. The play spaces provide formal play opportunities across the full 0-17 age range and are well maintained, clean, and free from noise and traffic pollution. The formal play spaces in Gifford provide a wide range of opportunities for physical, risky, social and nature-based play, although opportunities for creative play are more limited. Neither play space offers play opportunities for disabled children and families.

Formal Play Space	Play Space Type*	Play Equipment Target Age Range
Gifford Play Park	Destination play space	0-17 years
Walden Terrace	Larger neighbourhood play space	0-17 years

* Larger neighbourhood play space is defined as a play space with 4-13 pieces of formal play equipment.

Figure 7: Gifford Community Council Formal Outdoor Play Spaces



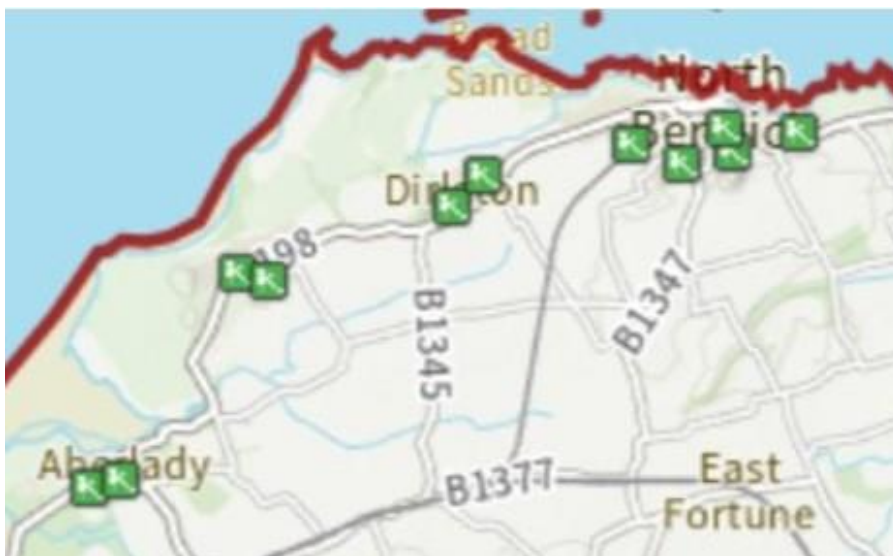
4.7 Gullane Area Community Council Area

There are six council-owned formal play spaces in the Gullane Area. All six spaces are larger neighbourhood play spaces*. The play spaces provide formal play opportunities across the full 0-17 age range and are well maintained, clean, and free from noise and traffic pollution. The formal play spaces in the Gullane Area provide a wide range of opportunities for physical, risky, social and nature-based play, although opportunities for creative play are more limited. The play opportunities offered in Yellowcraig play space include large, unusual pieces of equipment suitable for adventurous play. The formal play spaces in the Gullane Area currently offer minimal play opportunities for disabled children and families.

Formal Play Space	Play Space Type*	Play Equipment Target Age Range
Aberlady Pleasance	Larger neighbourhood play space	0-11 years
Dirleton	Larger neighbourhood play space	0-17 years
Goose Green, Gullane	Larger neighbourhood play space	0-11 years
Luffness Court Aberlady	Larger neighbourhood play space	0-11 years
Muirfield	Larger neighbourhood play space	0-17 years
Yellowcraig	Larger neighbourhood play space	0-17 years

* Larger neighbourhood play space is defined as a play space with 4-13 pieces of formal play equipment.

Figure 8: Gullane Community Council Formal Outdoor Play Spaces



4.8 Haddington District Community Council Area

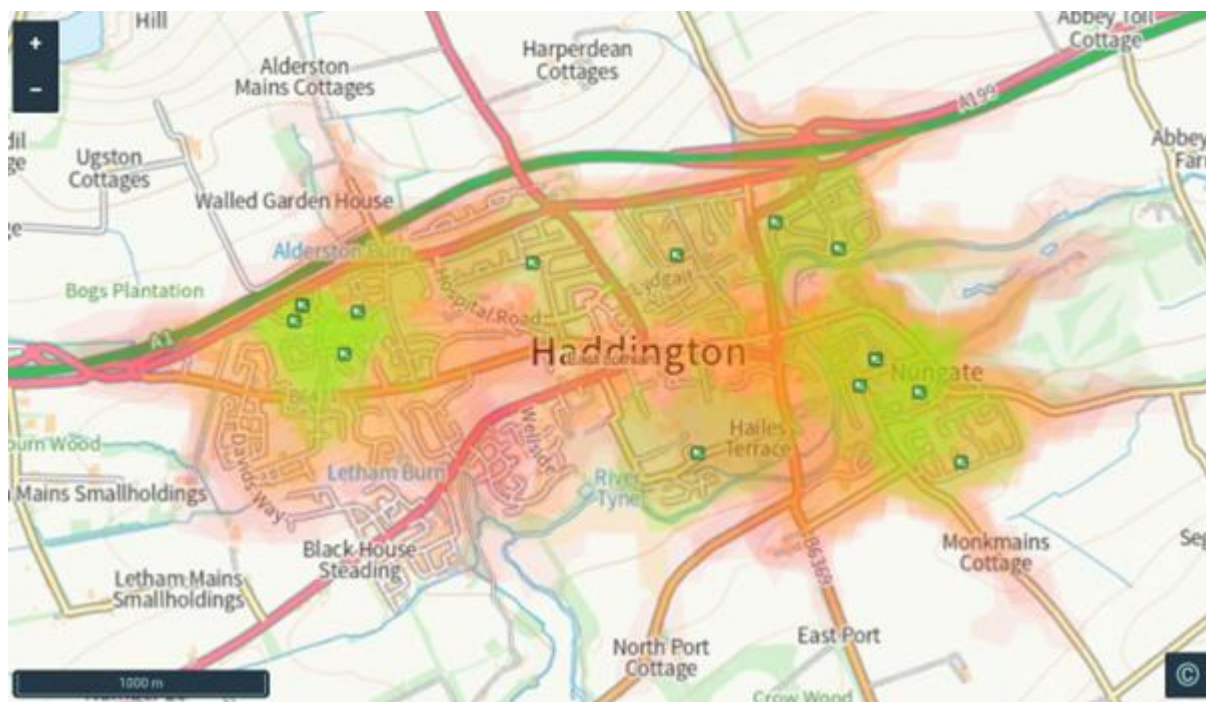
There are sixteen council-owned formal play spaces in the Haddington District. Six spaces are small neighbourhood play spaces, seven are larger neighbourhood play spaces, two are destination play spaces, and one space is a specific interest play space*. The play spaces provide formal play opportunities across the full 0-17 age range and are well maintained, clean, and free from noise and traffic pollution. The formal play spaces in the Haddington District provide a wide range of opportunities for physical and risky play. Some formal play spaces offer opportunities for social and nature-based play, although opportunities for creative play are more limited. Whittingeham Drive provides opportunities specifically for older children through provision of a skate park. The formal play spaces in the Haddington District currently offer minimal play opportunities for disabled children and families, with only Neilson Park offering any accessible play equipment.

Formal Play Space	Play Space Type*	Play Equipment Target Age Range
Alderston Meadows	Small neighbourhood play space	0-4 years
Artillery Park	Small neighbourhood play space	0-4 years
Athelstaneford	Larger neighbourhood play space	0-17 years
Davidson Terrace	Larger neighbourhood play space	0-17 years
Gateside (toddler area 1)	Small neighbourhood play space	0-4 years
Gateside (toddler area 2)	Small neighbourhood play space	0-4 years
Gateside (toddler area 3)	Small neighbourhood play space	0-4 years
Herdmanflatt	Larger neighbourhood play space	0-17 years
Monksmains	Destination play space	0-17 years
Neilson Park	Destination play space	0-17 years
Nungate 1	Larger neighbourhood play space	0-11 years
Nungate 2/Lynn Avenue	Larger neighbourhood play space	5-17 years
Riverside Drive 1	Larger neighbourhood play space	0-15 years
Riverside Drive 2	Larger neighbourhood play space	0-11 years
Whittingeham Drive	Small neighbourhood play space	0-17 years
Whittingeham Drive Skatepark	Specific interest play space	5-17 years

* Defined as:

- Small neighbourhood play space is a play space with 0-3 pieces of formal play equipment.
- Larger neighbourhood play space is a play space with 4-13 pieces of formal play equipment.
- Destination play space is a play space with 14 or more pieces of formal play equipment.
- Specific interest play space is a play space with one large piece of equipment, for example a Multi-Use Game Area (MUGA), skate ramp, pump track or football pitch.

Figure 9: Haddington Map of Walking Distances to Formal Outdoor Play Spaces



Green shading	5-minute walk
Orange shading	10-minute walk
Pink shading	15-minute walk

4.9 Humbie, East and West Saltoun and Bolton Community Council Area

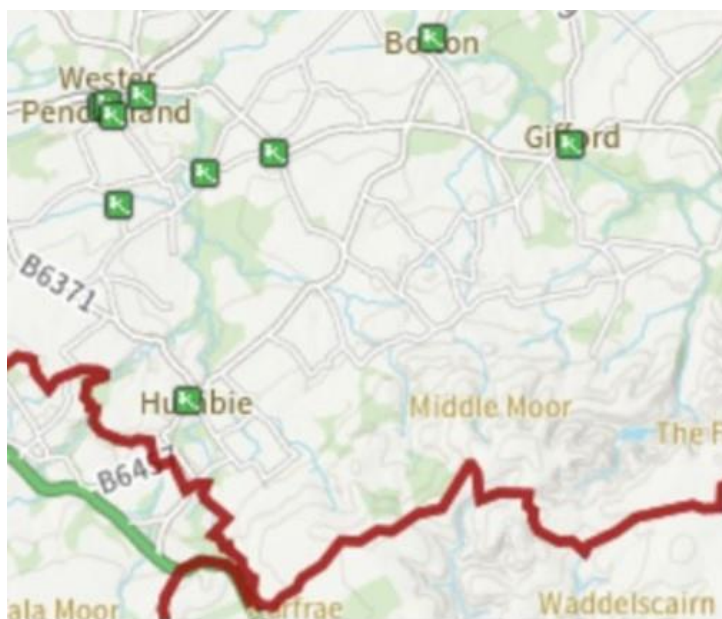
There are four council-owned formal play spaces in the Humbie, East and West Saltoun and Bolton area. Three spaces are larger neighbourhood play spaces* and one space is a football and playing field. The play spaces provide formal play opportunities across the 0-15 age range, although play opportunities for older children are limited. Most spaces are well maintained, clean, and free from noise and traffic pollution. The formal play spaces in the Humbie, East and West Saltoun and Bolton area provide a wide range of opportunities for physical, risky and social play for younger age groups, although opportunities for creative play and play for older children are more limited. The formal play spaces in the Humbie, East and West Saltoun and Bolton area currently offer minimal play opportunities for disabled children and families.

Formal Play Space	Play Space Type*	Play Equipment Target Age Range
Bolton	Larger neighbourhood play space	0-11 years
East Saltoun	Larger neighbourhood play space	0-15 years
Humbie Playing Field	Specific interest play space	5-17 years
West Saltoun	Larger neighbourhood play space	0-15 years

* Defined as:

- Larger neighbourhood play space is a play space with 4-13 pieces of formal play equipment.
- Specific interest play space is a play space with one large piece of equipment, for example a Multi-Use Game Area (MUGA), skate ramp, pump track or football pitch.

Figure 10: Humbie Community Council Formal Outdoor Play Spaces



4.10 Longniddry Community Council Area

There is one council-owned formal play space in the Longniddry area. The space is a larger neighbourhood play space* with ten pieces of play equipment. The play space provides formal play opportunities across the full 0-17 age range and is well maintained, clean, and free from noise and traffic pollution. The formal play space in Longniddry provides a range of opportunities for physical, risky and social play, although the opportunities for nature-based and creative play are more limited. The formal play space in Longniddry currently offers minimal play opportunities for disabled children and families.

Formal Play Space	Play Space Type*	Play Equipment Target Age Range
Longniddry	Larger neighbourhood play space	0-17 years

* Larger neighbourhood play space is defined as a play space with 4-13 pieces of formal play equipment.

Figure 11: Longniddry Community Council Formal Outdoor Play Spaces



4.11 Macmerry and Gladsmuir Community Council Area

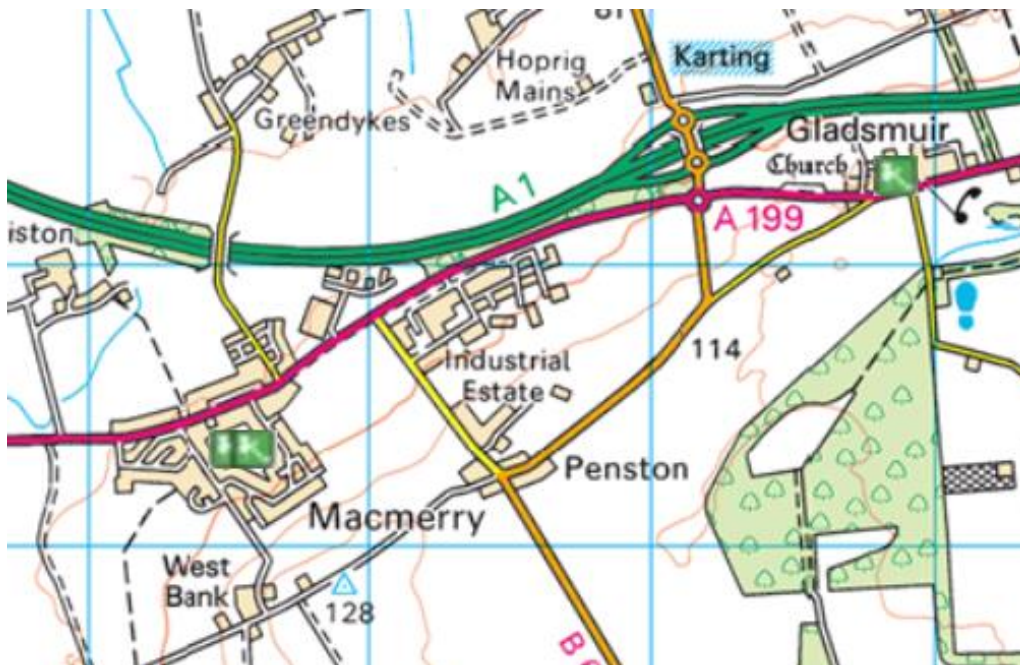
There are three council-owned formal play spaces in the Macmerry and Gladsmuir area. Two spaces are larger neighbourhood play spaces and one space is a destination play space*. The play spaces provide formal play opportunities across the 0-17 age range. Most spaces are well maintained, clean, and free from noise and traffic pollution. The formal play spaces in the Macmerry and Gladsmuir area provide a wide range of opportunities for physical, risky and social play, although opportunities for creative and nature-based play are more limited. The formal play spaces in the Macmerry and Gladsmuir area currently offer minimal play opportunities for disabled children and families.

Formal Play Space	Play Space Type*	Play Equipment Target Age Range
Brierbush Road	Larger neighbourhood play space	5-17 years
Gladsmuir	Larger neighbourhood play space	0-17 years
Macmerry Play Area	Destination play space	0-17 years

* Defined as:

- Larger neighbourhood play space is a play space with 4-13 pieces of formal play equipment.
- Destination play space is a play space with 14 or more pieces of formal play equipment.

Figure 12: Macmerry and Gladsmuir Community Council Formal Outdoor Play Spaces



4.12 Musselburgh and Inveresk Community Council Area

There are twenty-one council-owned formal play spaces in Musselburgh and Inveresk. One space is a small neighbourhood play space, fourteen are larger neighbourhood play spaces, four are destination play spaces, and two spaces are specific interest play spaces*. The play spaces provide formal play opportunities across the full 0-17 age range and most spaces are well maintained, clean, and free from noise and traffic pollution. The formal play spaces in the Musselburgh and Inveresk area provide a wide range of opportunities for physical and risky play, although there are fewer opportunities for older age groups. Some formal play spaces offer opportunities for social play, although opportunities for nature-based and creative play are more limited. The formal play spaces in the Musselburgh and Inveresk area currently offer minimal play opportunities for disabled children and families.

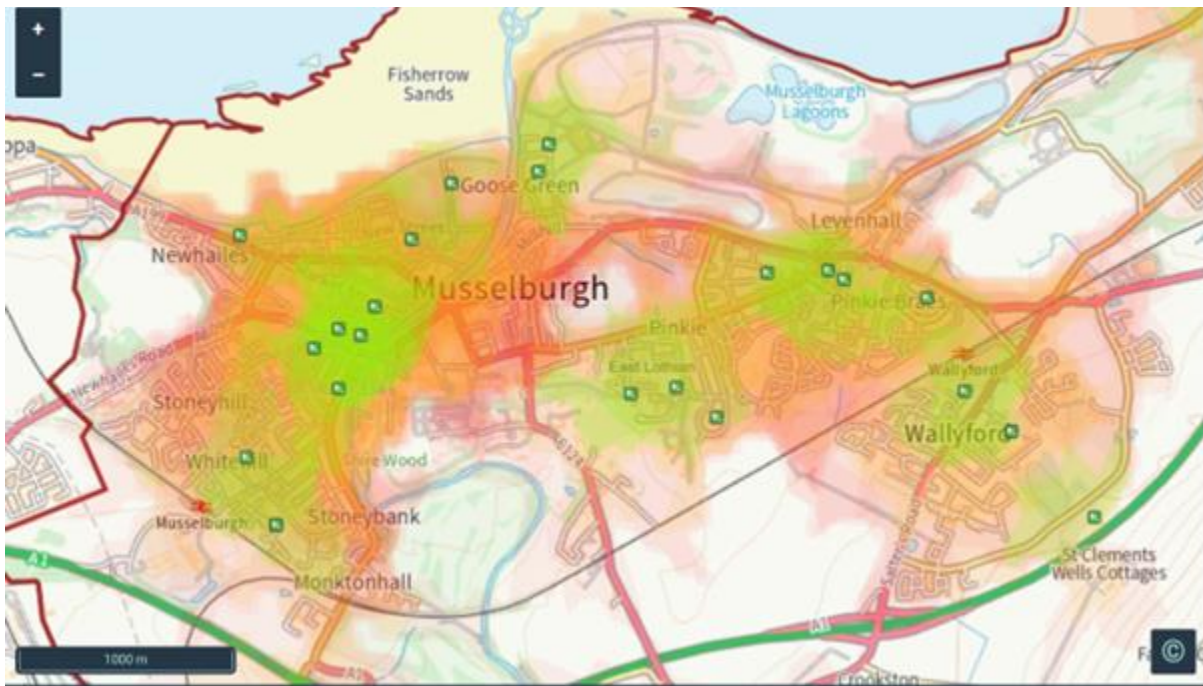
Formal Play Space	Play Space Type*	Play Equipment Target Age Range
Balcares Road / Old Course Gate	Larger neighbourhood play space	0-11 years
Bellfield Location 1	Small neighbourhood play space	0-4 years
Bellfield Location 2	Larger neighbourhood play space	0-15 years
Edenhall	Destination play space	0-15 years
Eskview	Larger neighbourhood play space	0-11 years
Fisherrow	Destination play space	0-17 years
Fisherrow Skate Park	Specific interest play space	5-17 years
Goose Green No. 1	Larger neighbourhood play space	0-15 years
Haugh Park	Destination play space	0-17 years
Levenhall Play Area	Larger neighbourhood play space	0-11 years
Lewisvale Park, Toddlers' Area ⁶	Larger neighbourhood play space	0-11 years
Macbeth Moir Play Park	Larger neighbourhood play space	0-11 years
Market Street	Larger neighbourhood play space	0-4 years
Mayfield Park	Larger neighbourhood play space	0-15 years
Mayfield Park Football Pitch	Specific interest play space	0-17 years
Old Craighall	Larger neighbourhood play space	0-17 years
Pinkiehill	Destination play space	0-17 years
Quayside Park Area	Larger neighbourhood play space	0-11 years
St Ninians Play Area	Larger neighbourhood play space	0-15 years
Whitehill	Larger neighbourhood play space	0-11 years
Windsor Park	Larger neighbourhood play space	0-11 years

⁶ Please note that the new Lewisvale Park play area for older children and teens had not been constructed when this survey took place, so is not included here.

* Defined as:

- Small neighbourhood play space is a play space with 0-3 pieces of formal play equipment.
- Larger neighbourhood play space is a play space with 4-13 pieces of formal play equipment.
- Destination play space is a play space with 14 or more pieces of formal play equipment.
- Specific interest play space is a play space with one large piece of equipment, for example a Multi-Use Game Area (MUGA), skate ramp, pump track or football pitch.

Figure 13: Musselburgh and Inveresk Map of Walking Distances to Formal Outdoor Play Spaces



Green shading	5-minute walk
Orange shading	10-minute walk
Pink shading	15-minute walk

4.13 North Berwick Community Council Area

There are six council-owned formal play spaces in the North Berwick area. Four spaces are larger neighbourhood play spaces and two spaces are destination play spaces*. The play spaces provide formal play opportunities across the 0-17 age range. Most spaces are well maintained, clean, and free from noise and traffic pollution. The formal play spaces in the North Berwick area provide a wide range of opportunities for physical, risky and social play, although opportunities for creative and nature-based play are more limited. The formal play spaces in the North Berwick area currently offer minimal play opportunities for disabled children and families.

Formal Play Space	Play Space Type*	Play Equipment Target Age Range
Lochbridge Road	Larger neighbourhood play space	0-17 years
Lodge Grounds	Destination play space	0-17 years
Mains Farm/Wotherspoon Green	Larger neighbourhood play space	0-17 years
Smileyknowles Court	Larger neighbourhood play space	0-11 years
Recreation Park	Destination play space	0-17 years
Rhodes Park	Larger neighbourhood play space	0-11 years

* *Defined as:*

- *Larger neighbourhood play space is a play space with 4-13 pieces of formal play equipment.*
- *Destination play space is a play space with 14 or more pieces of formal play equipment.*

Figure 14: North Berwick Map of Walking Distances to Formal Outdoor Play Spaces



Green shading	5-minute walk
Orange shading	10-minute walk
Pink shading	15-minute walk

4.14 Ormiston Community Council Area

There is one council-owned formal play space in the Ormiston area that is divided into three separate areas: an area for younger children, for older children, and a pump track. The three areas form a destination play space* and provide formal play opportunities across the full 0-17 age range. The play space is well maintained, clean, and free from noise and traffic pollution. Ormiston play space provides a wide range of opportunities for physical, risky, social play, nature-based and creative play. The space offers some accessible play opportunities for disabled children and families, including a communication board and buddy bench, although the range of accessible equipment is limited.

Formal Play Space	Play Space Type*	Play Equipment Target Age Range
Ormiston - Younger Children's Area	Destination play space	0-15 years
Ormiston - Older Children's Area	Larger neighbourhood play space	5-17 years
Ormiston - Pump Track	Specific interest play space	5-17 years

* Defined as:

- Larger neighbourhood play space is a play space with 4-13 pieces of formal play equipment.
- Destination play space is a play space with 14 or more pieces of formal play equipment.
- Specific interest play space is a play space with one large piece of equipment, for example a Multi-Use Game Area (MUGA), skate ramp, pump track or football pitch.

Figure 15: Ormiston Community Council Formal Outdoor Play Spaces



4.15 Pencaitland Community Council Area

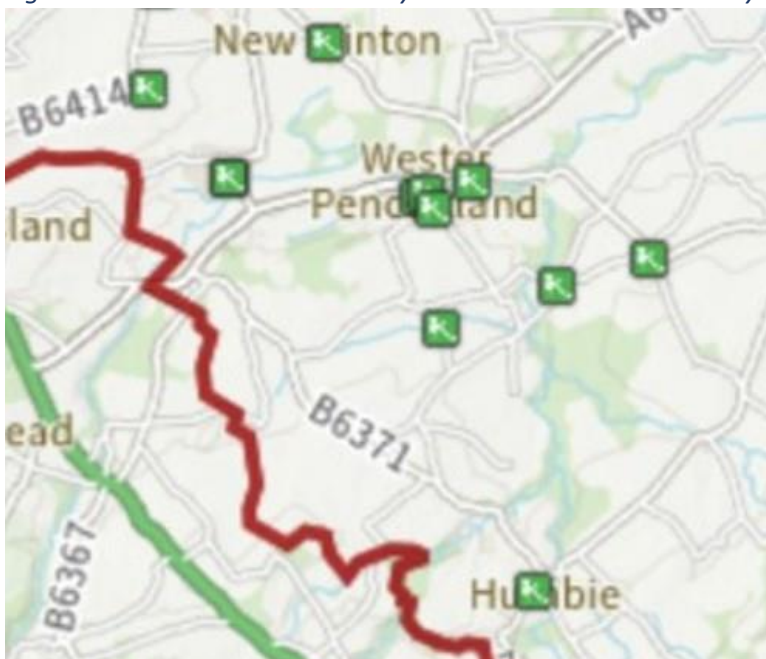
There are six council-owned formal play spaces in the Pencaitland area. Four spaces are larger neighbourhood play spaces, two are destination play spaces and one is a small neighbourhood play space*. The play spaces provide formal play opportunities across the 0-17 age range. The play spaces are well maintained, clean, and free from noise and traffic pollution. The formal play spaces in the Pencaitland area provide a wide range of opportunities for physical and risky play, although opportunities for social, creative and nature-based play are more limited. The formal play spaces in the Pencaitland area currently offer minimal play opportunities for disabled children and families, with only Pencaitland Park including an accessible roundabout.

Formal Play Space	Play Space Type*	Play Equipment Target Age Range
Glenkinchie	Small neighbourhood play space	0-17 years
Lamberton Court	Larger neighbourhood play space	0-11 years
New Winton	Larger neighbourhood play space	0-11 years
Pencaitland Park	Destination play space	0-17 years
Trevelyan Crescent	Larger neighbourhood play space	0-11 years
Woodhall Road	Larger neighbourhood play space	0-17 years

* Defined as:

- Small neighbourhood play space is a play space with 0-3 pieces of formal play equipment.
- Larger neighbourhood play space is a play space with 4-13 pieces of formal play equipment.
- Destination play space is a play space with 14 or more pieces of formal play equipment.

Figure 16: Pencaitland Community Council Formal Outdoor Play Spaces



4.16 Prestonpans Community Council Area

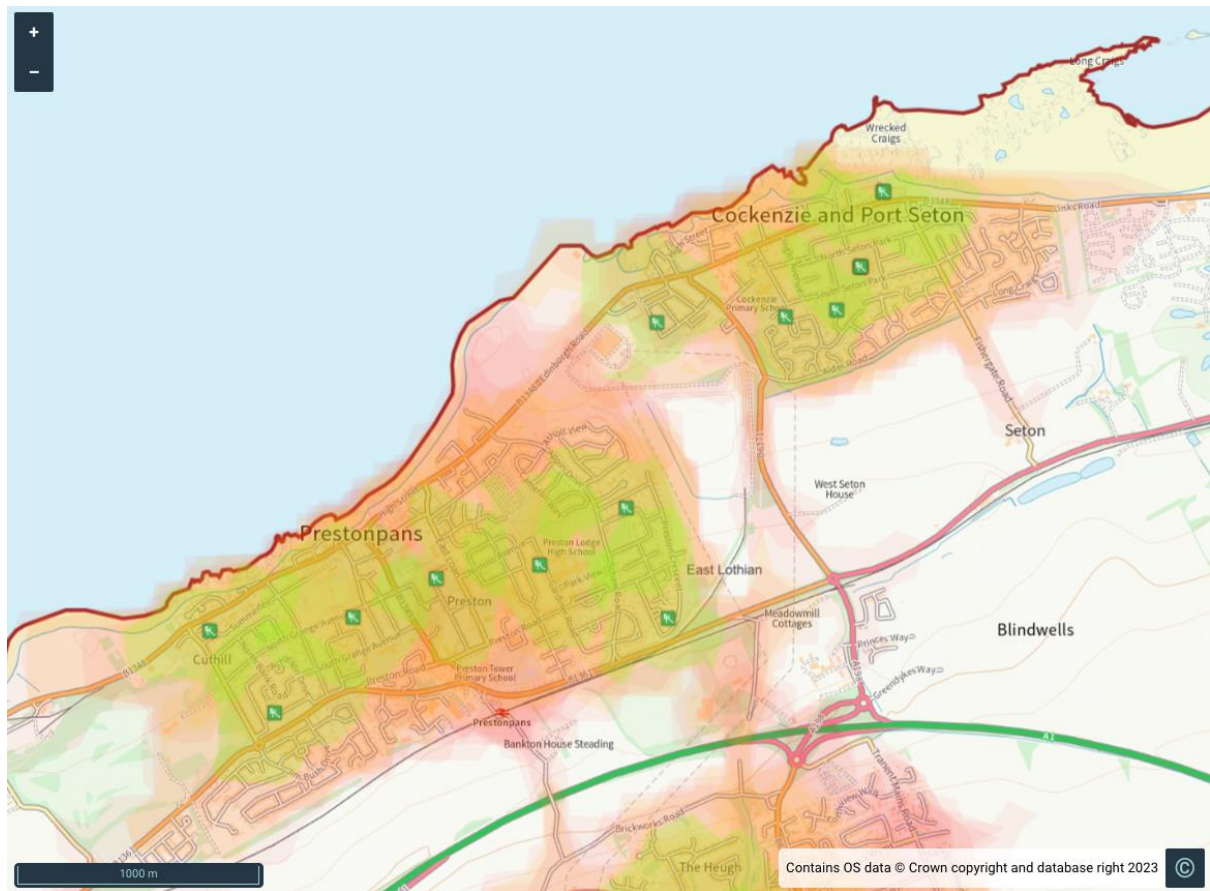
There are seven council-owned formal play spaces in the Prestonpans area. One play space is a small neighbourhood play space, four spaces are larger neighbourhood play spaces, two are destination play spaces*. The play spaces provide formal play opportunities across the 0-17 age range. The play spaces are well maintained, clean, and free from noise and traffic pollution. The formal play spaces in the Prestonpans area provide a wide range of opportunities for physical and risky play, and a range of opportunities for social and nature-based play. The opportunities for creative play are more limited. The play space in Cuthill Park has a particularly good range of play opportunities, including an area dedicated to nature-based play. The formal play spaces in the Prestonpans area currently offer minimal play opportunities for disabled children and families.

Formal Play Space	Play Space Type*	Play Equipment Target Age Range
Cemetery Park	Destination play space	0-17 years
Cuthill Park	Destination play space	0-17 years
Middleshot Square	Larger neighbourhood play space	0-4 years
Penny Pit Park	Small neighbourhood play space	5-17 years
Preston Crescent	Larger neighbourhood play space	0-17 years
Wilson Avenue	Larger neighbourhood play space	0-11 years
Wrigley Terrace (Drachrig Play Park)	Larger neighbourhood play space	0-17 years

* Defined as:

- *Small neighbourhood play space is a play space with 0-3 pieces of formal play equipment.*
- *Larger neighbourhood play space is a play space with 4-13 pieces of formal play equipment.*
- *Destination play space is a play space with 14 or more pieces of formal play equipment.*

Figure 17: Prestonpans Map of Walking Distances to Formal Outdoor Play Spaces



Green shading	5-minute walk
Orange shading	10-minute walk
Pink shading	15-minute walk

4.17 Tranent and Elphinstone Community Council Area

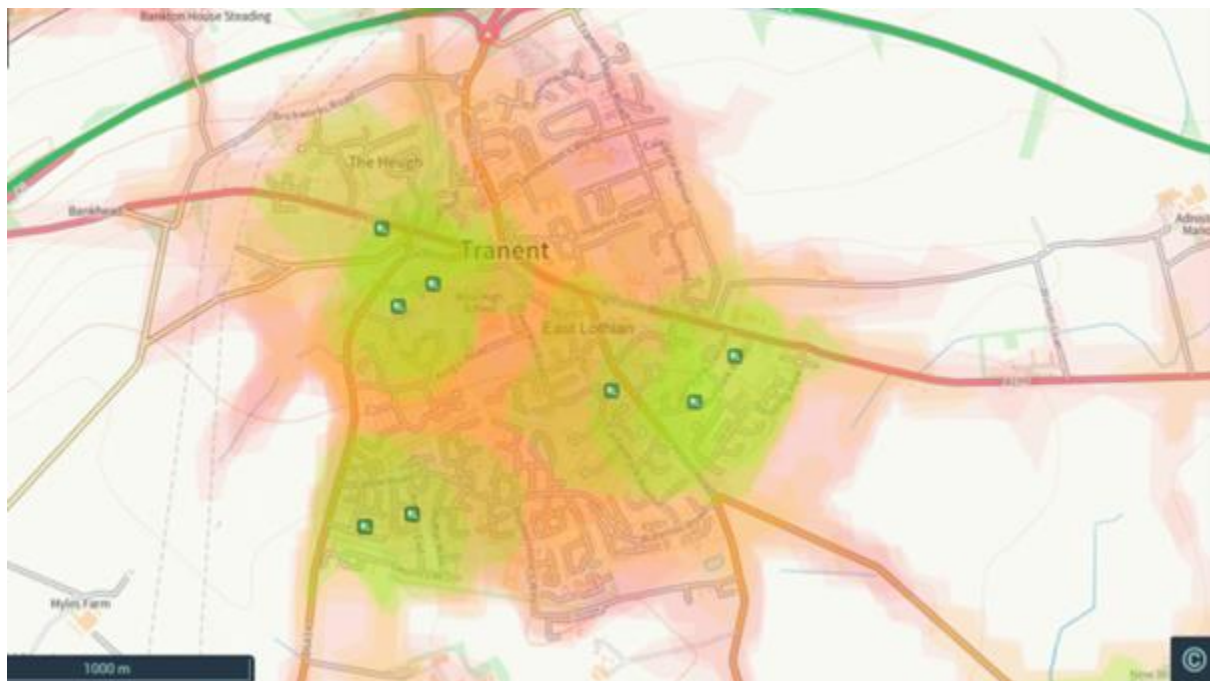
There are eleven council-owned formal play spaces in the Tranent and Elphinstone area. There are three small neighbourhood play spaces, six larger neighbourhood play spaces, one destination play space, and one specific interest space*. The play spaces provide formal play opportunities across the 0-17 age range. The play spaces are well maintained, clean, and free from noise and traffic pollution. The formal play spaces in the Tranent and Elphinstone area provide a wide range of opportunities for physical and risky play, and a range of opportunities for social play. The opportunities for creative and nature-based play are more limited. There is an inclusive roundabout in Polson Park, but overall formal play spaces in the Tranent and Elphinstone area currently offer limited play opportunities for disabled children and families.

Formal Play Space	Play Space Type*	Play Equipment Target Age Range
Blawearie Park, Tranent	Larger neighbourhood play space	0-17 years
Elphinstone, Buxley Road	Larger neighbourhood play space	0-11 years
Farriers Way, Tranent	Small neighbourhood play space	0-4 years
Farriers Way, Tranent	Small neighbourhood play space	0-11 years
Farriers Way, Tranent	Small neighbourhood play space	5-11 years
Farriers Way, Tranent	Larger neighbourhood play space	0-11 years
Meeting House Drive, Tranent	Specific interest play space	0-17 years
Muir Park Play Area	Larger neighbourhood play space	0-17 years
Ormiston Road, Tranent	Larger neighbourhood play space	0-17 years
Polson Park, Tranent	Destination play space	0-17 years
Windygoul	Larger neighbourhood play space	0-17 years

* Defined as:

- *Small neighbourhood play space is a play space with 0-3 pieces of formal play equipment.*
- *Larger neighbourhood play space is a play space with 4-13 pieces of formal play equipment.*
- *Destination play space is a play space with 14 or more pieces of formal play equipment.*
- *Specific interest play space is a play space with one large piece of equipment, for example a Multi-Use Game Area (MUGA), skate ramp, pump track or football pitch.*

Figure 18: Tranent Map of Walking Distances to Formal Outdoor Play Spaces



Green shading	5-minute walk
Orange shading	10-minute walk
Pink shading	15-minute walk

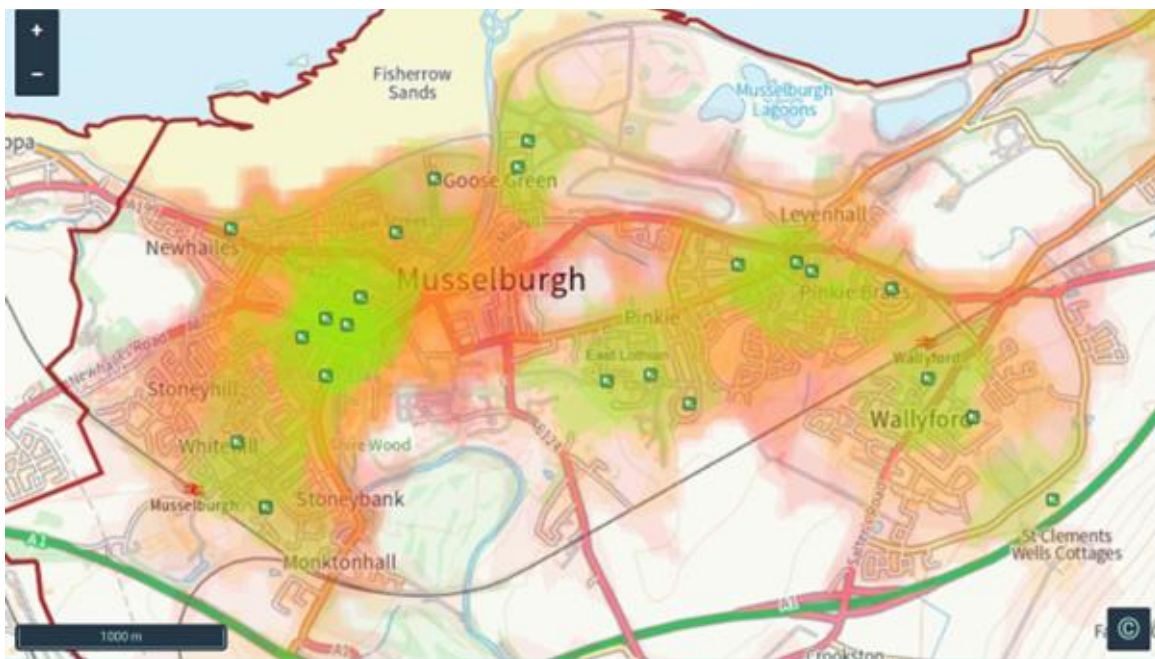
4.18 Wallyford Community Council Area

There are three council-owned formal play spaces in the Wallyford area. All three areas are larger neighbourhood play spaces* and provide formal play opportunities across the full 0-17 age range. The play spaces are well maintained, clean, and free from noise and traffic pollution. The formal play spaces in the Wallyford area provide a wide range of opportunities for physical and risky play, and a range of opportunities for social play. Opportunities for nature-based and creative play are more limited. There is an inclusive roundabout in Wallyford New Park, but overall formal play spaces in the Wallyford area currently offer limited play opportunities for disabled children and families.

Formal Play Space	Play Space Type*	Play Equipment Target Age Range
Wallyford New	Larger neighbourhood play space	0-15 years
Wallyford Park	Larger neighbourhood play space	0-17 years
Wallyford Community Centre and MUGA	Larger neighbourhood play space	0-17 years

* Larger neighbourhood play space is defined as a play space with 4-13 pieces of formal play equipment.

Figure 19: Musselburgh and Wallyford Map of Walking Distances to Formal Outdoor Play Spaces



Green shading	5-minute walk
Orange shading	10-minute walk
Pink shading	15-minute walk

4.19 West Barns Community Council Area

There are three council-owned formal play spaces in the West Barns area. Two areas are larger neighbourhood play spaces and one is a destination play space*. The formal play spaces in West Barns offer play opportunities across the full 0-17 age range. The play spaces are well maintained, clean, and free from noise and traffic pollution. The formal play spaces in the West Barns area provide a wide range of opportunities for physical and risky play, and a range of opportunities for social and nature-based play. Opportunities for creative play are more limited. John Muir Country Park offers a wide range of physical and imaginary play opportunities in a natural environment. The formal play spaces in the West Barns area currently offer limited play opportunities for disabled children and families.

Formal Play Space	Play Space Type*	Play Equipment Target Age Range
John Muir Country Park	Destination play space	0-17 years
School Brae, West Barns	Larger neighbourhood play space	0-17 years
Springfield, West Barns	Larger neighbourhood play space	0-11 years

*Defined as:

- Larger neighbourhood play space is a play space with 4-13 pieces of formal play equipment.
- Destination play space is a play space with 14 or more pieces of formal play equipment.

Figure 20: West Barns Map of Walking Distances to Formal Outdoor Play Spaces



Green shading	5-minute walk
Orange shading	10-minute walk
Pink shading	15-minute walk

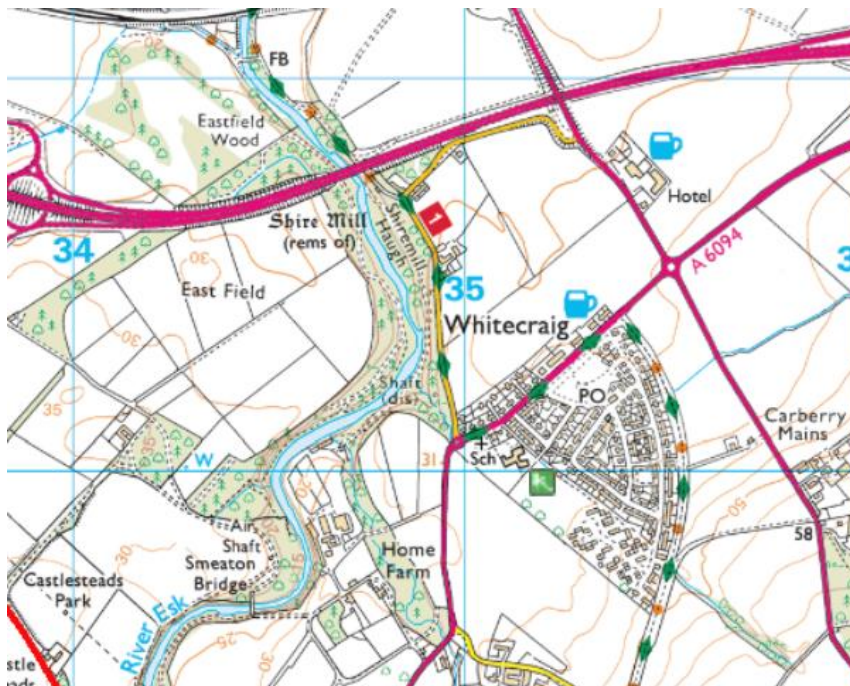
4.20 Whitecraig Community Council Area

There is one council-owned formal play space in the Whitecraig area. The space is a larger neighbourhood play space* with ten pieces of fixed play equipment including a MUGA. The play space provides formal play opportunities across the full 0-17 age range and is well maintained, clean, and free from noise and traffic pollution. The formal play space in Whitecraig provides a range of opportunities for physical play, and some opportunities for risky and social play. Opportunities for nature-based and creative play are more limited. The MUGA is accessible, but the formal play space in Whitecraig currently offers minimal play opportunities for disabled children and families.

Formal Play Space	Play Space Type*	Play Equipment Target Age Range
Whitecraig Play Space and MUGA	Larger neighbourhood play space	0-17 years

* Larger neighbourhood play space is defined as a play space with 4-13 pieces of formal play equipment.

Figure 21: Whitecraig Community Council Formal Outdoor Play Spaces



Public Consultation on this document starts on

2nd October and closes on **13th November 2023**

You can access an on-line survey and leave your comments at

[East Lothian Council - Citizen Space \(eastlothianconsultations.co.uk\)](http://eastlothianconsultations.co.uk)

or you can email us ldp@eastlothian.gov.uk