

## **SUPPORTING DOCUMENT 1:**

### **Consultation and Engagement:**

#### **Draft East Lothian Climate Change Strategy 2019–24**

##### **1. Introduction**

East Lothian Council is committed to ensuring that local communities and other key stakeholders have a genuine role to play in developing the Climate Change Strategy 2019–24. This is important to ensure the Strategy reflects local aspirations and issues, and enable as many people as possible across the county to engage with preparation of the Strategy.

A key aim of the Strategy is to encourage and facilitate behaviour change to mitigate against climate change amongst an aware and engaged population. Awareness-raising and public engagement are critical to the Strategy, as the Council will be able to achieve more by working in partnership with communities, organisations, businesses and individuals.

This paper sets out wide range of consultation and engagement undertaken with local communities and other key stakeholders during development of the Draft Strategy.

##### **2. Background**

**The Climate Change (Scotland) Act 2009** creates a statutory framework for greenhouse gas emissions reductions and requires public bodies to help deliver the Scottish Climate Change Adaptation Programme. The Scottish Government's **Climate Change Plan 2018–2032** sets out the pathway Scotland will take to achieve a low carbon economy, while helping to deliver sustainable economic growth and secure the wider benefits to a greener, healthier and fairer Scotland in 2032. It sets out a clear expectation that Scotland's public bodies will lead by example.

As a public body, East Lothian Council is expected to lead by example in reducing greenhouse gas emissions and to successfully deliver the Climate Change Plan locally by influencing and enabling positive behaviours, driving change, and acting as an exemplar of climate action and low carbon innovation in the transition to a growing, sustainable and inclusive low carbon economy. This can be achieved by engaging and working in partnership with local communities, businesses, organisations and individuals. Accordingly, a wide range of methods required to be used to ensure that everyone had the opportunity to be involved in developing the Strategy.

Local authorities must also take cognisance of statutory public sector equality duties, set out in the UK Government's **Equality Act 2010**. Public authorities must involve, consult and engage with communities as widely as possible, with *Principles of Inclusive Communication* considered a useful reference: <http://www.gov.scot/Publications/2011/09/14082209/17>

**National Standards for Community Engagement** were launched in 2005. The Standards are good practice principles, designed to inform and support community engagement and user involvement. Since then, the Scottish Government has made an explicit commitment to support and develop community empowerment, through a range of actions including the

passing of the **Community Empowerment (Scotland) Act 2015**. Work in relation to the Act included a review and updating of the Standards in 2015/16. The review aimed to reflect developing policy and legislation with regard to community empowerment across Scotland and to build on the range of growing practice.

The Council is committed to ensuring compliance with good practice and improving community engagement and the National Standards provided a framework for consultation and engagement on the Climate Change Strategy 2019-24 as follows:

1. **INVOLVEMENT:** We will identify and involve the people and organisations who have an interest in the Strategy;
2. **SUPPORT:** We will identify and overcome any barriers to consultation and involvement in relation to developing the Strategy;
3. **PLANNING:** We will gather evidence of the needs and available resources and use this evidence to agree the purpose, scope and timescale of the engagement and the actions to be taken;
4. **METHODS:** We will agree and use methods of consultation and engagement that are fit for purpose;
5. **WORKING TOGETHER:** We will agree and use clear procedures that enable the participants to work together efficiently and effectively;
6. **SHARING INFORMATION:** We will ensure that necessary information is communicated between the participants;
7. **WORKING WITH OTHERS:** We will work effectively with others with an interest in the Strategy;
8. **IMPROVEMENT:** We will actively develop the skills, knowledge and confidence of all the participants;
9. **FEEDBACK:** We will feedback the results of consultation and engagement to the wider community and organisations involved; and
10. **MONITORING AND EVALUATION:** We will monitor and evaluate whether the consultation and engagement achieves its purposes and meets the national standards for community engagement.

In accordance with the National Standards for Community Engagement, consultation and engagement was based on the following principles:

- Fairness, equality and inclusion underpin all aspects of community consultation and engagement;
- Consultation and engagement has clear and agreed purposes and methods that achieve these purposes;
- All participants are encouraged to build on their knowledge and skills when being consulted; and
- Accurate, timely information is provided to enable effective consultation and engagement.

### **3. Consultation and Engagement to inform preparation of the Consultative Draft Climate Change Strategy 2019-24**

#### **3.1 Initial Consultation Undertaken to Inform Preparation of the Strategy**

Responses from previous consultation events undertaken by the Council were used to inform initial preparation of the Strategy, specifically consultation and engagement at a series of events held during Climate Week 2017 (September 2017) on 'Climate Adaptation East Lothian'.

### **3.2 Identification of Key Stakeholders**

Key stakeholders, both internal and external, were identified at an early stage in Strategy development. These comprise the wider partnership group for consultation and engagement, including:

#### **Internal stakeholders – East Lothian Council:**

- Elected Members
- All East Lothian Council staff: to encourage 'buy in' to the project and enable the Council to lead by example in reducing carbon emissions and encourage and facilitate behaviour change;
- Key East Lothian Council staff to help advise on, lead, develop and promote the project;
- The Climate Change Planning and Monitoring Group - remitted to:
  - Oversee the development of the Climate Change Strategy
  - Approve key stages in relation to Strategy preparation
  - Monitor and evaluate the implementation of the Strategy
  - Receive regular reports from the Project Officer
  - Set up any other groups required to ensure that it performs its function
  - Ensure links with other key strategic planning structures as appropriate
- Key 'Delivery Subgroups' - identified as being required, e.g. Sustainable Transport Officers Group, to assist with delivery of the Action Plan.

#### **External stakeholders in East Lothian:**

- Area Partnerships, including 'On The Move' and 'Active Travel' sub groups;
- Community Councils;
- Tenants and Residents groups;
- Key external organisations currently involved with and/or leading on the sustainability agenda in their local communities;
- Volunteer groups, including:
  - East Lothian Countryside Volunteers and Path Wardens
  - 'Friends Of' groups
  - 'In Bloom' groups
- Young People's environmental / sustainability groups;
- Businesses;
- Business advisor from Resource Efficient Scotland;
- Advisory bodies.

#### **External stakeholders – national bodies:**

- Scottish Government;
- Other key external organisations and bodies, including:
  - Adaptation Scotland
  - Central Scotland Green Network Trust

- Eco Schools
- Energy Saving Trust
- Historic Environment Scotland
- Home Energy Scotland
- Keep Scotland Beautiful
- Paths For All
- Scottish Environment Protection Agency
- Scottish Natural Heritage
- Resource Efficient Scotland
- Sustainable Scotland Network
- Sustrans
- Zero Waste Scotland

### 3.3 Branding and Communications

#### 3.3.1 Branding

The Council is developing an East Lothian Climate Change/Sustainability brand for consistency and recognition across the Council and the county. This reflects the wide range of projects and initiatives underway, to be incorporated into the Strategy and Action Plan.



The Council will engage the public in the development of a 'logo' and branding, to encourage engagement, participation in and recognition of the project.

#### 3.3.2 Communications

##### Internal East Lothian Council:

1. Internal media release 1: article in Inform (Spotlight), June 2018
2. Meetings with key Council staff to understand their roles and how they relate to the Climate Change/Sustainability agenda, and their aspirations moving forward
3. Climate Change Planning & Monitoring Group steer and approval
4. Presentation to Senior Management
5. Presentation to Elected Members
6. Development/reinstatement of 'CRAW' ('Conserving Resources at Work'), or similar
7. Internal media release 2: article in Inform
8. Option of monthly branded section in Inform
9. Promotional materials in offices/depots e.g. posters, stickers
10. Invitation to attend drop-in consultation workshop events (see 3.4.3 below)

#### External:

1. Meetings with key groups/organisations to understand roles and how they relate to the Climate Change/Sustainability agenda, particularly in relation to local communities; key projects already underway; and aspirations moving forward.
2. Networking events attended and training courses undertaken, including Low Carbon Scotland Conference 2018, and events/training organised by Scottish Government, Sustainable Scotland Network, Adaptation Scotland, Scottish Local Authorities Economic Development Place Group etc.
3. Area Partnership sub-group meetings attended (Musselburgh, Fa'side, Preston Seton Gosford, North Berwick Coastal AP sub-groups)
4. Meetings with various local businesses.
5. Meeting with East Lothian Business Advisor from Resource Efficient Scotland.
6. East Lothian Council Website updated on climate change / sustainability.
7. Dedicated email address to obtain feedback and provide a single point of contact at East Lothian Council: **[climatechange@eastlothian.gov.uk](mailto:climatechange@eastlothian.gov.uk)**
8. Media release 1: press release, Facebook, Twitter – promoting the climate change / sustainability agenda, the Council's role and consultation events (see 3.4.3).
9. Climate Change Events to inform development of the Strategy (see 3.4.3): A series of public drop-in consultation events/workshops to promote the climate change / sustainability agenda, encourage participation and engagement, promote local ownership of the Strategy and identify priority actions.
10. Online survey on the Consultation Hub running concurrently with consultation events and promoted electronically / via Twitter / Facebook.
11. Media release 2: Formal public consultation on the Draft Strategy (8 weeks; Consultation Hub) with associated promotion and publicity.
12. Media release 3: Final Approved Strategy published on East Lothian Council website with associated promotion and publicity.

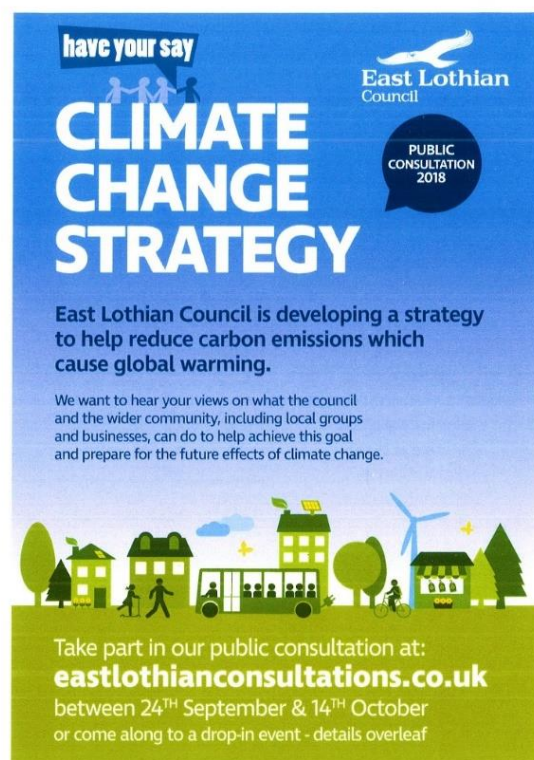
### 3.4 Initial Public Consultation on Developing a Climate Change Strategy

An initial public consultation to inform the development of the Climate Change Strategy and Action Plan took place during autumn 2018. The consultation consisted of:

- **Public drop-in events**
- **Online public consultation**
- **Email:** People could also email comments / feedback to the Council's designated email address **[climatechange@eastlothian.gov.uk](mailto:climatechange@eastlothian.gov.uk)**

#### 3.4.1 Consultation drop-in events

A series of public drop-in events/workshops were held as part of the process of developing the Climate Change Strategy. These ran parallel with Climate Week 2018 and were widely promoted. The consultation events:



- Encouraged the participation of people across East Lothian's communities, to raise awareness, encourage 'buy-in', and engage with local people / communities in the development of the Strategy;
- Identified climate change/sustainability projects already underway in East Lothian's communities;
- Identified key gaps and circumstances in which East Lothian Council could assist with developing projects that improve sustainability/reduce carbon emissions;
- Finding out what local people would like to see in their communities to promote and encourage sustainability and reduction in carbon emissions, and identify achievable actions that can deliver these;
- Obtaining feedback and suggestions as to what East Lothian Council could or should be doing to promote and encourage sustainability and carbon emissions reduction, both within the Council and around the county;
- Incorporating all of the above into the Consultative Draft Strategy as appropriate.

Six consultation events were undertaken around the county, one in each Area Partnership area, as follows:

- Dunbar: 24 September 2018, 4–6pm (Bleachingfield Centre)
- Port Seton: 25 September 2018, 4–6pm (Port Seton Centre)
- Tranent: 26 September 2018, 4–6pm (Loch Centre)
- Haddington: 1 October 2018, 4–6pm (Town House)
- Musselburgh: 2 October 2018, 4–6pm (Musselburgh East Community Learning Centre)
- North Berwick: 4 October 2018, 4–6pm (St Andrew Blackadder Church Hall)



### 3.4.2 Online consultation survey

An online survey on the Consultation Hub ran concurrently with the consultation events, to provide an alternative method for people to engage with the development of the Strategy. This was open from 18 September to 14 October 2018.

<https://eastlothianconsultations.co.uk/infrastructure/climate-change-consultation-events/>





### 3.5 Outcomes of the Consultation on Developing the Strategy

A total of 166 people took part in the consultation to inform the development of the Climate Change Strategy: 105 people came along to the drop-in events, 52 took part in the online consultation, and 9 people emailed additional comments / feedback.

- Respondents provided information, feedback, local views and ideas from across East Lothian on how the Council and our communities can work together to tackle climate change.
- Comments were received on a wide range of topics, including planning, housing, renewable energy, local food growing, transport, biodiversity, greenspaces, waste recycling, business and the local economy.
- The information obtained was considered, analysed and used to inform the Strategy and Action Plan.

All responses received through the various consultation and engagement methods were systematically considered, and where appropriate, incorporated into the Draft Climate Change Strategy. All responses, comments and feedback received during the public consultation are set out at Appendix 1 below.

## 4. Consultation and Engagement to inform preparation of the Final Climate Change Strategy

### 4.1 Formal Consultation

The formal consultation period ran for a **xx week period from xx until xx 2019**. The Consultative Draft East Lothian Climate Change Strategy 2019-24 was highly publicised and made available on the Council's website at the Consultation HUB. Survey questions were attached as follows, although respondents did not require to respond in this format:

1. Does the Consultative Draft Climate Change Strategy capture the key climate change and sustainability related issues and challenges that we face across East Lothian?
2. Do you have any comments on the draft vision for East Lothian?
3. Do you consider the seven outcomes to be appropriate?
4. Do you consider the draft actions to be suitable in addressing identified issues?
5. Do you have any comments on the Integrated Assessment?
6. Do you have any comments on the consultation process?
7. Do you have any other comments?

A link to the consultation was promoted via the Council's Facebook and Twitter accounts.

#### **4.2 How responses to the Consultative Draft Strategy will influence the Final Strategy**

All responses received through the formal consultation will be systematically considered and where appropriate, used to influence the Final Climate Change Strategy. This is set out at Appendix 2 below 'You Said... We Did'.



## **Appendix 1: Responses to Initial Public Consultation on Developing the Draft Climate Change Strategy**

This Appendix sets out all consultation responses received (both from the drop-in events and online consultation) during the initial public consultation on developing the Draft Climate Change Strategy, which was held from 18 September to 14 October 2018.

The responses relate to the following questions, which were asked during the consultation:

### **Question 1:**

#### **What actions could East Lothian Council take to help reduce carbon emissions and be more sustainable?**

East Lothian Council has already undertaken many initiatives to reduce our carbon emissions and promote sustainability, and has many more projects underway. **What else could the Council do?**

Here are some ideas. Do you think that these are important and should be followed up?

**Please give each of the ideas below a score from 1 to 4, where 4 = very important, 3 = fairly important, 2 = fairly unimportant, 1 = not important**

- Single-use plastics: look into alternatives in Council-owned public buildings and venues
- Schools: look into alternatives to single-use plastics in schools
- Schools: recycling facilities in all school dining halls
- Work with Enjoyleisure to reduce single-use plastics in leisure centres
- Sustainable procurement: look at what we purchase, the supply-chains and the 'carbon footprint'
- Green Travel Plan for Council staff
- Support schools to introduce 'Bikeability' training, to teach children to cycle safely on roads
- Support the 'Eco Schools' programme in East Lothian schools
- Investigate 'carbon off-setting', such as tree planting, where appropriate
- Look into the re-use/re-purposing of office furniture

**Results are illustrated on the following page.**

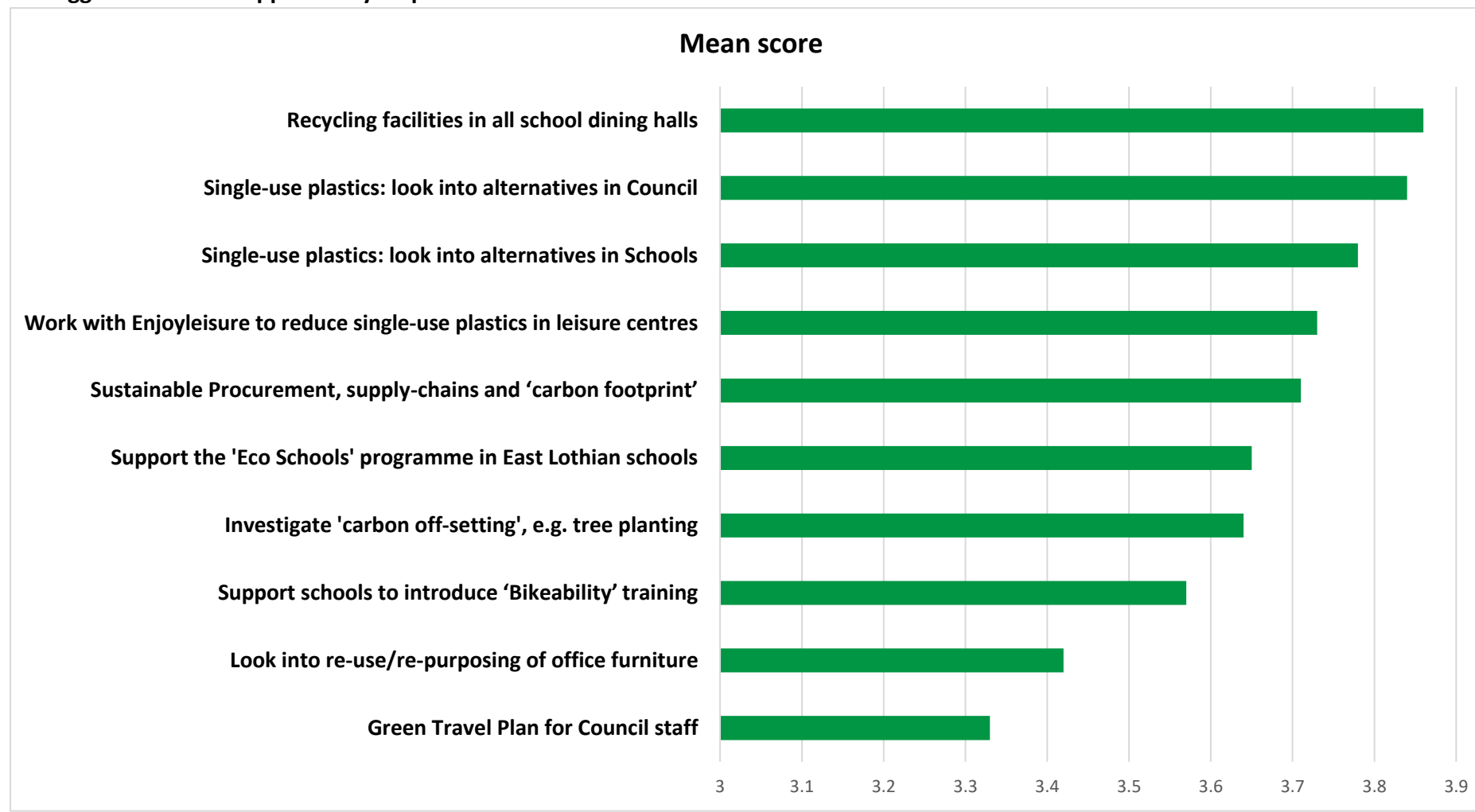
**What else could the Council do? Please add your comments here:**

[responses are transcribed in the following table]

**Results: Responses to Question 1: What actions could East Lothian Council take to help reduce carbon emissions and be more sustainable?**

4 = very important, 3 = fairly important, 2 = fairly unimportant, 1 = not important

All suggestions were supported by respondents:



## **Question 2:**

### **How can East Lothian Council work in partnership with East Lothian's communities?**

Many local groups and organisations are already making a difference in our communities with projects to reduce carbon emissions, encourage a more sustainable lifestyle, and adapt to climate change. **How can the Council work together with communities to help with this?**

Here are some ideas. Do you think that these are important and should be followed up?

**Please give each of the ideas below a score from 1 to 4, where 4 = very important, 3 = fairly important, 2 = fairly unimportant, 1 = not important**

- Support businesses promoting sustainability, environmentally-friendly products, and/or green tourism initiatives
- Encourage and assist businesses and event organisers to reduce single-use plastic use
- Investigate expanding 'Zero Waste' initiatives into all of East Lothian's communities to support the move to a 'circular economy'
- Continue to facilitate the roll-out of superfast broadband to East Lothian's communities
- Work with businesses and event organisers to promote sustainable travel
- Continue to upgrade and promote the path and active travel network
- Identify areas of Council-owned land that could be improved as green networks, particularly in urban areas
- Help to promote local food growing initiatives
- Support projects to encourage children to walk, cycle or scoot to school and to reduce the negative impacts of parking close to schools
- Support the 'Plastic Free Communities' initiative
- Investigate schemes to improve and encourage biodiversity and wildlife in urban areas
- Assist with providing composting bins for household food waste
- Support communities to draw up plans to become more resilient in the face of extreme climate events
- Investigate options for woodland creation schemes with landowners
- Investigate options for local business hubs and/or local co-working spaces
- Expand electric car charging points around the county
- Investigate opportunities for electric bikes in our communities

**Results are illustrated on the following page.**

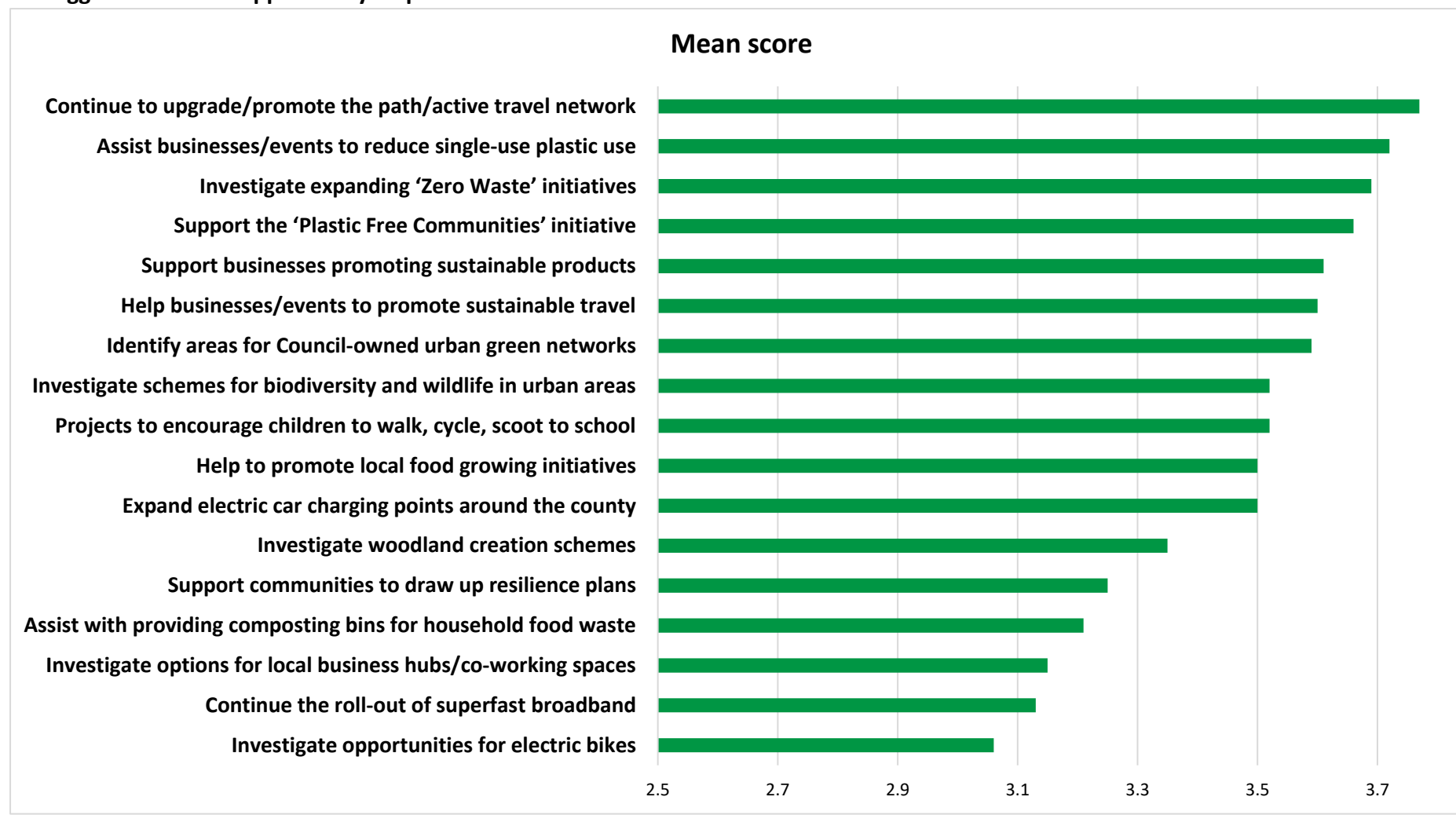
**What else could the Council do, working in partnership, to assist East Lothian's communities? Please add your comments or suggestions here:**

[responses are transcribed in the following table]

**Results: Responses to Question 2: How can East Lothian Council work in partnership with East Lothian's communities?**

4 = very important, 3 = fairly important, 2 = fairly unimportant, 1 = not important

All suggestions were supported by respondents:



**Question 3:**

**How can East Lothian Council, and its local community partners, achieve these ideas? Can you help?**

Please suggest any ideas for how the Council, local community groups, organisations, businesses or individuals can help to achieve these suggestions:

[responses are transcribed in the following table]

**Question 4:**

**What is already happening around East Lothian?**

What groups are already working to improve sustainability, reduce carbon emissions, or help our communities adapt to the effects of climate change?

Add your comments here:

[responses are transcribed in the following table]

## **DRAFT CLIMATE CHANGE STRATEGY CONSULTATION RESPONSES – FEEDBACK QUOTES RECEIVED**

Consultation Responses: Initial Public Consultation on Developing the Climate Change Strategy, 24<sup>th</sup> September – 14<sup>th</sup> October 2018

**What actions could East Lothian Council take to help reduce carbon emissions and be more sustainable?**

**How can East Lothian Council work in partnership with East Lothian's communities?**

Category of Response	Consultation Response
Planning	Town Planning: Carbon abatement costs to be quantified in all major planning applications
Planning	Be robust on the planning conditions – Factoring is an issue e.g. Greenbelt are selling off open space and playparks – residents have to pay to maintain areas they do not own
Planning	Protect prime agricultural land from housing – The Planning system needs to be robust. Post Brexit you cannot grow food if it's under housing – Gladman, Cala, Robertson etc [Dunbar] should not have been granted.
Planning	Avoid allocating the best agricultural land for development to support local production.
Planning	Stop developments on prime agricultural land – you cannot grow food if it's under housing e.g. Cala and Gladman [Dunbar]
Planning	Consult local community councils and other groups re planning of new housing developments
Planning	New housing should be located in small hamlets and villages to make them more viable communities, i.e. large enough to have their own primary schools, small shops, pubs and local employment.
Planning	Stop building new housing developments on land which needs to remain green.
Planning & Building	Restrictions on building infrastructure which is not needed such as caravan parks, holiday homes and shops etc due to this ruining the countryside. If it was a hospital or GP then that's fair enough.
Planning / Infrastructure	Look at existing infrastructure and plan how to meet expansion created by housing development
General / Planning	Common sense, effectiveness should be a priority, not empire building and buzzwords.  All these new housing developments require improved infrastructure. House builders are making huge profits on each development so make green technology a condition of planning permission. Insist on solar panels, car charging points on all new houses. It's far far cheaper for the builder to buy and install in bulk than it is for each home owner to retrospectively install.
Building project ideas	Look at pilot schemes S London (a few at moment) for self build communities Walter Segal, Yale building project Alternatives to big developers – lots of examples in the Netherlands – look at housing in Amsterdam old docklands



Project ideas: buildings / education	Pilot eco design housing and self build projects or community space – bus stop? Run as live project – show case within schools looking at environmental impact from embodied energy of materials to design of buildings to maximise natural light and ventilation. Zoning of use for out of hours use
Housing	Provide social support to try and encourage people to stay with in families and not form their own households e.g. if good support was available for old people their families might feel more inclined to have them living with them. Provide (or encourage the private sector to provide) really good quality older peoples housing, so they move out of large houses they don't need, allowing better use of that space - fewer new family houses would then be needed, and you wouldn't be heating a big house for one person.
Housing	Support groups seeking low-carbon housing solutions e.g. tiny houses
Housing	Support for – including land allocation – for alternative affordable housing provision e.g. co-housing, self build eco-villages etc, tiny houses
Energy / Recycling / Strategy general	Have <u>explicit ambition</u> to make E.L. [East Lothian] exceed current standard for energy efficient buildings / recycling etc.
Housing / Planning / Energy	I am concerned about the amount of new houses being built in East Lothian on what was previously farm land. I love the countryside in East Lothian and the quaint villages. It is a shame to see this disappear. If more houses are absolutely necessary it would be good to see the council insisting on more eco-friendly houses using renewable energy.
Housing / Energy / Water	All new houses to be built with water reclamation / rainfall gathering, options for basements, options for alternative energy sources – <u>at cost</u>
EV / Planning / Housing	Insist on electric charging points for all new housing developments
Planning / Energy / EV / Travel / Construction	Planning Policy – make the energy generation and energy efficiency the highest priority: <ol style="list-style-type: none"> <li>1. ensuring homes maximise capture of sunlight (both passive use and generation (PV))</li> <li>2. requiring EV chargers on all new homes</li> <li>3. making developments prioritise cycling and walking, e.g. bike store</li> <li>4. require zero emissions in operation</li> </ol>
Planning / Energy	The Council should be more visionary and work with developers to create the infrastructure in new developments which could tap into alternative power / heating technologies. The new developments around Dunbar is an example where with some foresight and investment the green field development could have had additional infrastructure built into the ground to tap into the potential heat offering coming from the EfW at the Viridor site. The cost of retrofitting will probably be too costly but is there a lesson and where else will opportunities present.

Planning / Housing / Greenspace	Planning and development needs to be in lock step on the low carbon agenda - the housing developments going up across East Lothian are not fit for purpose for 2032. Landscaping and green space to match/exceed these developments should be built in.
Planning / Housing	More thought needs to go into approving more and more house building. More amenities and public transport needs to be part of these developments. Alternatives to detached and semi-detached houses providing accommodation for single people, older people and using less land need to be provided. If we are trying to grow more local food then we don't want to build on all of it.
Planning / Housing / all	Make all new housing have to incorporate stringent environmental measures – insulation, energy efficiency, green spaces, cycle routes
Housing / Planning	Press for High Green Standards in new houses
Energy / Planning	Look at ways of using alternative energy sources where possible. Encourage planning to include better insulation and sustainable local energy sources for new developments.
Renewables / Housing / Planning	Encourage the use of renewables – don't allow property developers to get away with building energy in-efficient homes
Housing / Energy	New build housing must be 35% sustainable energy sources
Planning / Energy / Housing	Make an energy audit a requirement of planning proposals. Phase in a requirement for triple glazing starting with all new housing and extending this to older stock by 5 years every year.
Planning / Energy	All new builds – residential and commercial – must have solar panels and/or wind turbines as standard. Do not give planning permission without it.
Planning / Housing	All new builds including social and affordable built with solar power panels
Planning / Housing	Planning policy: ensure all new homes are configured to maximise renewable energy generation and energy efficiency
Planning / Housing	All new housing developments should have solar panels built in to all the homes as a condition of planning
Energy / Housing	Only build new houses that have solar PV
Energy / Housing	More microgeneration - solar panels obligatory on all new builds. Allow modern insulated windows to be fitted instead of old-style sash windows.

Energy / Housing	<p>All Council-owned buildings to have their own wind turbines and solar panels. All new Council-owned buildings to incorporate heat-pump technology (does the new primary school building in North Berwick use this technology- and if not, why not?)</p> <p>Conduct an inventory of the heating systems of all Council-owned buildings to see how they might be modified to reduce use of carbon-based fuels.</p> <p>Building standards for all new properties/extensions/modifications to be set to the most stringent standards possible and to include solar arrays. Heat-exchange ventilation systems and triple glazing (ie as close to Passivhaus standards as the law permits).</p>
Energy / Housing	All new housing planning permissions should have to have solar panels for energy sources.
Energy	<p>Longer term - with repowering of wind farms work to secure community owned renewables. With bigger capacity wind turbines there could be space to install greater total capacity. Previously the possibility of a wind turbine for each town in East Lothian was investigated.</p> <p>The income stream will support projects that promote resilience of local communities.</p>
Energy	Share energy costs – multiple use buildings
Energy	Include community energy schemes as standard in new development
Heating	Make it mandatory for landlords to upgrade their insulation / heating systems to help renters
Energy	Set energy reduction targets for each of its [Council's] services in a 3 year plan. Ensure Councillors and Service Heads sign up to deliver these with an adequate budget.
Energy	Can the Council help the community to look at Community Energy Scheme for NB [North Berwick]
Energy	The council should buy all of its (gas and) electricity from green / renewable sources e.g. local supplier, 'People's Energy'
Energy	PV cells on <u>all</u> public buildings
Energy	Wind turbines in built-up areas?
Energy	Grants to private house holders to allow installation of solar panels
Energy	Solar Panels: Every house should have them. Every building should have them.
Energy	All new buildings should have solar panels fitted as standard
Energy	Small energy generation sites and use energy close to these (with big power plants huge % of energy lost between generation / place of use) – Scandinavians have used this for decades and saved loads of energy
Energy	More wind turbines / solar panels on public buildings
Energy	Long term Investment in solar energy solutions to offset the cost of buying from the grid, provide opportunity to sell as private wires or being creative with rechargeable battery storage and deployment for use on site works or provision of temporary power (commercialisation opportunity).

	Energy saving lighting within offices e.g. timers, LED lighting etc.
Energy	Install more local wind turbines, even small ones, for local communities - or support local communities to install locally.
Energy	Install small hydro electric schemes locally, e.g. along the Tyne.
Energy	The Council should be looking at renewable energy and reducing the carbon emissions of all of its buildings.
Energy	Put solar panels on council owned buildings including Council housing - lots of south facing roofs there.
Energy	Insist on solar/wind/pvc on all domestic new builds and where appropriate industrial buildings.
Energy	Programme of retrofitting ELC's buildings and housing stock to achieve highest possible standards of energy efficiency.
Energy / Schools / Renewables	Schools should have control over their energy costs and be encouraged to start renewables schemes
Energy / Leisure centres	Review energy use in Leisure Centres e.g. the showers in Musselburgh sports centre are exceptionally hot. Lowering the temperature by a couple of degrees will save energy, emissions and money.
Energy	Community Energy Scheme?! – shares sold to members of community. Some profits paid to community.
Energy / Renewables	Much greater expansion into renewable energy resources: wind, solar, water, sea
Energy / Renewables	Help community renewable energy projects
Energy	More solar panels
Energy	Turbines for outlying communities
Energy	Support and encourage communities to set up their own wind turbines and hydro electric schemes.
Energy	Ensure that all new housing use heating that produces less carbon emissions.
EV / Energy / Advice & assistance	<ul style="list-style-type: none"> <li>What actions could the Council take to reduce carbon emissions and be more sustainable?</li> </ul> <p>One thought... Convert the ELC fleet of vehicles to electric where feasible with a staged programme of rolling purchases and do a bulk energy deal to bulk buy renewable electricity to power them.</p> <p>Also, what opportunities for ELC to develop community based wind turbines in various locales around East Lothian utilising various pockets of under utilised/available land in the possession of ELC to site equipment (where deemed appropriate). This could be done on a case by case basis, seeking communities to be the driving force for this in order to avoid any suggestion that it's unwanted by the NIMBY brigade.</p> <p><a href="http://www.begreencentres.co.uk/dunbar/">http://www.begreencentres.co.uk/dunbar/</a></p>

	<ul style="list-style-type: none"> <li>How can the Council work in partnership with East Lothian's communities to help achieve this?</li> </ul> <p>Advice -- expertise -- technical &amp; legal assistance for communities which want to explore community backed wind generation capacity either as communities or in partnership with local landowners, such as farmers.</p>
Recycling / Heating	Standard across all public buildings for recycling AND heating – centralised heating system must be from the dark ages!
Greening / Energy	Help add grass and solar panels on to some important buildings to show that they care about climate change
Energy / EV	Look at how council owned buildings are powered. Increase use of electric vehicles.
Business / Pensions & investments	Pensions and Investments: ensure no investment in fossil fuel organisation – this is very important to avoiding climate change
Businesses	Small, <u>non-polluting</u> businesses locally
Business / Retail	More offices / factory units / central retail park – Macmerry and local produce centre
Supply Chain / Local distribution	Distribution Hubs – extra vehicles drivers / wages – put up costs. Extra warehouses – heating, lighting, wages – put up costs. Keep local <i>[examples given illegible]</i>
Businesses / Campaign	Campaign for carbon tax to encourage businesses to reduce carbon emissions
Business	Existing businesses and new ones that come into [East Lothian] are given a policy that details ways they can contribute towards a healthier environment.
Business	Make it pay to be more climate change aware: - encourage business to business initiatives - don't make ELC in charge of the projects / relationships
Co-working	Support co-working opportunities e.g. Sustaining Dunbar
Businesses	Provision of small-scale, flexible work-space / workshops for new enterprises for local livelihoods
Business / Community initiatives	Support community initiatives over the (narrow) interests of business e.g. The Quay at Musselburgh
Industry	Encourage investment in systems to produce electricity from waste (plastics etc)

Travel / Co-working / Flexible working	Support projects to encourage children to walk to school goes hand in hand with co-working / flexible working. Car = easier for parents on time restrictions, but if flexible working / co-working spaces.
EV / Travel	Much greater expansion of car clubs and electric car charging points
Travel / EV	Invest in low emission vehicles <ul style="list-style-type: none"> <li>- ELC fleets should be EV or HEV (compare projects in Aberdeen, Dundee and Fife) – 1 million miles, 1 million journeys on H<sub>2</sub> buses</li> <li>- Invest in H<sub>2</sub> and EV buses</li> </ul>
Travel / EV	Electric charging points. Park and Ride across from Esso [North Berwick]. Pedestrianise town centre [North Berwick] or make Law Road one way.
Travel / EV	- Expand the car clubs – allow public car parking spaces for shared cars. - Also expand car charging points.
Travel / EV	Pedestrian town centres only. Public transport electric.
EV / Funding	Campaign for more financial incentives to make electric car use a financially viable alternative
EV	Get more charging points for electric cars and encourage other countries to do the same
EV	Many more charging points for electric cars (and make sure they are working)
EV	Electric car plug in sites more available
EV	Install more charge points for electric cars.
EV	More charge points for electric cars
EV	Electric car charging points would be useful but please ensure that these are not installed on footpaths. Space for charging points should be to the detriment of pedestrians.
EV	We <u>NEED</u> more electric car charging points and fix the broken ones!
EV	Electric cars – need to sort problems of maintenance e.g. Council points have been out of order. Also compatibility – Scotrail are using a different system to those [...] by the Scottish Government
EV	Electric vehicles still use energy
EV	EV charging at <u>all</u> public buildings
EV	Electric Vehicles where / when possible throughout Council
Travel	Pedestrianise town centres and promote active travel via wider footpaths and cycleways that are segregated. Make it harder to drive a car and easier to use more sustainable methods.
Travel	North Berwick High Street – east end pedestrian friendly
Travel	Low / zero emission zones:



	<ul style="list-style-type: none"> <li>- high streets and schools should immediately be low / zero emission zones (especially during peak times)</li> <li>—&gt; reduce emissions</li> <li>—&gt; encourage active travel</li> </ul>
Travel	<p>Car use around school drop off areas: - council supported – child pick up ‘crocodiles’</p> <p>Must be terrible for air pollution and child safety. The King’s Meadow ‘solution’ good but has pushed the issue to surrounding area. Will only get worse.</p>
Travel	<p>Low emission public transport.</p> <p>Cycle friendly public transport —&gt; <u>space on buses.</u></p> <p>Increased cycle infrastructure between towns.</p>
Travel	<p>Cycling and walking:</p> <ul style="list-style-type: none"> <li>- have tough measurable targets for bike use and consequences for failure to meet</li> <li>- prioritise cycling infrastructure especially segregated cycle routes and safe routes to school</li> </ul>
Travel	Make North Berwick High Street traffic free
Travel	<p>Some ‘incentive’ for cycling to work.</p> <p>John Muir House car park should be short stay, not a car park for those staying all day. People can park further out from JMH and then walk in, keeping spaces for visitors and short stays.</p>
Travel	Park and Ride: Field opposite Esso [North Berwick] would be ideal
Travel	Towns becoming ‘bike and pedestrian’ friendly – priority to bikes and pedestrians
Travel	Repair roads – some like Hospital Road in Belhaven are dangerous for pedestrians and cyclists
Travel	<p>Open up safe routes south of the railway line – e.g. through the woods.</p> <p>Safe route on Back Road, Belhaven.</p> <p>Pavement between Beveridge Row and Brewery Lane [Belhaven] – Cala have already paid ELC to build this but nothing happening.</p>
Travel	Car sharing employees
Travel	Pilot car sharing schemes —> Online lift sharing networks
Travel	More live bus stop information covering all bus companies
Travel	<p>Town centre pedestrianisation [Tranent].</p> <p>Improve town perimeter parking – park and ride [Tranent].</p>
Travel	2 retail parks at Haddington – means driving between the 2 and no bus service to Peffercraig
Travel	<p>Bus stops – mark road with bus stop box and make them larger.</p> <p>Bus stops in wrong places e.g. Longniddry Station – bus stop at traffic island; ditto Whitehill Road / Salters Road opp. Belmont / Pinkie Road, Pinkie Pillars</p> <p>1 past layby and 1 at shop / satellite park / industrial estate, next stop industrial estate east – there is <u>no</u> bus stop.</p>

	<p>Tranent High Street at chip shop: cars parked in stops (both sides).</p> <p>Musselburgh High Street, Law Road / St Baldreds Road cars in bus stop (no bus stop box on road) and cars parked to traffic lights.</p> <p><u>Shelters</u>: some [bus] stops have no shelters and Macmerrie shelters a waste of time – I use car when wet and wind and cold.</p> <p>No bus layby at new stop at Strawberry Corner.</p>
Travel	<p>Car parking – cars / vans parking in bus stops / on double yellow lines / double parking – parking 2 spaces at chip shop, Tranent – buses can't get into bus stop, also other side.</p> <p>Parking at bus stop at shop at New Row.</p> <p>2 spaces at Haddington Road opposite Asda filling station [Tranent] – parking on double yellow lines and keep clear box. Also taxis parking on pavement / double yellows at car sales side of road.</p>
Travel	<p>Wallyford Salters Road – buses can't turn left if anything is coming from roundabout and park &amp; ride road at wrong angle / Monktonhall Terrace parking road not wide enough – driving on pavements HGV – buses</p>
Travel	<p>Buses 26 to Longniddry Station for holiday makers, 6 Seton Sands, 26 Tranent / 26 Seton Sands, 26 going to 2 destinations.</p> <p>Fares –</p> <p>Gaps – e.g. 106 7:40 – 9:40 missing out 8:40.</p> <p>No direct bus to college at Milton Road.</p> <p>2 hour service Haddington to North Berwick</p> <p>106 – Dunbar but only goes to Haddington</p> <p>Convoys of 44s to Wallyford</p>
Travel	<p>RAC survey – more using cars because of lack of public transport</p>
Travel	<p>Trains overcrowded / buses late or not turning up at all. Cost of fares, buses not going to where people need to go, e.g. 106/108 both run the same route to the Fort, 108 goes to Tesco Musselburgh, the 106 goes via Fisherrow but could go via Milton Road college/Asda/Fort/Infirmary.</p>
Travel	<p><u>Roads</u> Tranent eastern bypass.</p> <p>Drem and Kingston (bridge over railway near ?Kingston) and widen road.</p> <p>Coal Road – bridge / underpass on main line at Longniddry.</p> <p>Islands Newhailes Road at Lidl</p> <p>Tranent – widen footpaths and narrow road – High Street</p>
Travel	<p>Dissuade council staff from commuting by own private cars – no free all day parking in Haddington</p>
Travel / Ways of Working	<p>Council vans: 8 vans at 1 job.</p> <p>Jobs done multiple times e.g. gate 4 times and still not repaired.</p> <p>Roads patched multiple times instead of repairing first time properly e.g. outside [...]</p>
Travel	<p><u>Cycle Paths</u>: There are some good cycle paths in East Lothian but not many take you to schools / high streets. i.e. they are great for leisure cycling but not for commuting / shopping. Safer cycle lanes / shared pavements needed.</p>

Travel	Support legislation to reduce urban speed limit to 20mph. If people feel the roads are safer, more will cycle rather than taking the car.
Travel	Encourage cycling, to school, to work, for shopping. Make the cycle routes work, with trains, between towns, for children. Make it a way of life, a key part of new towns and new roads, building sites. Not random patch-ons after the fact, but true integrated cycle routes and paths
Travel	Instead of just giving cycle training to children, you need to create safe spaces for them to cycle in - segregated cycle paths on major routes are essential to encourage people to swap the car for a bike on shorter journeys.
Travel	Advertising campaign to encourage us to use public transport, bikes and legs instead of cars. They have an advertising campaign in Edinburgh city, there are posters at bus stops. The WWF also has a good poster.
Travel	Cycle lanes on roads e.g. Pencaitland to Haddington and A199, coast road.
Travel	The council could give people incentives such as cheaper rail fare at peak hours for them to take bikes on trains to cut out car use. At present it is cheaper to travel by car to work. There is no incentive to take a bike on the train into town to cycle especially at peak time. There has to be some form of incentive such as a rail card for bicycle users or cheaper transport options. There needs to be more spaces on Trains for bicycles too and spaces on buses for them...
Travel	Support rail infrastructure to link up small villages to towns and Edinburgh - at present it is inadequate.
Travel	Improve cycle paths to make cycling more of an option.
Travel	Review the Council's entire vehicle fleet. Are all vehicles required? Could there be more sharing? Are engine sizes appropriate? How many use diesel fuel? How many could be converted to run on alcohol? How many could be electric (so long as the electricity need is balanced out by generation from Council-owned green sources)?  Encourage working from home to reduce unnecessary travel.
Travel	We need better transport connections. With more and more housing being built the network cannot cope. Our house (and I know of many others) use 2 cars for example to transport one person each to stations to get to work in Edinburgh. This is bonkers when the solution is already there... a station at East Linton to serve surrounding areas instead of travelling all the way to Drem. I find it astounding that transport links are not at the top of the list given the housing plans.
Travel	ELC should do something about staff/school car parks full all day - e.g. NB Academy. Looked at as part of reducing 'the school run'. Teachers should know better - at least do a car share.
Travel	Make the opening of East Linton train station a priority
Travel	Encourage much more cycling as a means of transport, in East Lothian - many of the roads are lethal for cyclists. We live very rural and are 100m too close to Yester Primary for our child to get a bus pass, so we drive him the 2 miles every morning. He would love to cycle, but the Duns Road is way too dangerous for a 9 year old to tackle.

Travel	Overhaul our towns so it is quicker to walk and cycle around them than drive (not just 20 mph speed limits! actual cycle/walking improvements)
Travel	Allocate 10% of budget to cycling and walking
Travel	Push for train station in East Linton to save people driving to Edinburgh
Travel	Remove buses for kids living less than 3 miles to school and encourage bicycling/ walking instead
Travel	Get people out of their cars if able bodied
Travel	Subsidise direct buses to Edinburgh College campuses – e.g. Granton; Google Directions 36 minute drive – current <u>quickest</u> bus 80 minutes – why would anyone?
Travel	Develop plans for joined up cycle and walking routes to allow people to reach schools, shops, services and leisure facilities – safely and easily
Travel	Allow use of the East Coast Bus tour bus to be used by service users. There is no bus at a ‘normal’ time to get across the county so this may help! I can get to classes in NB [North Berwick] in evening but I can’t get back!
Travel	More off-road cycle routes in rural areas
Travel	Arrange / subsidise local minibuss travel for communities with poor transport links
Travel	<ul style="list-style-type: none"> <li>- Support and encourage community initiated projects, including with funding and infrastructure</li> <li>- electric hop on/off minibus</li> <li>- cycle share schemes</li> </ul>
Travel	Proper cycle paths – inter connected and safe main routes
Travel	Make the public transport owned, or at least part-owned, by the council so that the service works for the people, not (only) for profit
Travel	Public Transport!! Joined up – how to get EASILY and WITHOUT taking ages – from Dunbar to RIE or Watt or Roodlands!! – RIE in particular. Not everyone has and wants to use a CAR.
Travel	<p>Press for better bus services with Relbus.</p> <p>Press for the opening of East Linton Station with RAGES.</p>
Travel	Surf boards are not allowed on trains – they are banned! – This doesn’t support the local surfing [Dunbar] – people are coming from Glasgow / Edinburgh
Travel	More bike racks in residential areas
Travel / Paths	Paths to connect communities
Travel / Paths	Cycle / walk way from Spott to Dunbar
Travel	Free bus travel for all
Travel	Roads that are safer to use for bikes etc – pot holes are dangerous
Travel	Encourage local car-sharing schemes, etc.

Travel	<p>Speed limits, selfish driving, parents who have to drop their little darlings right at school in the rain regardless of restricted zones and the safety of others.</p> <p>Enforce the 20mph, do something about Countess Road in Dunbar before a child is killed at the crossing by the fire station. Adjust that section of roads and junction, stop people up by the train station flying down Countess road right from the start. It's all down hill.</p> <p>Enforce the restrictions, the lorries nipping through Countess Crescent to get to the High street, smashing a lamp post off a pavement.</p> <p>The massive feed of traffic off the A1 when it closes, right past Dunbar Primary school, the log jam of lorries at Asda carpark and side roads. Mayhem.</p>
Travel	<p>Transport is critical but it is not just about encouraging active transport, the infrastructure needs to be there to support it. The cost of taking a bus from Dunbar to North Berwick (1 adult, 1 child) is £10.50. What incentive is there to not take the car?</p> <p>Trains from Dunbar to Edinburgh are too infrequent and cost more than driving (even for a single person).</p>
Travel	<p>Support the bus companies to produce routes which actually go where people want. There are NO buses which connect my nearest towns and villages unless they sit on the East-West line toward Edinburgh. It's is effectively impossible to travel North-South, or to nearby towns like Dalkeith, outside the county boundary. And the pricing zones can make a journey to the nearest town as expensive as a trip into Edinburgh. It's just not right.</p> <p>Don't penalise people please. Keep these schemes positive. Recognise that transport is a lifeline for many (and not all hold blue badges). Ensure they can still travel...and park when they get there!</p> <p>Remove the parking charge on beach car parks like Yellowcraig until you provide a public transport alternative.</p>
Travel	<p>Improve local public transport to allow more people to go to work and socialise on the bus.</p>
Travel	<p>Again make public transport cheaper, no use expanding cycling networks when people in rural areas can't access trains and buses at reasonable rates to put their cycles on to cycle to work. Schemes to buy bikes through work only work for people with incomes above the average.</p>
Travel	<p>Better / more trains - re-open stations.</p> <p>Better more frequent buses.</p> <p>Make it easy for people to get to work via public transport</p>
Travel	<p>Once again look at changing the culture of travel, promoting safe sustainable travel within communities, not treating the motor vehicle as the most important form of travel.</p>
Travel	<p>Encourage Scotrail to increase train services including a through rush hour train from the East Lothian stations direct to Edinburgh Park.</p>
Travel	<p>Reduce speed limit in all streets, villages, towns and built up areas to 20mph just like in Edinburgh. Reduce it on the A1 while passing through East Lothian to say 50 or 60mph instead of 70mph.</p>
Travel	<p>Reduce train, taxi and bus fares to encourage public transport</p>

Travel	More speed cameras in place to stop speeding which burns a lot of fuel into the atmosphere.
Travel	Make transport cheaper and bring in new incentives and more types of rail cards. One was taken away for the over 50's. Make train travel much more transparent (No idea buying four tickets on one journey made it much cheaper) This is not common knowledge. If this was better known then people would be more inclined to leave their cars.
Travel	Being more proactive in relation to the rail network and the reopening of East Linton station
Travel	More buses and cheaper trains into Edinburgh to encourage public transport
Travel	Please make the opening of East Linton train station a top priority
Travel	Support local car share initiatives and improve links to railways. Ensure buses take card payments and display bus arrival info in each town, or online by town.
Travel	More direct smaller buses
Travel / Education	More road safety education. Access to <u>more voluntary</u> projects – environmental health projects.
Travel / Awareness-raising	Raise awareness of cycle safety with non-bike users: <ul style="list-style-type: none"> <li>- parents dropping off kids at school etc</li> <li>- fit with Bikeability</li> </ul>
Travel promotion	Reinstate the concessionary rail card for the over 60s.
Travel promotion	Lobby for scheme for over 60s who don't wish to use their bus pass to 'donate' it to someone who could use it
Travel / Infrastructure	Need decent cycle paths between communities
Travel / Staffing	Council to transfer some resources from unsustainable transport (roads) to paths and cycle routes. And recruit more access staff.
Travel / Schools	Encouraging children to walk to school needs to be supported with additional safe crossing points e.g. pelican crossing on Fishergate Road, near Alder Road [Port Seton]
School Travel	Improve school buses for Longniddry [....]
Road Safety	get the Girlguiding community to create signs for road safety <a href="https://twitter.com/girlscouts/status/1044257671032053768">https://twitter.com/girlscouts/status/1044257671032053768</a> Speed cameras, police in school parking areas, body cams for lollipop ladies
Travel / Planning	Stop building houses where there is no bus service. Open East Linton Station
Travel / Planning	Ensure all new developments have "community" bikes (hired electric?) – encourage short trip (town centre) use
Planning / Active Travel	Active travel needs to be given higher priority in planning process – I attended a number of public meetings on Wallyford development and talk of Active Travel felt like a tick box exercise – it needs to be taken far more seriously!!



Travel / Planning	Make Green Travel Plan requirements on Developers more than a 'list of bus services' and make them introduce measures that will make them introduce measures that will encourage active travel. Properly enforce such requirements to have them in place when the first houses are occupied.
Planning / Travel	Check infrastructure before developments go ahead. The far end of Brodie Road [Dunbar] still has no bus service. The Robertson / Avant homes have no buses. Gladman so far has no buses.
Travel / Town centres	<p>Green Travel Plan for ALL School Staff (school staff to implement their own wand WITHIN a TIME FRAME. School staff cannot be encouraging pupils to walk to school as school policy, whilst not using alternative transport other than a car.(At the very least they should organise car share. I worked in a large primary school where there was not sufficient space for all staff to park a car and so there was a rota whereby staff were allotted two days a week when they could take their car and for the remainder of the week find alternative transport. Some used public others shared some used a combination. On days when it was their turn to use their car were the days when they took in any class sets of marking or heavy books any preparatory work. Everyone had to accept it and it worked well.</p> <p>Local police/community police officer usually willing alongside parent volunteers who are keen cyclists to run after school or in school time classes beginning on the playground and after guided training out on the nearby roads. There are highway schemes.</p> <p>Carbon off setting: A serious and thorough campaign to pedestrianise town High Streets.</p> <p>North Berwick, Dunbar and Haddington should be prime targets. This could be done with a modicum of cost to the council. In North Berwick High Street for example half the Street could change over to a pedestrianised area whilst still retaining the bus route pick and set down stops. The pedestrian half comprising of many cafes would be able to offer the area gained to further outdoor seating in the Summer months and various shops display a sample of their goods for example fresh vegetables ,DIY items perhaps, plants, market type stalls displaying local crafts. Interspersed with trees. Similar approach to Dunbar and Haddington the extra space available for artisan style local craft ware, Wine and Food Festivals, Christmas markets.</p> <p>ALL pedestrianised town centres to incorporate and provide 'sensitive' parking bays for the disabled.</p>
Travel / EV / Planning	<p>Look at ways traffic infrastructure could be altered to encourage/promote safe and sustainable use, i.e. prioritise active travel, walking, cycling, public transport, electric vehicles (charging points?) etc.</p> <p>Combat the idea that motorised vehicles should have priority in planning.</p>
Travel / Tourism / EV	<p>CYCLING STRATEGY</p> <p>Allocate 10% of the transport budget to cycling and walking, following the example of CEC. Backing it up with an information campaign justifying the new funding. The funding is investment in the future.</p> <p>Encourage staff to cycle, cycle training for adults. E mobility strategy, providing electric bikes for staff to try out. Bike Parking in front of the office buildings at John Muir House in Haddington.</p> <p>Pedestrianise High Streets starting with North Berwick. I visited Fort William in the summer and could see NB hugely benefiting with a</p>

	<p>similar scheme.</p> <p>Sustainable tourism</p> <p>Currently much of the resources for attracting visitors is targeted at Golfers. Often they will be travelling unsustainably.</p> <p>Promote cycle tourism - more could be done to capitalise on the excellent cycling in the County. The recent launch of a bike packing route is to be commended however more could be done to replicate the signed routes in other regions of Scotland and further afield. The Borders have town based maps and associated signage.</p> <p>Introduce a Parking Levy.</p> <p>It could start with workspace parking. Look at Nottingham City Council's example. Use the funds raised to improve town centres and public transport.</p>
Travel / Health	<p>As a very keen cyclist I have an acute awareness of the degradation of paths etc, while motorised vehicle transport seems to be more of a priority. The main way of encouraging folk to use alternative forms is to prioritise it to make it safe, easy, pleasant and economic. Research indicates that mental health can be improved by getting folk active in the outdoors, investment in this would save money in the long run by reduced care and health costs plus potential greater productivity.</p> <p>Don't think big, think HUGE!!!</p>
Health	<p>Find out what works in other countries. There is a European country (Finland?) that tags everyone to check they are exercising enough. If not an officer visits them to work out how they may achieve their fitness goals. This <u>works</u> and has resulted in a 10 year increase in life expectancy. Plus, wellbeing, better health etc.</p>
Strategy general / EV	<p>If you want to encourage people to upgrade to greener solutions you will need to help, not simply insist and charge/tax them. Lots of people simply cannot afford to buy an electric car. So encourage and help, but do not tax. And don't waste money on unnecessary initiatives when simpler can have more effect.</p>
Planning / Waste / Travel	<p>Look to the Netherlands for waste and transport initiatives. Take the council planners on a trip there to learn from best practice. If the council can't afford this, I'll happily lead a crowd funder to do so!</p>
Travel / Open space	<p>Better bus routes within East Lothian</p> <p>greater cycle routes that are car free</p> <p>growing population with less recreational space</p>
Planning / Green networks / Wildlife / Composting / Travel	<p>Make all planning permissions for new build projects subject to environmental criteria e.g. renewable energy, green areas planted and managed for wildlife, bat boxes, swift boxes, spaces for martins and swallows, places where other birds can nest, hedgehog pathways and gateways, community composting, sustainable transportation infrastructures, and other sustainable living criteria.</p>

Strategy general / Insurance / Travel / Agriculture	<p>East Lothian should set out to be an exemplar authority. Perhaps the insurance industry would also support these measures as, as an exemplar authority EL would in its own small way be mitigating against extreme climate events.</p> <p>See also Q1 previously regarding staff and school car parks. No point encouraging the kids to walk etc when teachers are driving to school.</p> <p>See also Q1 regarding greenhouse gas emissions from farm livestock. Support for farmers should be restricted solely to crops that go to humans, not livestock.</p> <p>As an exemplar authority EL could show that the green economy in a pleasant environment beats hands down the old mantra of big roads and big automated sheds.</p>
Travel / Planning / Coastal Protection / Reward scheme / Emergency response volunteers	<p>As a council we should do the following</p> <ul style="list-style-type: none"> <li>• Undertake an immediate audit of vehicle use. Look to reduce vehicle journeys by 50% minimum via the sharing of vehicles, use of smart technology to co-ordinate journeys etc.</li> <li>• This goes for Council vehicles but more so for private vehicles. With 4000 staff, a dedicated bus laid on to transport staff to JMH / Penston would be much more efficient than numerous individual car journeys. And that's before I even start to talk about e-bikes / bikes and the like</li> <li>• Stop allowing developers to build cheap, non-green efficient, car-focussed properties for sale (and hence the road infrastructure people will expect).</li> <li>• Managed realignment from coastal areas. Some, not many areas of the coast could be used to offset storm surges, sea level rise. Where not possible, use of green engineering solutions rather than high carbon structures to aid coastal protection</li> <li>• Reward those that are going out of their way to help and penalise those that are not</li> <li>• Develop community response volunteers who would lead on local responses (in alignment with the emergency services) extreme weather events.</li> </ul>
Uplands / Awareness raising / Travel / Equality	<p>Peat or woodland restoration in the Lammermuirs instead of management for grouse shooting which would help through land use change - encourage use of this area recreationally as an alternative to people driving further to the north of Scotland. Could the Council buy some of the uplands?</p> <p>Changing people's attitudes so they are more receptive to the government measures which will likely be needed. The Council has a captive audience in schools - but really has to reach older people as they have the money so they make most of the decisions that lead to carbon emissions (or not).</p> <p>I think there is a tendency to demonise women on the school run dropping their kids off. They are getting in the way of the important</p>

	people (men) going to work! The council sort of supports this attitude by focussing its efforts on 'walk to school' rather than 'walk to work' - and it has a massive car park at John Muir House/Penston to support driving! This should be the other way round - many people going to work have nothing else to do but get themselves there, so should be able to use buses or walk &c. It's harder for e.g. single parents to drop kids off, get to work, work long enough to earn enough money, then be back in time to pick kids up.
<b>Travel / Air Quality</b>	Reducing the speed limit to 50 or 60 mpg which would greatly reduce carbon emissions and noise pollution. A thorough advertising campaign to end idling of cars. Far more provisions for cycle racks in the towns public toilets in Dunbar and generally better signposted. Far more eco friendly buses with lower emissions (WITH the council target of replacing with electric buses.) COUNCILS across Scotland UNITING alongside the Scottish Government in lobbying the Government in Westminster for funding. Rapid bus transit lanes and separate cycle lanes are vital if we want to encourage more people to use more public transport.
<b>Travel / Air Quality</b>	Ban diesel vehicles, old vehicles etc from going certain places on certain days and times for example North Berwick on a Saturday Haddington on Wednesday
<b>Air Quality / Travel</b>	North Berwick High Street: (a) polite campaign 'please switch off your engine' (b) if ignored bring in bylaw (c) move towards pedestrianisation (d) Council vehicles mandatory switch off
<b>Air Quality</b>	NB [North Berwick] High Street: Monitor pollution levels and enforce law accordingly
<b>Air Quality</b>	Take action against car users who let engines idle, e.g. taxis at station, parents at the school, lorries delivering to shops etc.
<b>Air Quality</b>	Traffic wardens to cut down on vehicle idling. I have lorries left empty with the engines idling outside my house every day as there is a shop a few yard up the road where the drivers grab (single-use plastic-wrapped) snacks and drinks. In the autumn there are many grain lorries and the number of vehicles increases drastically. I have never seen a traffic warden in the area but it would make such a difference. Even signage would help. The cloud of diesel fumes is awful.
<b>General / Air Quality / Energy / Travel</b>	Carbon pollution is identified as the main driver with thirty years store in the atmosphere at present waiting to be unleashed. The Grantham Research Institute at LSE calculates that we require a 50% fall in carbon emissions by 2030 and net zero by 2050 ( Scotland already has a legal obligation to cut emissions by 80% by 2050 under the Climate Change (S) Act). We cannot wait for miracle geo engineering, often an excuse for delay. In NB High Street, monitor emissions, start a campaign 'don't be an idler', use existing legislation to clamp down on idling with an air quality management zone. Work with shop keepers on pedestrianisation and car users on ditching their short journey habit, whilst respecting disabled needs. Be prepared for the indignant back lash. Extend the no idling campaign to Council's own vehicles, buses and service and utility vehicles. Energy: large scale retro fit programme, revise local plan (e.g. embargo on open cast coal, offshore oil and gas. Mandatory to have

	<p>solar/ heating panels on southerly roofs in new build. Invest in community heating e.g. in new town near Preston Pans. Massive swing in favour of sustainable transport - yes, higher car parking charges, more frequent, reliable, clean buses. Town Planning needs to be more assertive in tackling car dependency.</p> <p>Monitor results quantifiably and scientifically with a target of no more than 1.5 degrees C above pre industrial levels. No weasel words, please e.g. "where practical", "striving towards", "seeking to mitigate".</p> <p>I wish you success.</p>
Golf courses / Biodiversity	<p>Work with golf clubs to promote sustainable practices on maintenance:</p> <ul style="list-style-type: none"> <li>- reduced pesticides</li> <li>- increase biodiversity</li> </ul>
Land Use / Planning	Is this to promote allotments – more of them? Or to ensure our very limited stock of A1 arable land is protected from encroaching development
Local Environment / Planning	Make sure the Cockenzie Power Station site is developed in a way that will enhance our environment – no more ugly buildings
Greenspace / Gardening	More community gardening facilities – make land available, financial support
Greenspace / Gardening	Plant trees wherever possible and encourage wildlife friendly gardening in all council green spaces
Green Networks	Turn grass verges into wildflower / long grass wildlife corridors
Greening / Tree planting	Plant more trees and add more grass
Tree planting	[re. the above] Seconded! Tree Planting projects
Tree planting	Support and encourage communities to plant trees where land is available.
Tree-planting	<p>I just thought so as to make an income to help you with the expenses of making changes that perhaps locally we could encourage people to pay for a new tree and planting when a baby is born in the county...instead of the plastic toys etc..perhaps some babes will have many trees bought for them? Local land owners would probably happily allocate some of their land for forestry? Or the Lammermuir hills?</p> <p>I know that is not sorting plastic issue but perhaps it's something we can start that doesn't need council backing and therefore can get going quickly and is helping environment.</p>
Trees	Woodland Trust donate free trees
Wildlife habitats / Tree planting	Tree planting is good, but don't cover valuable habitats with trees – need a variety of habitats for wildlife

Wildlife habitats / Tree planting	Plus 1 [another attendee supporting the statement above in relation to wildlife habitats / tree planting]
Community Gardens	Promote community gardens
Allotments	The Council should ensure that demand for allotments is fully met in all towns and villages across the County.
Allotments	The Council should ensure that demand for allotments is fully met in all towns and villages across the County.
Allotments / Community Growing	Community vegetable grow your own patches like they have up the Highlands. More garden allotments with community greenhouses/polytunnels.
Food Growing / Orchards / Greenspace	Pilot local market selling food from community spaces / gardens. Community / schools: Pool resources. Plant more food in public realm – orchards etc – productive food. Check out ‘Edible Bus Stop’
Allotments / Greenspace	Prioritise provision of allotments in each town to increase community food production for local consumption. Switch as much public amenity land as possible to growing wildflowers to keep pollinators alive all summer, rather than traditional council prettifying planting.
Greenspace	Plant more wild flowers etc. everywhere for wildlife, more herbaceous borders less annual planting
Greenspace / Play space	Green Spaces for children to play in Spott (beyond barley fields!)
Use of waste land / Environment	Creating a list of council owned waste land/ buildings and holding a community event for ideas on how to better use them with a focus on environmental issues.
Farming / Environment	Encourage / work with farming communities to have deeper "environmental" borders around fields to minimise run off effects into water courses. Side benefit is increased habitat and potential for link paths between communities providing cycle or walking paths.
Farming / Wildlife	Impose an obligation on farmers to provide access to barns for swallows as most of them aren't doing this voluntarily. Swallows only need an entry point the size of a letterbox and although people complain that they make a mess it's not impossible to clean up after they have gone and this should be accepted as another operating cost.
Greenspace / Allotments	Make green spaces easier to access and stop building on greenfield sites, have wildlife corridors and be more thoughtful to landscaping when building new houses. Allotments and community gardens, growing areas should be part of all building regulations and plans.
Gardening / Biodiversity /	A community forum (online/Facebook or magazine/circular) where people can share ideas about gardening for wildlife and post photos of what they are doing, and get advice about small-scale rewilding projects that can be applied in people's gardens and local community greenspaces.



Greenspace / Education	<p>A competition each year with a financial incentive/other prize for individuals and groups who have rewilded their local patch or created perennial wildflower meadows in community spaces, or created a garden for wildlife at home, or started something to help wildlife e.g. hedgehog-friendly neighbourhoods, bird habitats, bat boxes, wild corners for insects or frogs and toads, etc.</p> <p>Environment to be a major part of school curriculums so that children can engage with nature from early years on as this is their birthright and it is being lost to them.</p> <p>More biodiversity officers at the council. Expand biodiversity into a great big department.</p>
Outdoors / Promotion	Encourage interest in the outdoors – people may then be more inclined to look after their local environment
Access rights to land / Awareness- raising	The council could make it easier for organisations and individuals to access council land through the empowerment act. It should let people know what their rights are in accessing paths and green spaces.
Facilitation / Community initiatives / Joint working / Tree- planting	<p>Bring community groups, businesses and individuals together in different locations to map out ideas.</p> <p>Prizes / accolades / competitions for communities and individuals that can plant trees.</p> <p>Find other community initiatives that have been successful within or outside of East Lothian who are willing to share their stories and support similar initiatives. Create events within East Lothian where communities can hear more about these initiatives.</p> <p>Provide skilled facilitators to facilitate community meetings to enable groups to create local initiatives.</p>
Greenspace / Planting / Education / Schools / Plastics	<p>Work with Blooming Scotland to increase emphasis on sustainable planting.</p> <p>Invest in wildflower seeds rather than cultivated species for greater area of public land and mow twice a year.</p> <p>Education campaign about these changes through local radio, newspapers etc</p> <p>Work with schools to replace single use plastics and require pupils to help recycle, and fund additional dining hall staff as necessary.</p>
Schools / Growing / Tree planting	Support sharing of ideas of good practice in schools. I'm hoping to work with Stoneyhill School [Musselburgh] to fund an indoor growing area e.g. polytunnel / glasshouse, outdoor classroom, tree planting programme of native species.
Project ideas: improving urban realm / Biodiversity /	<p>Reference projects:</p> <p>R Urban: guerrilla gardening; Richard Reynolds; Pimp Your Pavement</p> <p>Assemble and Join: friction fit bird boxes on public realm stuff</p> <p>Public Works: experiments in household knowledge:</p>

Gardening / Food	Food waste projects Biodigester project Use supermarket food waste to make juices / community feasts
Green networks / Food growing	Community orchards / community fruit growing and more shelter belts
Food / Environment	Promote/ensure more plant-based food options in schools and other institutional outlets. Promote awareness and address the effects of local activities eg agricultural run-off, discharge of waste - on water quality and marine wildlife.
Agriculture / Local Employment / Economy	I don't believe that you need to change agricultural policy (although this would be good) in order to bring about effective change to help nature (on farms and elsewhere) and stop climate change.  In response to the two stories in this weeks' <i>East Lothian Courier</i> , I sure do hope that the Council is going to refuse planning permission for that drive-through fast-food place and fossil fuel station at Haddington, and that holiday park/housing estate at Whitekirk. People need jobs but how would they really benefit from the kind of employment that places like those would provide? How would the environment benefit? How about something more creative and fulfilling that respects human dignity, helps nature and saves the environment ?? Please can East Lothian have an economy based on renewables, creative industries, nature conservation etc.
Agriculture / Food	Farming: move away from meat or cereal for meat
Agriculture / Food	Farm livestock accounts for a notable percentage of greenhouse gases. This is exacerbated by the vast areas of cereal land needed for feed. Local produce please, but please ramp up vegan meals on menu and meat only once a week. Ditto Haddock as on 'at risk' list
Greenspace / Food	Promotion of community gardens (or allotments) allow communities to manage some green space to grow veg and teach people the skills to grow their own
Food Growing / Community Gardens	Food Growing Strategy to support more community gardens as well as allotment provision
Food	Healthy vending machines; alternative food / meals / buying produce – i.e. gluten free, dairy free etc.
Food	Reduce meat provision in schools, care homes, etc, especially that derived from ruminants (serious greenhouse gas polluters).
Food	More vegetarian and vegan options at schools and council events
Food	Food - use local food where possible - all part of sustainable procurement. Promote reduction of meat and dairy an increase in plant based foods across the Councils canteens etc. Promoting the health and environmental benefits.
Local Food Growing	Support local growers in having access to farmers markets and more regular local producers/ farmers markets

Food / Reducing food waste	Run cooking classes to help reduce food waste. NB: Already happening in Dunbar – The Ridge runs the Plenty Project cooking classes.
Food / Schools	Reduce carbon impact of its food provision e.g. school dinners (less meat especially beef?).
Schools / Food	School meals: greater proportion of vegan food
Procurement / Food	Prioritise local procurement including food for school meals
ICT / Tree planting	<p>I use Ecosia, which is a non-profit search engine that works just like Google but plants trees with their income.</p> <p>There are stories of people making it the default search engine for organisations - I just read this one: <a href="https://blog.ecosia.org/ecosia-movement/?utm_source=Ecosia+Newsletter+EN&amp;utm_campaign=67829fde62-EMAIL_CAMPAIGN_2018_09_19_11_29&amp;utm_medium=email&amp;utm_term=0_758d663fd6-67829fde62-123816681">https://blog.ecosia.org/ecosia-movement/?utm_source=Ecosia+Newsletter+EN&amp;utm_campaign=67829fde62-EMAIL_CAMPAIGN_2018_09_19_11_29&amp;utm_medium=email&amp;utm_term=0_758d663fd6-67829fde62-123816681</a></p> <p>It struck me that it would be an easy move for East Lothian Council? They are making real change, they have so far planted almost 39 million trees, and individual use does count - I've notched up 788 by using it for a year or two.</p> <p>It would also be great to see a tree-planting movement locally in East Lothian - I'd offer my spade!</p>
Food / Knowledge-sharing	Food growing: Knowledge / skill sharing → inter generational mentorship / guidance
Food / Composting	Encourage people to buy less perfect food – get to compost rather than create food waste
Funding for Community groups / Energy / Composting / Food Growing	<p>Support existing organisations e.g. Sustaining Dunbar to secure an income so they can fund projects. The planning system prevented the installation of a wind turbine and a subsequent healthy income. Visual impact should not be a deal breaker in any future applications.</p> <p>Local Composting projects would be excellent in combination with supporting local food growing. For example a rocket composter could be installed at all schools.</p> <p>Make sure seaweed is used productively for fertiliser e.g. for local growing projects. Stones are an issue but it seems likely that can be overcome.</p>
Recycling / Circular economy / Local	<p>Stop removing recycling bins (e.g. North Berwick East Bay). Household boxes get filled up in a few days by a family.</p> <p>Better to encourage Zero Waste options rather than recycling.</p> <p>Support local dairies to do glass bottle deliveries, help make it affordable for the public.</p> <p>Encourage more Zero Waste shops e.g. new startup called Lil - based in Haddington I think.</p>

economy / Food / Plastics	Would love to have a mobile Zero Waste shop in the absence of a fixed one. Encourage people to eat less meat - could perhaps offer healthy vegetarian, economical cookery classes? Support charities like <a href="http://plasticfreescotland.org">http://plasticfreescotland.org</a>
Recycling	Recycling? Large bins (same as Edinburgh). Also not sure if it's all being recycled?
Recycling	Adopt the public recycling bins (in streets) as seen in Lisbon – paper; plastic; glass; metal
Recycling	Recycle plastic film, crisp packets, shrink wrap etc. to produce alternative products or/and energy
Recycling	Recycle Tetrapac in household bins! Please!!!
Recycling	Consider Bottle Deposit Schemes – works in the Baltics e.g. Estonia
Recycling	Recycling: Many people don't recycle! How do we change this? More info and articles as to why we need to recycle / how important it is. How to get your bins – some people not aware.
Recycling	Recycling simplified in community centres
Recycling	CLEAR and SIMPLE recycling information. Are these boxes really the best we can have?
Recycling	Give more information about what we can and can't recycle (Bottle tops? Black plastic?) and where (batteries)
Recycling	Plus 1 [another attendee supporting the statement above in relation to recycling]
Recycling	Promote recycling/re-use more. Reduce the size of our landfill wheelie bins or empty them less often - this has been shown to increase recycling. Offer information on alternatives to dumping things at the skips, so much could have been given away for re-use.
Recycling	Recycle all of their refuse in their buildings.
Recycling	Wider variety of recycling for home collection.
Recycling	More recycling points - fabric recycling, electrical recycling and raise awareness of what can be recycled.
Recycling	One single recycling bin (like Edinburgh Council) to encourage more people to recycle efficiently.
Recycling	Clarify what is recyclable and can be put into the recycling boxes (each council is different)
Recycling	Make re-cycling simpler, especially for older citizens. Plastics labelling is too complex -and many older people could fit all their rubbish in a single box.
Recycling / Waste	Help us eliminate the use of EPS packaging – North Berwick currently sends to landfill 3 X more of this takeaway packaging than any other East Lothian town. Sustaining North Berwick and Fidra are working on this and we need ELC support.
Waste	Allow more than one brown bin collection to reduce extra individual trips to the tip.
Construction Waste	Reduce construction waste through design and procurement
Beach cleans / Waste	Regular beach cleans are organised by the Council's conservation team. The public should be informed of the amount of waste collected and the main details of what plastic collected – put it in Courier ☺
Fly tipping / Waste	Zero tolerance with fly tipping, if someone is caught make an example and give them a maximum harsh penalty to scare others.

Litter	Support the work of Dunbar Against Litter – educate people not to drop litter in the first place
Recycling / Awareness-raising	Lobby Scottish Government to require all Councils to adopt the same arrangements for recycling so that householders can be aware of how to recycle
Recycling / Waste / Awareness-raising	More of the special bins – 1 is located at east of N.B. [North Berwick]. Lots of people are not convinced that the council efficiently recycle and that our plastic waste just goes into landfill.... Council need to have a campaign informing public how they efficiently recycle and this would lead to more people supporting system ☺
Recycling / Circular Economy	Recycle ‘bins’ that can take old clothes not suitable for charity shops but could (perhaps) be recycled to make what used to be called shoddy cloth. May be way out of date here!!!
Recycling / Circular Economy	Redirect stuff taken to the recycle centre in NB [North Berwick] to the place in Dunbar if stuff is suitable for sale or repair etc. ‘Mixer’
Recycling / Circular economy	Pass office furniture for re-use e.g. via Zero Waste shop
Recycling / Circular economy	Create more Zero Waste stores and initiatives such as the one in Dunbar.
Recycling / Circular economy	Set up a recycle centre where people can swap items eg I once had brand new doors that had never been used (film still on them) and was advised that I must throw them in the skip rather than leave them for someone else to make use of them, as it was Council policy. I do not think policies like this are going to help in our mission to be a circular economy!
Circular economy	Look at projects like zero waste etc to reuse, rather than purchase new items.
Circular economy	Repurposing of office furniture already happens.
Circular economy	Support and encourage communities to set up Repair cafes (circular economy) throughout East Lothian.
Nappies / Circular economy	Encourage the use of cloth nappies with a nappy washing service.

Re-use / Circular economy	Create Repair cafes around East Lothian for people to have items repaired, to reduce the impact of throw away culture.
Tool Share initiative	Create tool share initiatives (and other sharing initiatives of items) so that products aren't always having to be bought (and produced - production of items can have a high carbon footprint).
Community resilience/ resourcefulness / Circular economy / Community Gardening / Housing / Swap shops / Tool share	<p>Make specific / local manual for community resilience/resourcefulness/scavenging for left overs/materials banks...have a pilot self build environment friendly building project that could be used as a resource (could be a house, community space, or even a bus stop or something) ...car lift sharing schemes...local markets and community feasts.. loads of ideas for paths and seat designs etc.. STRIVE community gardens on The Heugh are great – they run a men in sheds, have stone tools, polytunnels, pizza oven and are doing a green wood tee pee project...Blooming Belters also doing a pretty good town centre planting project</p> <p><a href="https://www.publicworksgroup.net/projects/r-urban-wick">https://www.publicworksgroup.net/projects/r-urban-wick</a></p> <p><a href="https://theediblebusstop.org/">https://theediblebusstop.org/</a></p> <p><a href="http://r-urban.net/en/sample-page/">http://r-urban.net/en/sample-page/</a></p> <p><a href="http://guerrillagardening.org/">http://guerrillagardening.org/</a></p> <p><a href="http://www.assembleandjoin.co.uk/">http://www.assembleandjoin.co.uk/</a></p> <p><a href="https://rejuce.co.uk/pages/about">https://rejuce.co.uk/pages/about</a></p> <p>Self build prob lots to add here with a bit more thought...</p> <p>Walter Segal original self build project but they are piloting a self build initiative community in S London at the moment (as well as loads of cohousing projects)</p> <p><a href="https://secmol.org/about/eco-friendly-living/renewable-energy/">https://secmol.org/about/eco-friendly-living/renewable-energy/</a></p> <p><a href="http://www.cat.org.uk/index.html">http://www.cat.org.uk/index.html</a></p> <p>How about some swap shops/tool libraries/libraries of things etc etc...</p> <p><a href="http://gdruk.com/wp-content/uploads/2016/09/2016-Library-of-Things-Launch-12.jpg">http://gdruk.com/wp-content/uploads/2016/09/2016-Library-of-Things-Launch-12.jpg</a></p>
Plastics / Strategy general	Some single use plastic unavoidable – care should be taken not to ‘demonise’ this one part of sustainable procurement and use. Overall strategy much more important.
Strategy general / Plastics	There is a lot of concern about plastic just now - while this could be a useful way in to getting people interested, the strategy should concentrate on the things that make more of a difference.

General / Plastics	There seems to be a fixation just now on single-use plastics. There are so many other aspects of a sustainable future that deserve attention and over which the Council has some control.
Strategy general / Plastics / Council campaign & staff resources	<p>The above are all good ideas. Many could be more ambitious. Look into, support and investigate should be stronger. If the desire is there it is certainly possible to remove single use plastic from schools within six months.</p> <p>Any actions will only be effective when matched by funds and staff resource. There needs to be a team of Sustainability officers to turn the ideas into action. Monitoring and reporting back to the staff and populace is crucial. I concede that given the state of Local Authority funding the ability of ELC to take significant action is limited.</p> <p>However ELC employs large numbers of staff and a campaign targeting its own staff and workplace practices would be excellent.</p> <p>High Profile promotions - articles in ELC newspaper, boards round lamp posts, as used in the campaign to recruit foster parents. We have to approach combating climate change as though we are on a war footing.</p>
Education / Plastics	<p>More widespread education</p> <p>Incentive schemes for not using plastics</p>
Plastics / Sustainability/ Education	Encourage less use of plastics. More use of reusable cups etc. Education is the key!
Plastics	Encourage supermarkets to have plastic free aisles e.g. for vegetables
Plastics	Work toward complete ban on single use plastic - so no need for recycling. Where franchised, this should be mandatory in contract and include crisp packets..
Plastics	<p>Introduce a plastics tax on suppliers</p> <p>Lobby government to put a law against plastic packaging in supermarkets</p>
Plastics	Back to the bio bags in food caddy. It is ridiculous that the 'public' stopped them being used.
Plastics / Water	Single use plastics eliminated altogether with the exception of straws in an easily accessible dispenser for disabled people. Water dispensers only in council owned buildings and schools.
Plastics	- change back to biodegradable compost bin bags instead of plastic.
Plastics	Ban all plastic bags in every shop in East Lothian.
Plastics	Not providing single use plastic cups anywhere and instead promoting people to carry reusable bottles
Plastics / Recycling	Stop forcing people to laminate posters for display in the Bleachingfield [Dunbar] – unlike paper they cannot be recycled

Recycling / Plastics	Make it easier to understand recycling, we must be able to recycle clingfilm, and softer plastics such as plastic bags and wrapping.
Recycling / Plastics	Expand facilities to increase what can be recycled – especially around plastics
Events / Plastics	Work with events / event organisers to reduce reliance on SUP's [single use plastics].
Leisure centres / Plastics / Recycling / Littering / Lettings & bookings	Leisure centres: <ul style="list-style-type: none"> <li>- Reduce single use plastic / non-recyclable containers in cafes / vending machines.</li> <li>- Provide better / more obvious recycling bins.</li> <li>- Inform groups using the facilities that they should recycle / pick up their rubbish in order to be considered for a lease.</li> <li>- (Sometimes Meadowmill playing fields are left in a total mess.)</li> </ul>
Plastics / Business	Circulate information to residents and businesses on alternatives to single use plastic.
Plastics / Recycling / Retailers	Can council work with local retailers to put pressure on to change packaging <u>now</u> ? – even if initially so it is recyclable (lots of products are wrapped in film / plastic that is not recyclable).
Businesses / Events / Co- working / Plastics	Provide businesses and event organisers with information on the alternatives to single use plastics. Many council venues have crockery etc can all venues provide reusable plates, cups etc even if they are hireable?  There are still council owned buildings empty which could be co-working spaces and meeting rooms.  Offer incentives to businesses who offer zero waste alternatives e.g. unpackaged food or implement measures to reduce their use of single use plastic
Incentives / Plastics / Businesses / Events	Identify alternatives such as paper straws/cups and Vegware compostable cutlery. Incentives for businesses/events organisers to use them and/or charges for using single use plastics?  Could a small increase in council tax cover subsidies for switching to paper/compostable cutlery etc?
Schools / Plastics / Food	Support a hub of resources for schools where items could be swapped between schools. Stop the use of little single use plastic tubs for pupils' fruit in lunch halls. Encourage composting of food waste from school lunches. Allow left over food to be given to children who will eat it, rather than binning it.
Schools / Recycling	I travel to all primary schools in East Lothian and am amazed at the difference from school to school regarding recycling.



	<p>Most schools seem to have a real concern about the importance of recycling but I am shocked by the difference I experience from school to school regarding commitment to actually putting ideas in to action: I believe that all school children are offered milk at play time, but how many recycle the cartons?</p> <p>Some staffrooms recycle everything including food for compost, most schools do not.....</p> <p>It seems that each school chooses their level of commitment to recycle with varying degrees of success.</p> <p>I am appalled at the items thrown away without a thought for the environment-plastic bottles, tins etc on a daily basis. I regularly take things out of the bin, wash and recycle them.</p> <p>I'm sure if everybody was reminded, either by email or a team chat to remind them that recycling CAN make a difference to the planet even at a personal level behaviour could change.....</p> <p>There really is no excuse for ignoring the obvious, the planet needs all the help it can get.</p> <p>Global Citizenship training for all EL teachers / or a representative of each EL school to attend</p>
<b>Schools / Litter</b>	Do litter pick days / walks for school activities
<b>Schools / Plastics</b>	Should try and avoid the use of plastic in schools.
<b>Schools / Plastics</b>	Back to paper straws in school.
<b>Recycling / Schools</b>	<p>Recycling facilities for staff to use in ELC buildings (inc. schools).</p> <p>Pool information on recycling from all schools – to improve overall recycling rates (maybe pupil focus groups could do this)</p>
<b>Schools / Recycling</b>	<p>Recycling facilities in all school dining halls.</p> <p>There should be no need to recycle in a dining hall. Glass tumblers, pocilin plates etc. Washable and re usable.</p>
<b>Schools / Awareness-raising / Recycling / Water</b>	<p>School trips to recycling centre / landfill / composting facilities. Where does your rubbish go.</p> <p>Also reservoirs – where does your water come from. Therefore don't pollute your environment (or you'll drink the consequences)</p>
<b>Schools / Sustainability</b>	<p>Continue repeating the messages of sustainability in schools. Kids need to hear it from different people and different perspectives.</p> <p>Until something clicks on a personal level.</p>
<b>Awareness raising / Schools</b>	Hold public engagement activities that are dynamic & exciting & that get the serious message about climate change across to everyone across East Lothian but also allow people to share tips & ideas on what we can all be doing better

	Encourage schools to educate school children about the place that they live & how they can individually take responsibility & make a difference & encourage young people to set up businesses in the area for the area, to help reduce the amount of stuff bought in...encourage a circular economy!
<b>Education</b>	Include education for kids on the environment and waste
<b>Eco Schools</b>	Make the Eco-Schools programme meaningful – not just box ticking
<b>Schools / Education</b>	Support and promote Forest Schools and Learning Through Landscapes initiatives in schools – develop school grounds e.g. outdoor classrooms
<b>Schools / Education</b>	Needs to more primary education on climate change
<b>Schools</b>	Speak to schools and get them involved
<b>Schools</b>	If a school has one bin for rubbish in the staff room, they shouldn't have an Eco School certificate
<b>Schools</b>	Encourage children to bring unpackaged food in lunch boxes
<b>Schools</b>	Engagement with schools: - encourage and educate - low carbon projects - solar panels on school roofs
<b>Bikeability / Schools</b>	Bikeability training should be accessible on ability basis rather than school year group (my kids have been cycling for over 2 years on roads yet are not eligible for this training)
<b>Bikeability</b>	Support Bikeability type programmes for adults throughout the county.
<b>Bikeability</b>	Start Bikeability much earlier to change behaviour / attitudes
<b>Bikeability</b>	Train people so they feel confident on a bike
<b>Bikeability</b>	<u>Bikeability</u> : As well as training school staff it would be great to have support from local cycle groups / Scottish Cycling. Schools now rarely have staff who can give time to running Bikeability.
Project idea: <b>safe cycling</b>	Tues 25/9/18 – Children have been told they will be banned from cycling to school at Stanley Park High in South London if they do not put number plates on their bikes – teachers are introducing the scheme so members of the public can report pupils cycling dangerously.
<b>Water</b>	Water stations in all council buildings – courts, sports centre, education buildings
<b>Water</b> recycling	Ref project India: BECMOL – environmental water recycling project, building project in school, Ladakh (India)
<b>Water</b>	On BBC news website today. Public taps...for refilling water bottles. Community council have been asked about water fountains in the past e.g. at Bleachingfield [Dunbar] but these seem more hygienic

CO2 emissions / Housing / Agriculture / Cement production	<p>In terms of carbon emissions in East Lothian, the initiatives above seem rather superficial. Three of the main sources of CO2 emissions in the county, which are far more important than the issues above, are: household heating, intensive industrial agriculture (20% of Scotland's emissions) and cement manufacturing (Dunbar).</p> <p>The Council should ensure that all council houses and council properties have the highest standards of insulation possible, i.e. close to Passive House standards.</p> <p>The Council should do all it can to support agro-ecological farming which minimises CO2 emissions by minimising animal production, artificial nitrogenous fertilizers and fossil fuel use. This might mean lobbying the Scottish Parliament to structure agricultural grants to promote agro-ecological farming. The Council should also work with SEPA to minimise nitrogenous runoff into rivers and water courses and minimise meat as a component of school and other Council institutional menus.</p> <p>Cement production involves about 1 tonne of CO2 emission per tonne of cement. The Dunbar cement works should be encouraged to convert to geopolymetric cement production which involves 80 - 90% less CO2 emissions than Portland cement.</p>
Strategy general	Make the county Carbon Neutral and Zero Waste – will take time but make that the objective
Strategy general	Normalise discussion of climate action and need to move rapidly to zero carbon East Lothian
Strategy general	Be more proactive and promote initiatives
Strategy general	<p>Within East Lothian:</p> <p>(a) Achieve Paris Agreement of no more than 1.5° above pre ind. [industrial] levels.</p> <p>(b) Achieve 80% reduction in emissions by 2050 as Cl. Ch. Act 2008 [Climate Change Act]</p>
Strategy general	I just wanted to say thank you for consulting us! It's a great thing that the council appreciates the residents' views 😊
Strategy general / all Council	Low carbon and sustainability should be factored in to all planning and infrastructure projects from procurement to capital spend projects. Ensure that Climate Change and low carbon are priorities across all areas of council remit not just in schools and recycling programmes but planning and transport.
General	All of these are vitally important. I am surprised that these actions are not already being taken!
General	Again I am surprised that the majority of these are not already in operation in East Lothian.
Strategy general / Sustainability	<p>The Council has an unrivalled opportunity to become the most 'Sustainable' in Scotland.</p> <p>We should strive to be 'Sustainable East Lothian' - where sustainability underpins everything we do: Sustainable planning, education, housing stocks, business and tourism. We should become Scotland's first plastic-free local authority as well as carbon neutral by setting ambitious carbon reduction targets for council operations, and for the county as a whole.</p> <p>In particular, the council in its buildings and (and that of Enjoy Leisure) has the ability to lead by example, using every building as an exemplar for energy reduction, plastic free, sustainability. It will start conversations about what people can do at home themselves.</p>

	<p>Even by setting the challenge to become Sustainable East Lothian will spark conversations about what that means, what individuals can do to support that. Individual actions were highlighted in the recent IPCC report as a key way to start behaviour change, which then leads to social networks, and on to private and public sector too.</p>
Strategy general / Sustainability	<ul style="list-style-type: none"> <li>• The Council should be more ambitious and far reaching in its approach to climate change in East Lothian and lead a partnership of organisations &amp; communities to deliver Sustainable East Lothian.</li> <li>• The Council should address sustainability across its estate, its spending programmes and its policies.</li> <li>• This issue is urgent and the strategy and early actions should reflect a commitment to rapid change and longer term continued progress. This should include commitments to be plastic free and carbon neutral.</li> </ul> <p>East Lothian is a county rightly proud of its landscape and coastline and all that these provide. Recreation, tourism, high quality food and community wellbeing are all based on a healthy, attractive environment. By environment, we include the earth, water and air – the elements that sustain our communities and associated economies. At present that environment is taken for granted. Globally we are faced with a real challenge to minimise climate change and to plan for the changes we will need to make to our lives to adapt to the changes to our climate that are now inevitable. We therefore welcome the opportunity to input to the Council’s planning for this.</p> <p>This will take radical action of the part of every individual, private or public organisation. The Council has a significant opportunity to become an exemplar of 'Sustainable' in Scotland and to make this our USP. Whilst climate change is a negative impact we have an opportunity to take action to make this strategy deliver positive change for East Lothian.</p> <p>The recent IPCC report into climate change shows that we have a narrow window of opportunity to prevent the worst impact of climate change, but all the actions (in online questionnaire) need to become a priority for that to happen. The council must invest in climate change mitigation on all fronts.</p> <p>We should strive to be 'Sustainable East Lothian' - where sustainability underpins everything we do: Sustainable planning, education, housing stocks, business and tourism. We should become Scotland's first plastic-free local authority and set ambitious carbon reduction targets for council operations, and for the county as a whole.</p> <p>This will also become a marketing point for the council, the USP, with trends showing more people now looking to spend money "with conscience". Nike based its ad campaign around this - it's something big, savvy business is doing and East Lothian should too. More people will want to live, work, holiday and spend money in a county that is leading by example.</p> <p>Better climate change mitigation will also support a more equitable society - better insulation to reduce the need for heating council homes, etc. Cheaper food by selling loose, unpackaged and helping people to eat seasonally and healthily.</p>

	<p>Positive action – the actions that can be undertaken to bring about positive change such as completing the Local Biodiversity Action Plan and implementing the recommendations therein. Building resilience into our natural processes by restoring a healthy environment is a critical part of climate change mitigation eg greater vegetation cover can slow heavy rain waters and minimise flooding down stream.</p> <p>The Council should undertake statutory obligations (e.g. building control) more diligently with regard to all aspects of sustainability. Place making &amp; Planning policy should reflect sustainability goals.</p> <p>All future spending programmes should pass a sustainability audit to ensure that all negative impacts are mitigated and all positive impacts pursued and maximised where possible. Any events that the Council supports should also meet the same sustainability audit requirements, such as demonstrating what actions they are taking towards zero waste (no more bottled water from Poland, or water bottles chucked away during races).</p> <p>Similarly a review of existing spending programmes could be undertaken to see what easy wins might be achieved.</p> <p>What else could the Council do, working in partnership, to assist East Lothian's communities?</p> <p>The Council needs to commit sufficient resources to this matter. Whilst we accept that budgetary pressures make this hard, there has never been more urgency in the need to act to minimise climate change and mitigate its impacts on our environment (and therefore on us). The loss of the post of Local Biodiversity Officer is a significant blow to protecting natural resources.</p> <p>The Council should act as a proactive communicator and sign-poster, or contract another organisation such as LiL CIC, to advocate for existing resources and support (i.e. to those organisations that can locally provide advice, guidance and support/funding for actions such as energy efficiency via Changeworks). Resources already exist to support homeowners in particular but there is no proactive promotion of these. Guidance should be provided to home owners on reducing waste and improving resource efficiency.</p> <p>The continued improvement of superfast broadband to enable more home working and less travel is vital. The development of local 'hot desk ' offices with good facilities would also encourage more local working and support our towns by increased expenditure locally.</p> <p>The Council could roll out Carbon Literacy training to residents, students and businesses. Greater support should be given through business gateway or similar in supporting businesses from the outset to consider their sustainability, to share best practice and inspire action across the County. Running a sustainable business is a course that can be added to the range of business gateway courses provided. Lil would be happy to discuss delivery of this for you.</p>
--	---

	<p>You should build capacity and leadership in communities to foster the delivery of community-led activities that deliver positive climate change outcomes and improve local quality of life. This should include investigating the pathways to assist citizens to adopt more sustainable and healthy food habits, including the potential to reduce meat consumption to sustainable levels. This should in turn provide support for local, low intensity producers who support biodiversity through their farming practices. Eating less meat means savings that can help to pay for better meat. The Council should investigate outside grants to support this, but also make a challenge fund available locally.</p> <p>Greenspaces and street planting have a role in carbon sequestration and local cooling. A forward strategy for these elements within our streetscapes in particular will be valuable. Green and blue infrastructure is important to citizen wellbeing, biodiversity, food security and carbon sequestration. Does East Lothian have a strategy to support the positive management of this resource?</p> <p>All activities seeking licences, permits or permission to take place in East Lothian should be required to cut single use plastic entirely and strongly encouraged to attempt a zero waste activity and demonstrate carbon reduction strategies.</p>
Strategy general / Sustainability	<p>I believe the council should lead on a Sustainable East Lothian, that underpins all that it does. It should create a network for sustainable organisations - green business, charity, not for profits, educational institutions, whoever else is interested - to work collaboratively.</p> <p>The recent IPCC report into climate change shows that we have a narrow window of opportunity to prevent the worst impact of climate change, but all the above actions need to become a priority for that to happen. The council must invest in climate mitigation on all fronts. This will also become a marketing point for the council, with trends showing more people now looking to spend money "with conscience". Nike based its ad campaign around this - it's something big, savvy business is doing and East Lothian should too. More people will want to live, work, holiday and spend money in a county that is leading by example. Better climate change mitigation will also support a more equitable society - better insulation to reduce the need for heating council homes, etc. Cheaper food by selling loose, unpackaged and helping people to eat seasonally and healthily.</p> <p>The council will need to invest in this brighter future. It should also set aside funding to allow for these big changes, be it through additional consultants, grants for individuals and business, etc.</p> <p>Lil can help with strategy, co-ordination right down to cooking lessons. (<a href="http://www.DoLilThings.org">www.DoLilThings.org</a>)</p> <p>*In the above rankings, I believe the Plastic Free Communities Initiative would come under a broader banner of Sustainable East Lothian and doesn't therefore require its own scheme. I do however fully support its aims.</p>
Strategy general / Sustainability	<p>In particular, the council in its buildings and (and that of Enjoy Leisure and other council contractors) has the ability – and moral responsibility – to lead by example and start conversations about what people can do at home themselves. Even by setting the challenge to become Sustainable East Lothian will spark conversations about what that means, what individuals can do to support that.</p>

	<p>Here are some ideas for actions East Lothian Council could take:</p> <ul style="list-style-type: none"> <li>• Single-use plastics: look into alternatives in Council-owned public buildings and venues</li> <li>• Schools: look into alternatives to single-use plastics in schools</li> <li>• Work with Enjoyleisure to reduce single-use plastics in leisure centres</li> </ul> <p>Single use plastics should be phased out in the run up to a ban within all Council owned, operated or contracted premises. Award of the Surfers Against Sewage Plastic Free Communities Initiative would come under a broader banner of Sustainable East Lothian and would be a notable stepping stone for the County with regard to plastics.</p> <p>Schools: recycling facilities in all school dining halls and all other council premises</p> <p>Sustainable procurement: look at what we purchase, the supply-chains and the 'carbon footprint By addressing Council procurement you have an opportunity to to a) address single use plastic but also b) to address other areas of non-renewable resource use and waste minimisation.</p> <p>"Green Travel Plan for Council staff." Yes, and contracted organisations such as Enjoy Leisure.</p> <p>"Support schools to introduce 'Bikeability' training, to teach children to cycle safely on roads" Yes, communities can support this roll out as currently happens in some schools.</p> <p>"Support the 'Eco Schools' programme in East Lothian schools". Yes, but support needs to be active with greater input from other agencies and organisations. A county wide programme could be delivered to support schools and teachers in delivery of this.</p> <p>"Investigate 'carbon off-setting', such as tree planting, where appropriate". Yes, wherever possible. Trees sequester carbon and create shade, providing cooling to the local environment.</p> <p>"Look into the re-use / re-purposing of office furniture." Support existing initiatives through donation – eg zero waste dunbar, wee red upcycles etc to support East Lothian's circular economy.</p> <p>Whilst we welcome the above options, we feel they look at narrow view of sustainability, where we believe the Local Authority has a responsibility to look at all areas of its business and find steps to greater sustainability. As an organisation you should be an exemplar of a sustainable business. This is a challenging proposition but one you should be brave about tackling. It won't happen overnight but if you do not set out with some greater ambition it will not happen at all. We would like to see Sustainable East Lothian as an example to</p>
--	--

	<p>other local authorities of good practice. The level of ambition should be more at the level of 'East Lothian will move its towns to a zero waste and carbon neutral status' and develop a strategy to do so.</p> <p>The Council should focus, in terms of its own estate, on</p> <p>Energy Efficiency</p> <p>Resources &amp; Waste minimisation (including plastics) via sustainable procurement and waste management systems. Work towards more joined up public services to minimise wasted resource and maximise impact</p> <p>Transport – green transport should be promoted throughout the county and the facilities and services required to implement this explored. Council staff should lead by example.</p> <p>Food sources (&amp; food waste) – supporting local food economies, reducing transport distance and intensive food production (and consequent carbon emissions and chemical load on the environment).</p>
General / Various	<p>Common sense needs to be applied, there's no point getting rid of serviceable petrol vehicles just to adopt electric ones. Wasting existing vehicles is not a good thing. You use plastic cutlery in sports centres. Always. They break constantly and are entirely unnecessary. Note that some people require straws, young kids, certain disabilities, so do not get rid of them all, but do not offer them unless the customer requests them. Offer residents grants to insulate their homes, upgrade boilers or install car charging points. Get rid of the ridiculous boxes for recycling, they blow away in the wind and need replaced - how does the environmental impact of creating and replacing lost boxes compare to recycling plastic bottles? Consider the scheduling of services, the bins on our street are collected on two days, one side one day, one the following day. So the huge polluting lorries drive the same street twice instead of once. Let's just consider the bigger picture and use common sense before jumping on big bandwagons.</p>
Impacts / Strategy general / Policies	<p>Look at <u>impact</u>:</p> <p>—&gt; what action has the biggest impact i.e. plastics = low; sustainable procurement = high.</p> <p>—&gt; joining up with South East Scotland local authorities to create a joint commitment to a policy (i.e. sustainable procurement)</p>
Engagement / Awareness-raising	<p>Run competition to design reusable plastic products specific to Tranent i.e. water containers, coffee cups [and advance buying system], alternative containers, shopping bags etc etc.</p>
Promotion / Publicity	<p>Regular newsletter promoting green initiatives maybe in 'Living' – latest electric charging points, what to do, etc.</p>
Promotion / Publicity	<p>East Lothian Works – weekly info bulletin so can have info added in – thoughts and ideas. Mostly young people.</p>



Communications / Meetings	Increase the use of unified communication solutions e.g. Skype to reduce the requirement for staff travelling to meetings within the county. Reducing staff travel time, increase productivity and reduce carbon emissions.
Communications	Redesign and monitor letters such as council tax bills. Far too many are sent and when asked the department says it is because it is automated.
Cost / Budgeting	Not to use this exercise as an excuse to spend large amounts of money implementing them as there are more important demands on the council budgets for essential services.
Awareness-raising	Educate the community
Awareness-raising	More information: e.g. leaflets, booklets, articles in local paper, 20 mph limits.
Awareness-raising / Strategy general	Encourage community members to see the direct relationship between what they choose to do and the outcome(s) for all
Awareness-raising / Strategy general	Help people understand <u>link</u> between increasingly chaotic weather, risk to local area (e.g. high winds, coastal erosion) with climate change
Partnership / Strategy general	Genuine Partnership – not just lip service. Ensure each Council department supports each other and the communities they are supposed to serve.
Community groups	Support existing environmental community groups to move forward in a more sustainable way
Community Resilience	Support communities to develop ‘zero carbon resilient place plans’ using an inclusive process to engage representative group of local people
Community groups	Work with community groups and charities drawing on everyone’s strengths
Share learning	Look for scope to support grassroots groups/initiatives to share learning with people out with East Lothian - encourage a sense of ownership in developments.
Agricultural vehicles / machinery	Ban use of agriculture vehicles/machinery, strimmers, hedge cutters, chainsaws, sit on lawn mowers etc etc etc. This to be enforced on certain days like a Sunday afternoon, time frames in the week like Wednesday 1300-1700.
Golf	Stop the use of golf buggies on all these golf courses unless official medical reasons dictate the golfer needs one.

## How can East Lothian Council, and its local community partners, achieve these ideas?

Category of Response	Consultation Response
Sponsorship	Sponsorship from companies e.g. Tesco - and individuals - and legacies etc.
Area Partnerships	Area Partnerships play a key role in bringing groups together, strengthen these
Public Funding / Awareness-raising	- Actively pursue public funding for cycle and renewable energy infrastructure projects and public transport projects - Hold events to engage the community and promote these initiatives
Communities / Awareness-raising	Change only occurs when communities are on board. Changing the 'mindset' is essential. How to bring about such change? Community education? When communities take ownership of the problems, solutions follow.
Area Partnerships	Use all avenues – Area Partnerships should be able to help drive this forward but <u>only</u> if they are given sufficient resources
Crowd fund / Sponsorship	Crowd fund and sponsorship funding opportunities e.g. for bike schemes, bins
Projects / Students	School project or student dissertation?
Event	Hold a car free event in their town centre
Community Groups	Join the groups already formed and help them
'Do Nation'	Look at 'Do Nation' for easy ideas on how to lessen one's impact
Community Groups	Community Groups are trying! Every event we have organised has been well attended – given positive alternatives people can make better, more sustainable choices (Sustaining North Berwick)
Community Groups	Helping set up community groups / organisations on renewable energy, efficiency saving, handling changes brought on by climate change – local groups / organisations know best what may work locally
Promotion	Home Energy temperature card could be made available in library all the time – a very effective tool
Awareness-raising	Every day, High School children go to Costa and buy smoothies in plastic cups with plastic dome lids and plastic straws → Educate
Funding	Apply for grants from the Climate Challenge Fund

Funding / Incentives	Support needs to follow new policies: incentives e.g. council tax reduction for communities who go plastic free
Campaign / Values	Values: Make East Lothian a place where “we do” – “we recycle”, “we save electricity”, “we walk”, “we bag it and bin it”, “we cycle”
Awareness-raising	Lead by example: - More info on what communities can do, what individuals can do - Info, info, info – why this is so important
Education	Educate, educate and re-educate – Dangers of not preventing C.C. [climate change]
Volunteering	Encourage Volunteering (very difficult to get people applying for volunteering)
Community Councils	Work with community councils to pass ideas round community
Policies	Design Guides
Policies	Procurement Strategies
Awareness-raising / Education	Educate people to not drop litter
Staffing	The council needs to invest in sufficient staff to undertake many of these initiatives
Promotion / Publicity / Awareness-raising	Dedicate the centre pages of ‘Living’ in East Lothian to tips on how we can all reduce our carbon footprint and promoting all Council initiatives
Local issues / Strategy general	Connect to <u>LOCAL</u> issues – people more likely to engage when it is directly linked to them rather than global
Costs / Budget	Trim your head office. Cap or reduce the highest paybands. Use that money rather than removing music tuition.
Strategy general	Take them seriously. Stop dragging your feet and contenting yourself with "mitigation". Because when I look at some of the things the council has allowed in recent years I find it hard to believe that you are genuinely interested in the environment or climate change or biodiversity. You need to put these things first. Don't let this be just another "tick the boxes" initiative. Don't be too confident that we are going to be able to let climate change happen and just take "mitigating action". We need to stop climate change from happening however we can. We need to stop being so proud and recognise that human beings are just one species in the web of life and we share this one precious life with many other creatures. If you have these things in your heart you will not find it too difficult to achieve the suggestions in the questions above.

Strategy general / Promotion	Win hearts and minds as an exemplar authority. Energise local people, stakeholders, charities.
Strategy general / Social Enterprise	<p>As above, the Council needs to lead on a sustainability network of all interested parties to better support climate change mitigation - and to do it in a speedy fashion. The recent IPCC climate change report shows we only have until 2030 to keep climate change to a 1.5 degree increase - otherwise we could lose whole ecosystems. This would also see increases in storminess, floods and adverse weather, which could have a devastating impact on East Lothian's harbours, fishing, agriculture, tourism, hospitality and other industries - not to mention residents.</p> <p>I work with Lil - a social enterprise to support sustainability in East Lothian and we would be keen to support/work with the council and other interested networks &amp; groups.</p>
General	Please see my earlier comments
Signage / Health	I wonder if marking walking routes on signs in terms of average calories used might encourage people to walk more? Or maybe they would be hoping it would be more?
Strategy general / Education	<p>Create a mindset within the council to prioritise the issues and put it at the forefront.</p> <p>Education, education, education!</p>
Assist organisations	Help organisations that support this way of working.
Strategy general / Sustainability	<p>Lead by example. Look to your estate and your procurement. Minimise resources use and waste.</p> <p>The Council needs to lead on a sustainability network of all interested parties to better support climate change mitigation - and to do it in a speedy fashion. The recent IPCC climate change report shows we only have until 2030 to keep climate change to a 1.5 degree increase - otherwise we could lose whole ecosystems. This would also see increases in storminess, floods and adverse weather, which could have a devastating impact on East Lothian's harbours, fishing, agriculture, tourism, hospitality and other industries - not to mention residents.</p> <p>As the Local Authority you are ideally placed to take on a catalytic role in developing those partnerships and delivery mechanisms to drive action by individuals and businesses in the area. Establish an East Lothian Climate Change Partnership with representation from all sectors of our society.</p> <p>Provide information and support for residents, communities and businesses and share best practice to help inspire action across the county. Initially this should be about pulling together existing resources, assessing the gaps and then filling them.</p> <p>Develop a Sustainable East Lothian Web resources – bringing all partners together in a virtual team to work more closely and create a</p>

	<p>one stop shop for businesses and individuals to find relevant local advice and resources. There is much action at a community level that needs to be pulled together. This would also facilitate monitoring and reporting progress internally and externally.</p> <p>Provide information and support for schools and colleges, and share best practice to help inspire action across the county.</p> <p>Across the universities activities embed action on climate change as a core activity:</p> <ul style="list-style-type: none"> <li>- Teaching and student experience – to create carbon literate graduates with strong prospects and routes to employment.</li> <li>- Research – to help create innovative solutions to climate change and track the county’s progress.</li> <li>- Estates and processes – towards becoming leading zero carbon, zero waste, climate resilient organisations</li> </ul> <p>We are Lower Impact Living (LiL) CIC - a social enterprise set up to support sustainability and zero waste living in East Lothian and we would be keen to support/work with the Council and other interested networks &amp; groups. We work with individuals and businesses to support and reward their efforts in sustainability. We are currently looking at county wide initiatives to implement this.</p>
Grants	Grants for sustainable community initiatives
Promotion / Ideas sharing	Invite the communities to meet with the ELC after giving a brief synopsis of their findings in the local newspapers and on local television to share views and ideas for implementing them.
Skill sharing / Learning	Support skill sharing and learning - like the earlier LETS schemes,- in a way that is fit for purpose now and takes advantage of scope to work collaboratively.

Cont./

## Any further comments? (online responses)

Category of Response	Consultation Response
General	Climate change is real and we want to do our bit
General	Sorting out East Lothian will only work if everyone else in the UK and further afield adopts a similar strategy.
General	Really proud to live in a place where climate change and adaptation are being taken seriously! Well done and keep up the hard work!
Libraries / People	<p>Leave the libraries alone. Libraries are the ultimate recyclers.</p> <p>People are the most important asset. They are eco-friendly, capable of being re-used and repurposed infinitely. Invest in them! Libraries, beach car-parks, music tuition - things that are good for people's mental health will keep them full of the energy and ideas and drive you need. They are your most precious resource. Care for them wisely.</p>
General	I have been involved in consultations and unless the points people raise are not taken into account then it's a waste of time. I am not sure why many of the points highlighted are not being implemented already as they are all well known and make sense. There has been nothing on the costs involved on implementation of all these ideas.
General	Please make this your top priority within the council.
General	Overall it's great that ELC is addressing climate change but these questions suggest that the policy options currently being considered are very superficial. Far more radical policies are required to make a significant contribution to addressing the most important challenge facing human life on our planet.
Sports facilities	Investment in gyms and sports facilities is essential as they should be a hub for the communities they serve (especially due to the amount of new housing). They need to be upgraded and be enjoyable places to be as well as providing sports facilities for benefit of the communities.
General	The house building explosion in East Lothian will have put any carbon reduction already in jeopardy.
General	<p>East Lothian Council have a responsibility to lead residents to a more sustainable future to support future generations. Action is needed and it is needed now.</p> <p>Local communities will support a change at this level where they can see real progress and change for the future.</p>
General	<p>The scope for influencing its own staff is considerable. Much of the strategy should be targeting its own estate and practices. Councillors will need to make unpopular decisions for the benefit of us all especially for the future generations.</p> <p>Work with its partners e.g. in Sustran and COSLA to push carbon reduction measures.</p> <p>Reading the latest IPCC report, we have 12 years to take drastic action, this emphasises the need for a tough set of actions in the spotlight. It would be fantastic if East Lothian Council set an example to the rest of Scotland with a comprehensive strategy with the necessary</p>

	resources to implement the targets and monitor these effectively.  The above response is on behalf of East Lothian Greens
General	I am pleased to have the opportunity to be consulted and through this process, learn more about current developments. As my awareness of issues and options increases, I would like to be able to continue to be informed and contribute to discussions.  Run off/risk of flooding (including from rain/precipitation and local drainage systems/tidal back wash; air and sound pollution/increased air traffic; reduction in emissions + encouragement to develop and share produce locally - are all of immediate interest.

Cont./

## What should be the overall VISION for an ‘East Lothian Climate Change Mitigation and Adaptation Strategy’?

Consultation Response
Reduce traffic
Realistic, measurable, sustainable
Reduce inequalities
Involve and give chargeship to communities
Litter free environment
Get communities on board
Carbon Neutral East Lothian
Zero Waste East Lothian
Resourcefulness
Empathy
Capacity building
A high quality environment
Informed and motivated communities who understand the challenges and benefits
Community capacity
Wildlife friendly – biodiverse
More vegetarian and vegan options at council events and in schools
Looking after our future
Working with community
Get the views of young people!
Plastic free zone
Let all areas of East Lothian offer a green, beautiful environment
A place of opportunity for all
Give high priority to getting more local trains
Action towards a greener, healthier and sustainable future
Have AMBITION, be better
Rapid bus transit lanes, public transport, electric buses, more cycle lanes
Working across different groups and agencies to make sure things join up
Community activists = encourage
Environment is for everyone



Ongoing commitment to a changing environment
A thriving low carbon economy
More sharing economy initiatives – car clubs, bike schemes, community tool share etc.
Over 10% of transport budget should be for active travel
High street friendly for pedestrians
Community volunteer projects
Car free town centres, wider footpaths, segregated cycleways
Healthy communities that are prepared for the challenges of climate change
No single use plastic
Urban resilience
Why the focus on mitigation and adaptation? Climate change challenges will be relatively minor here compared to other parts of the world. The focus should surely be on us playing our part in contributing to lower emissions. I would suggest:
'..a place of opportunity for all, with thriving low carbon communities and a prosperous low carbon economy, playing our full part in the national and international efforts to reduce carbon emissions'.
and are helping to reduce the human effects on climate change
I realise that these things need to succinct but suggest that the skills and education bit is missing here. Our communities need access to education and training that supports a low/zero carbon future.
"....providing this isn't bought at enormous cost catered for by reducing people's quality of life in other ways."
Nature at the heart of public policy. Our environment and sustainable living come first. Biodiversity is our treasure and our lifeline.
Interconnected communities (Don't think much will be achieved until Communities themselves function and are better connected)
It says almost nothing, and the words can mean almost anything. What would a high quality environment be? Low greenhouse gas? Pollution-free? Diverse? How does a nuclear power station (alive or dead) fit in? And what does a "healthy" community mean in this context? Free from illness? Active? Thriving? If it actually refers to physical and mental health this strategy seems irrelevant. If not, avoid the ambiguity. And where does employment fit in?
It should be recognised that, by and large, economic growth is incompatible with environmental sustainability. A zero carbon economy would need to be stable which would require radical economic redistribution to avoid perpetuating social inequalities.
We don't have time for "long term". Policies must not be end loaded. ELC needs to urgently review its policies and operations in the light of this week's UN Governmental Panel on Climate Change that takes its cue from the Paris Accord that global warming should be substantially below 2 degrees C above pre industrial levels. The IPCC warns that global warming must be kept to no more than 1.5 degrees C. We are currently heading for plus 2 degrees C that will see millions without

water, mass migration, corals virtually eradicated and overbearing pressure on the Arctic. In East Lothian, we can look forward to high winds intensifying and becoming prevalent, coastal erosion, no go areas for weeks in flood prone towns such as Haddington and Dunbar. in nature insects that are vital for pollination of crops will continue to reduce and unwanted types increase. the sea organisms that sustain fish and birds along our coast will deplete as acidity rises.
<p>This vision needs to be updated and strengthened to reflect that the climate change threats are more immediate than previously thought.</p> <p>We will be Scotland's first plastic free county.</p> <p>We will achieve net zero greenhouse gas emissions by 2050, with interim reduction measures of 56% by 2020 and 77% by 2030.</p> <p>Sustainable East Lothian: will be a place that social equity is supported by ensuring that sustainability underpins every Council action, from our development plans, procurement, across all areas of operation*.</p> <p>*This should extend right down to bags for collecting food waste. These must be biodegradable. Paper at the printers must be recycled. Etc.</p>
It's missing something about residents emissions like domestic and transport? Should it include a target like 'with reducing overall carbon emissions in line with Scottish Government targets'?
<p>This vision needs to be update and strengthened to reflect that climate change is an imminent threat affecting East Lothian and the wider world now.</p> <p>'Sustainable East Lothian will be a place that social equity underpinned by sustainability in every Council action; and by doing so, ensuring the next generation has the resources they need to thrive.</p> <p>We will be Scotland's first plastic free county.</p> <p>We will achieve net zero greenhouse gas emissions by 2050, with interim reduction measures of 56% by 2020 and 77% by 2030.</p>
It's just buzzwords, what will matter is how it's implemented.
With a healthy, diverse wildlife population.
Compulsory purchase of land to produce wind power or solar for small communities should be supported
<p>The vision can only be implemented with the will of the people and for them to see the need for this and a huge reduction in car use.</p> <p>Heavy freight /delivery vehicles have to at the very least vastly reduce their emissions but eventually change to electric.</p> <p>Delivery vehicles to towns cities to be restricted to early morning and late evening unloading and loading and within a very definite time frame or councils will administer fines/penalties.</p>

Cont./

## What is already happening around East Lothian? – groups already underway around the county

Consultation Response
Zero Waste Musselburgh
The Plastics Police, Musselburgh
Musselburgh Active Travel Area Partnership sub-group
STRIVE community garden, The Heugh, Tranent
Preston Seton Gosford 'On The Move' Area Partnership active travel sub-group
'The Beach Cleaners' in Cockenzie & Port Seton, every 2 <sup>nd</sup> Saturday
East Linton Ground Force
Ormiston Grows community growing project
Fa'side Active Travel Area Partnership sub-group
Men's Sheds
Climate Friendly Aberlady
Sustainability group at Aberlady Primary
Junior Rangers
Pishwanton Wood 'Green Building'
Eco – Schools
Individuals who litter pick
East Lothian Path Wardens
Sustrans Volunteers and Greening Scheme
FIDRA (based in North Berwick) – Finding solutions and alternatives to plastics
Cycleforth – working for better provision for cycling in N.B. [North Berwick] Area
Sustaining North Berwick
On The Move NBC [North Berwick Coastal] Area Partnership
North Berwick Coastal 'On The Move' Area Partnership active travel sub-group
Sustaining Dunbar
Dunbar Against Litter
'Plastic-Free Dunbar'
Zero Waste Dunbar
East Linton zero waste/climate change group

**Appendix 2: You Said, We Did...**

Consultation Response	Action Taken / How Used to Influence Final Strategy	Change to Strategy